

FOR SALE LONGBOAT LANDING

Prairie Loop Boulevard & Franklin Avenue,
Fort McMurray, AB



COMMERCIAL AND RESIDENTIAL ZONED LAND

1.23 TO 23.35 ACRES AVAILABLE

CUSHMAN & WAKEFIELD
Edmonton
Suite 2700, TD Tower
10088 - 102 Avenue
Edmonton, AB T5J 2Z1
www.cwedm.com

Brett Killips, B.COMM., CCIM
Partner
780-993-1676
brett.killips@cwedm.com

Gary Killips, B.COMM.
Partner
780-945-1987
gary.killips@cwedm.com

Cody Miner, B.COMM.
Sales Associate
403-877-9431
cody.miner@cwedm.com

Cushman & Wakefield Edmonton is independently owned and operated / A Member of the Cushman & Wakefield Alliance. No warranty or representation express or implied is made to the accuracy or completeness of the information contained herein, and same is submitted subject to errors, omissions, change of price, rental or other conditions, withdrawal without notice, and to any special listing conditions imposed by the property owner(s). As applicable, we make no representation as to the condition of the property for properties in question. JULY 2025

LONGBOAT LANDING



THE OPPORTUNITY

- High exposure corner along Franklin Avenue and Prairie Loop Boulevard
- Exciting development opportunity adjacent to the downtown core
- 2,100 full time & 4,000 part time students at neighbouring Keyano College
- 440 students at Fort McMurray Composite High School
- Nearby retailers include: Walmart, Canadian Tire, Sobeys, Save-On-Foods and The Brick
- Centrally located near approximately 983 hotel rooms



DEMOGRAPHICS



POPULATION

3km	5km
13,495	19,518



HOUSEHOLDS

3km	5km
5,174	7,608



AVERAGE INCOME

1km	3km	5km
\$211,407	\$195,462	\$191,795



VEHICLES PER DAY

35,340 on Franklin Ave
25,000 on Prairie Loop Boulevard

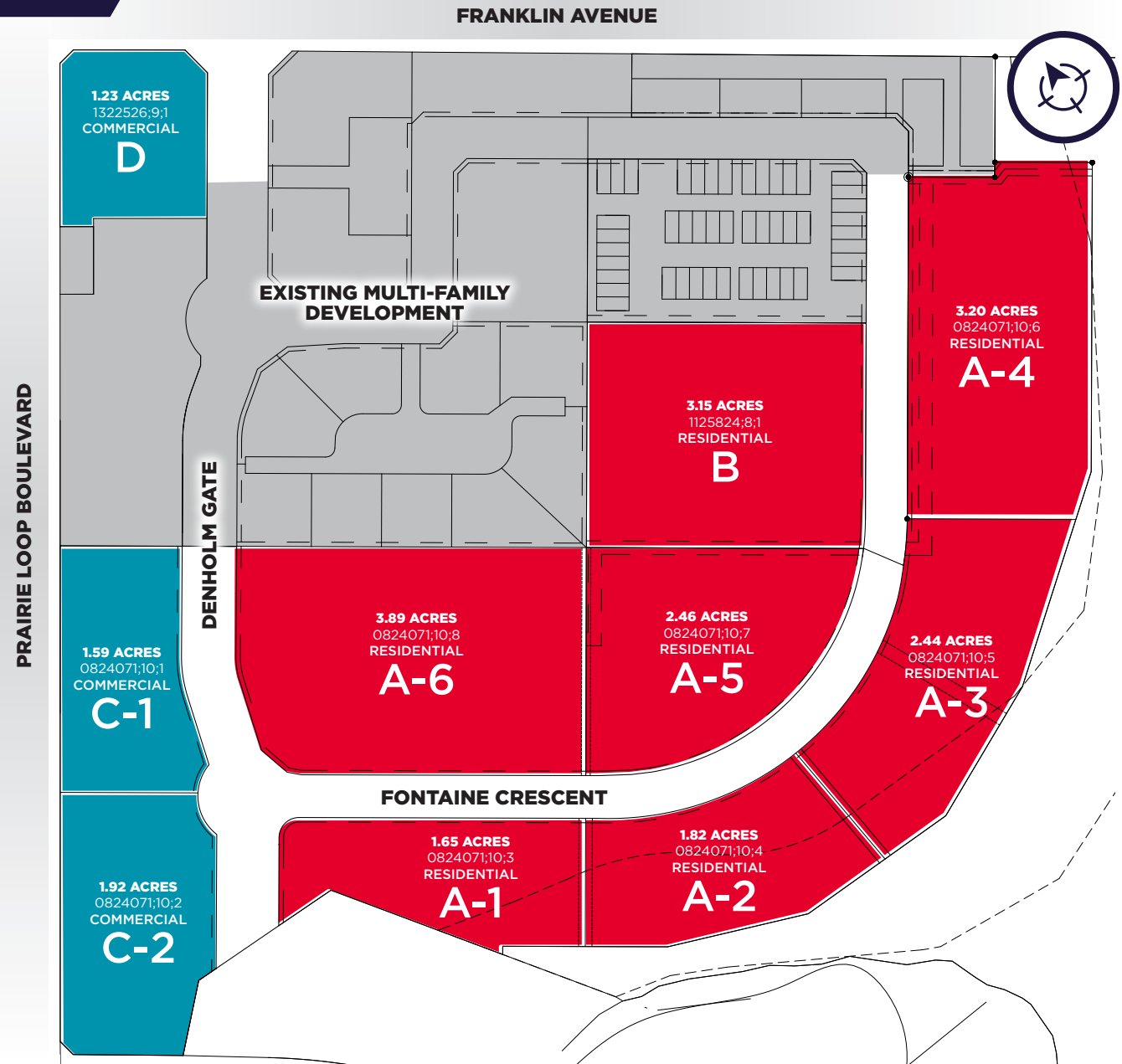
SITE PLAN

PROSPECTIVE SUBDIVISION PLAN

PARCEL	SIZE	ZONING
A	15.46 ACRES	LBL-R4 (Longboat Landing District)
A-1	1.65 ACRES	
A-2	1.82 ACRES	
A-3	2.44 ACRES	
A-4	3.20 ACRES	
A-5	2.46 ACRES	
A-6	3.89 ACRES	
B	3.15 ACRES	LBL-R4 (Longboat Landing District)
C	3.51 ACRES	LBL-C (Longboat Landing Commercial)
C-1	1.59 ACRES	
C-2	1.92 ACRES	
D	1.23 ACRES	LBL-C (Longboat Landing Commercial)

[TO VIEW LBL-R4 SPECS, CLICK HERE](#)

[TO VIEW LBL-C SPECS, CLICK HERE](#)



PROPERTY PHOTOS

PARCELS A & B: 18.61 ACRES (TOTAL SIZE)

ZONING: LBL-R4 (LONGBOAT LANDING DISTRICT)



PROPERTY PHOTOS

PARCEL B: 3.51 ACRES (TOTAL SIZE)

ZONING: LBL-C (LONGBOAT LANDING COMMERCIAL)



PROPERTY PHOTOS

PARCEL C: 1.23 ACRES

ZONING: LBL-C (LONGBOAT LANDING COMMERCIAL)





**CUSHMAN &
WAKEFIELD**
Edmonton

Brett Killips, B.COMM., CCIM
Partner
780-993-1676
brett.killips@cwedm.com

Gary Killips, B.COMM.
Partner
780-945-1987
gary.killips@cwedm.com

Cody Miner, B.COMM.
Sales Associate
403-877-9431
cody.miner@cwedm.com