

FOR LEASE 1,503 SF

WEST WARWICK SHOPPING CENTRE

15159 121 STREET NW, EDMONTON, AB



1,503 SF RETAIL UNIT AVAILABLE IMMEDIATELY!

John Shamey, B.COMM.
Partner
780-887-5646
john.shamey@cwedm.com

Devan Ramage
Associate
780-420-1177
devan.ramage@cwedm.com

Cushman & Wakefield Edmonton is independently owned and operated / A Member of the Cushman & Wakefield Alliance. No warranty or representation, express or implied, is made to the accuracy or completeness of the information contained herein, and same is submitted subject to errors, omissions, change of price, rental or other conditions, withdrawal without notice, and to any special listing conditions imposed by the property owner(s). As applicable, we make no representation as to the condition of the property (or properties) in question. AUGUST 2025

 **CUSHMAN &
WAKEFIELD**
Edmonton

PROPERTY DETAILS

BUILDING SIZE

1,503 SF

LEGAL DESCRIPTION

Lot 13, Block 12, Plan 4886TR

ZONING

CN - Neighborhood
Commercial

BASE RENT

Market

ADDITIONAL RENT

\$15.34 (2025)

PARKING

Ample Surface
Parking

PYLON SIGNAGE

Available

AVAILABLE

Immediately

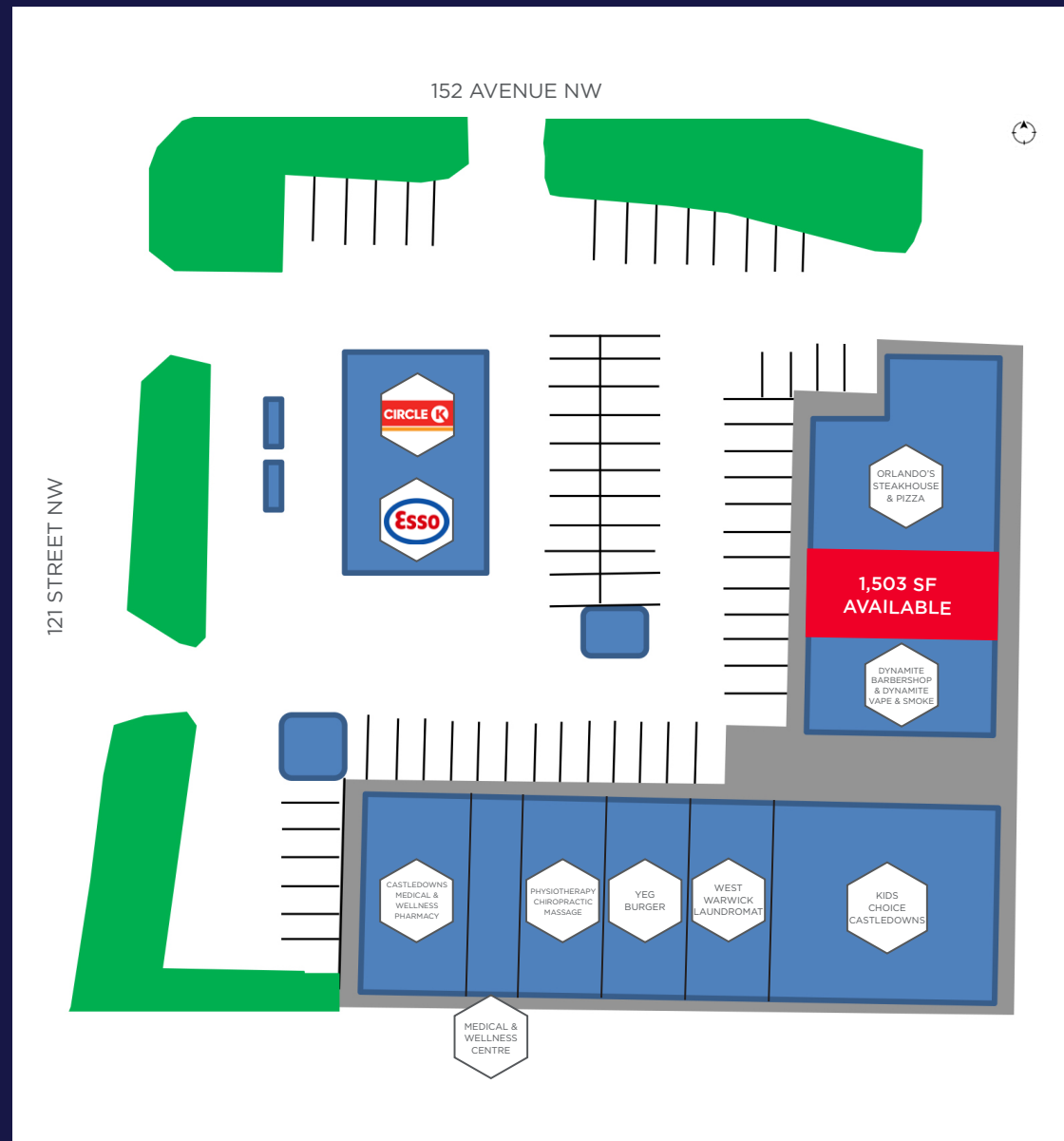


PROPERTY HIGHLIGHTS

- Join Esso/Circle K, YEG Burger, Kids Choice Daycare, Orlando's Steakhouse & Pizza and many more!
- Over 4,140 households within a 1 Km radius
- Strategically located with nearby access to 153rd Avenue
- Average number of vehicles along 121st Avenue is over 4,400
- High exposure signage opportunities available
- CN - Neighborhood Commercial Zoning allows for a wide variety of uses
- Located in close proximity to Katherine Therrien & Caernarvon School



SITE PLAN



DEMOGRAPHICS



POPULATION

1km	3km	5km
9,837	89,700	169,998



HOUSEHOLDS

1km	3km	5km
3,674	31,439	59,345



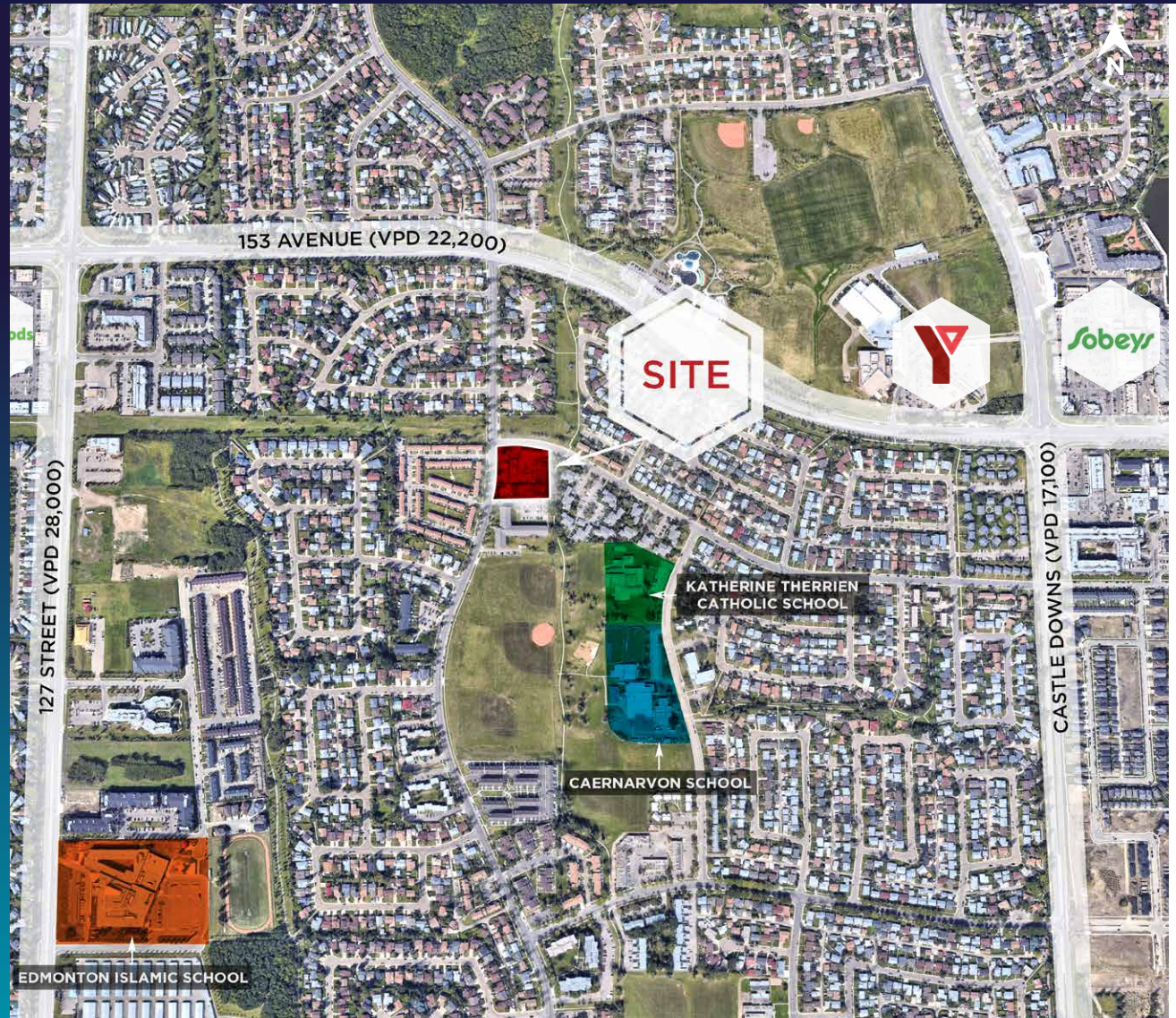
AVERAGE INCOME

1km	3km	5km
\$87,185	\$100,302	\$99,444



VEHICLES PER DAY

4,200 on 121 Street
22,200 on 153 Avenue



John Shamey, B.COMM.
Partner
780-887-5646
john.shamey@cwedmonton.com

Devan Ramage
Associate
780-420-1177
devan.ramage@cwedmonton.com

Cushman & Wakefield Edmonton is independently owned and operated / A Member of the Cushman & Wakefield Alliance. No warranty or representation, express or implied, is made to the accuracy or completeness of the information contained herein, and same is submitted subject to errors, omissions, change of price, rental or other conditions, withdrawal without notice, and to any special listing conditions imposed by the property owner(s). As applicable, we make no representation as to the condition of the property (or properties) in question. AUGUST 2025