

— FOR LEASE —

4703 54 AVENUE

Bonnyville, Alberta



6,400 SF INDUSTRIAL SERVICE SHOP FOR LEASE



Cushman & Wakefield Edmonton is independently owned and operated / A Member of the Cushman & Wakefield Alliance. No warranty or representation, express or implied, is made to the accuracy or completeness of the information contained herein, and same is submitted subject to errors, omissions, change of price, rental or other conditions, withdrawal without notice, and to any special listing conditions imposed by the property owner(s). As applicable, we make no representation as to the condition of the property (or properties) in question. May, 2025

Mark Bowman
Associate
780 702 4256
mark.bowman@cwedm.com

CUSHMAN & WAKEFIELD
Edmonton
Suite 2700, TD Tower
10088 - 102 Avenue
Edmonton, AB T5J 2Z1
www.cwedm.com

PROPERTY HIGHLIGHTS

- \pm 25,000 Sf (0.57 Acres) fenced and graveled yard
- Reception, 3 private offices, 3 washrooms, and kitchenette
- Bonus 1,200 SF storage mezzanine

OVERVIEW

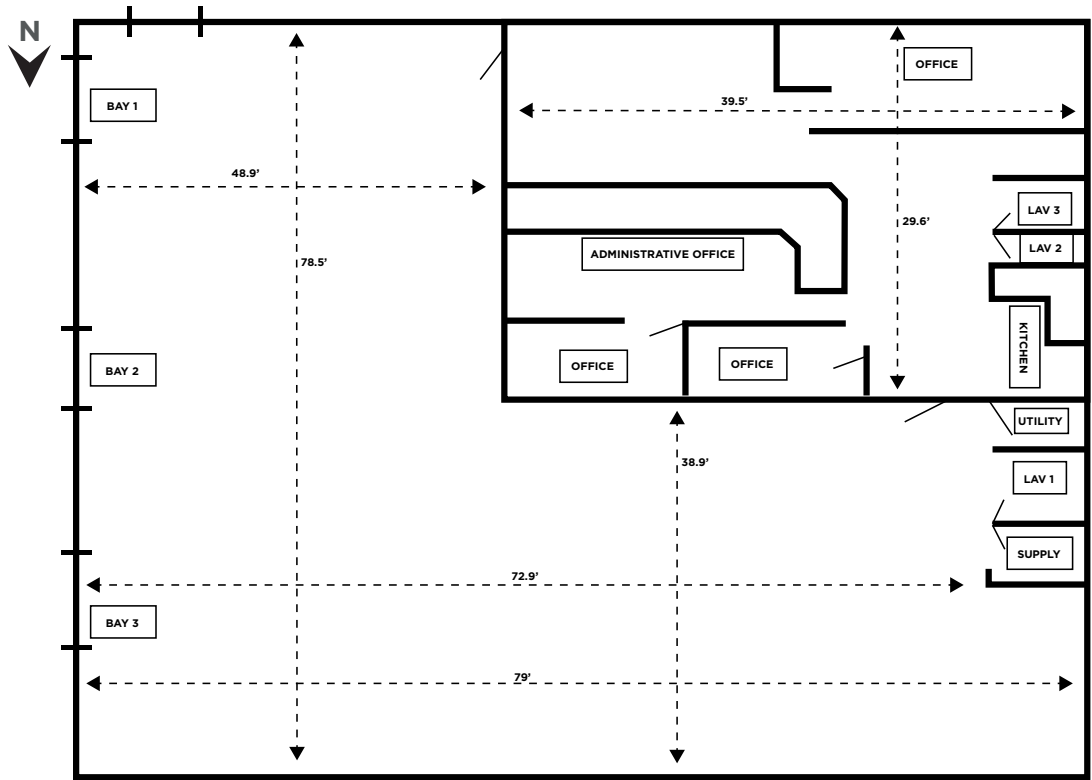


PROPERTY DETAILS

MUNICIPAL ADDRESS	4703 54 Avenue, Bonnyville, Alberta, Unit 101
YEAR BUILT	2012
SITE SIZE	± 25,000 SF (0.57 Acres)
LEASABLE AREA	± 1,200 SF - MAIN FLOOR OFFICE ± 1,200 SF - BONUS MEZZANINE (not included in gross) ± 5,200 SF - WAREHOUSE ± 6,400 SF TOTAL
POWER	200A, 120/480V 3 Phase (to be verified by tenant)
LOADING DOOR	(3) 14'x16' (1) 12'x14' Automatic Grade
HEATING	Forced Air & AC in Offices - Radiant in Shop
CLEAR HEIGHT	18' (bottom of eave) to 20' (top of eave)
DRAINAGE	(3) Trench Drains & (3) Sumps
LEASE RATE	\$11.00 Per SF
OP. COSTS	\$2.25 Per SF (TBC)
AVAILABILITY	Immediately



*Sample Floor Plan. Not drawn to scale - measurements are approximate.



KEEP IN TOUCH



Cushman & Wakefield Edmonton is independently owned and operated / A Member of the Cushman & Wakefield Alliance. No warranty or representation, express or implied, is made to the accuracy or completeness of the information contained herein, and same is submitted subject to errors, omissions, change of price, rental or other conditions, withdrawal without notice, and to any special listing conditions imposed by the property owner(s). As applicable, we make no representation as to the condition of the property (or properties) in question. MAY, 2025.

Mark Bowman
Associate
780 702 4256
mark.bowman@cwedmonton.com

CUSHMAN & WAKEFIELD
Edmonton
Suite 2700, TD Tower
10088 - 102 Avenue
Edmonton, AB T5J 2Z1
www.cwedm.com