

16309 & 16311 132 AVENUE, EDMONTON, AB

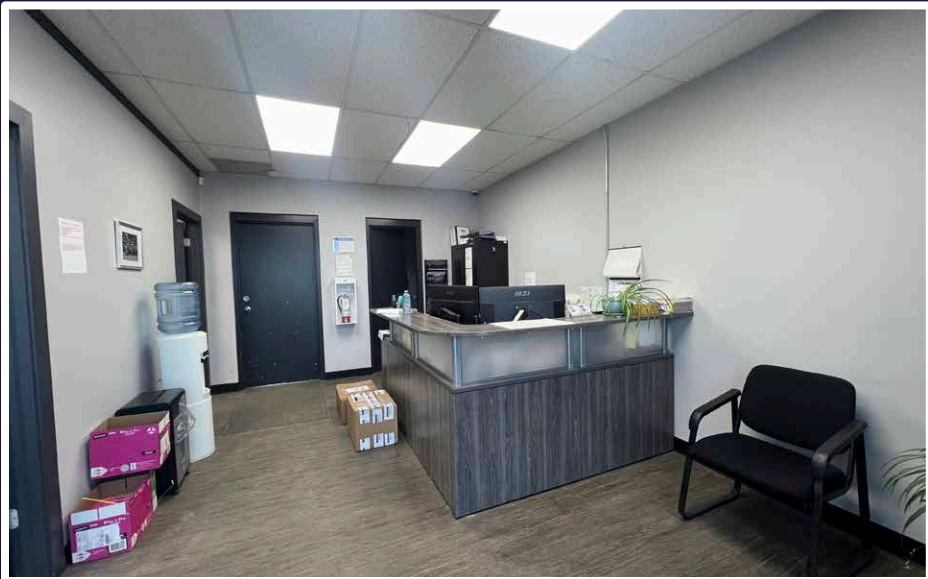
3,600 SF - 7,200 SF INDUSTRIAL WAREHOUSE BAYS WITH YARD STORAGE





PROPERTY HIGHLIGHTS

- Two bays available at 3,600 SF each
- Yard storage
- Excellent proximity to major arterial roads
- Ample Parking



PROPERTY DETAILS

Municipal Address: 16309 & 16311 132 Avenue, Edmonton, AB

Market: Mistatim Industrial

Leasable Area: UNIT 16309

*Can be subleased separately or together for total of 7,200 SF

Main Floor Office: 600 SF

Warehouse: 3,000 SF

Total: 3,600 SF

Loading Door: (1) 12'x14' Grade

*Bonus 600 SF concrete mezzanine with offices

UNIT 16311

Main Floor Office: 600 SF

Warehouse: 3,000 SF

Total: 3,600 SF

Loading Door: (1) 12'x14' Grade

*Bonus 600 SF concrete mezzanine with offices

Power: To be Verified by Tenant

Heating: Forced Air & AC in Offices - Unit Heater in Warehouse

Zoning: IM - Medium Industrial

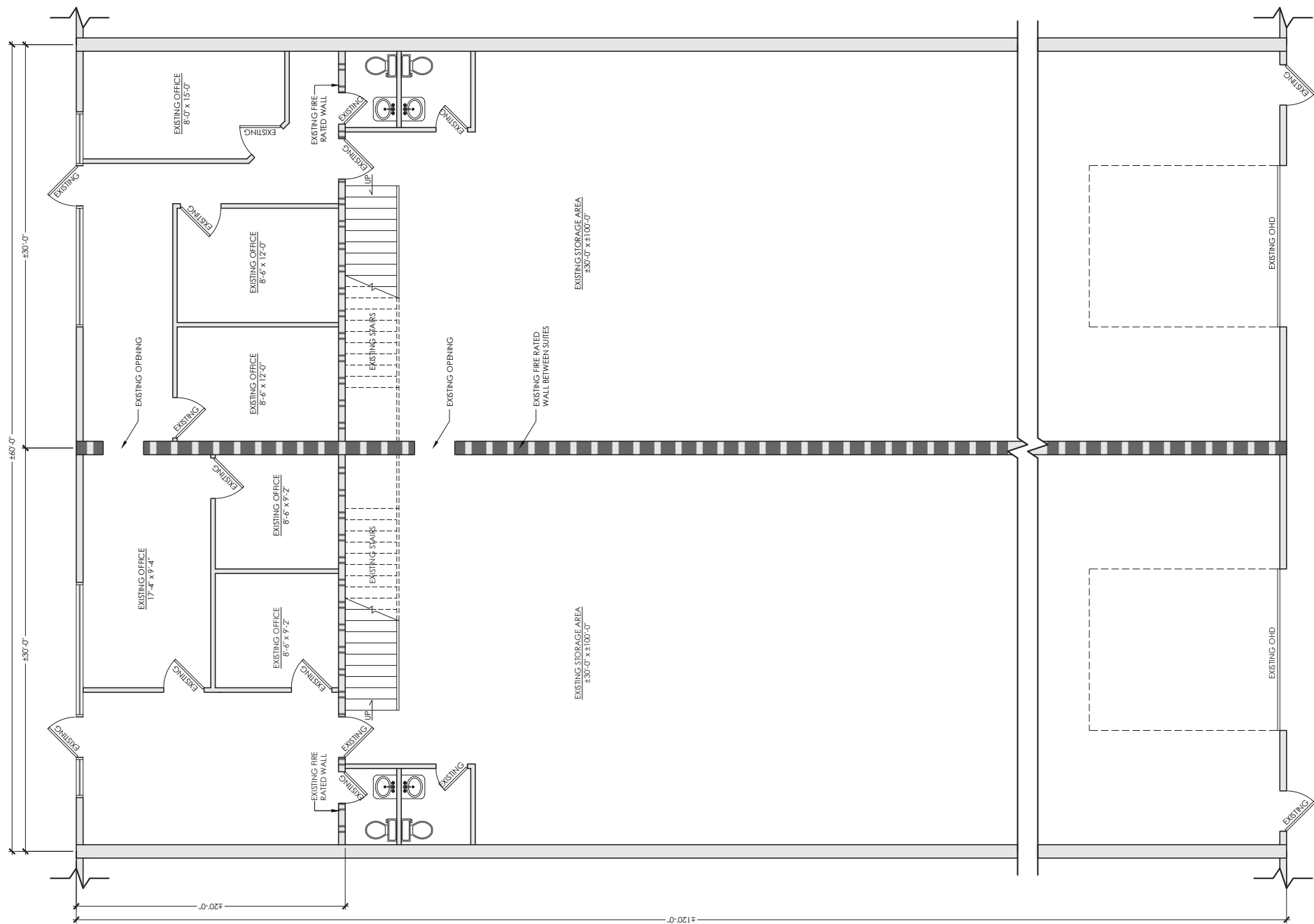
Operating Costs: \$6.08 PSF

Availability: 30 Days

Sublease Rate: \$12.00 PSF

Sublease Expiry: September 30, 2028





KEEP IN TOUCH

