

FOR LEASE

CKDESIGN BUILDING

10524 124 Street
Edmonton, AB



1,500 - 2,000 SF AVAILABLE IMMEDIATELY

PROPERTY HIGHLIGHTS

- Come Join CKDesign and May Restaurant.
- High exposure retail space strategically located along 124th Street.
- 124th Street sees over 17,000 vehicles per day.
- Area businesses and retailers include: Bodega 124 Street, Menya Mori, Destination Doughnuts, Irrational Brewing Company, Listen Records, The Barbell Base, Novelle Bridal Shop, Transcend Coffee, Albert's Family Restaurant and many others!
- Current build out includes: Front counter, ample natural lighting, restroom, optional storage and rear entryway/exit.
- Monthly parking available.

Devan Ramage

Associate
780 702 9479
devan.ramage@cwedm.com

Shane Asbell

Partner
780 917 8346
shane.asbell@cwedm.com

Jacob Dykstra

Senior Associate
780 702 5825
jacob.dykstra@cwedm.com

Scott Vreeland

Associate Partner
780 702 9477
scott.vreeland@cwedm.com

CUSHMAN & WAKEFIELD
Edmonton
Suite 2700, TD Tower
10088 - 102 Avenue
Edmonton, AB T5J 2Z1
www.cwedm.com

PROPERTY DETAILS

Municipal Address: 10524 124 Street
Edmonton, AB

Legal Description: Plan RN22, Block 30, Lot 15

Zoning: (MU) Mixed Use Zoning

Neighbourhood: Westmount

Lease Rate: Market

Additional Rent: \$10.50/SF (2024)

DEMOGRAPHICS



POPULATION		
1km	3km	5km
14,722	86,221	205,315



HOUSEHOLDS		
1km	3km	5km
8,212	44,620	98,856



AVERAGE INCOME		
1km	3km	5km
\$102,869	\$107,658	\$107,279

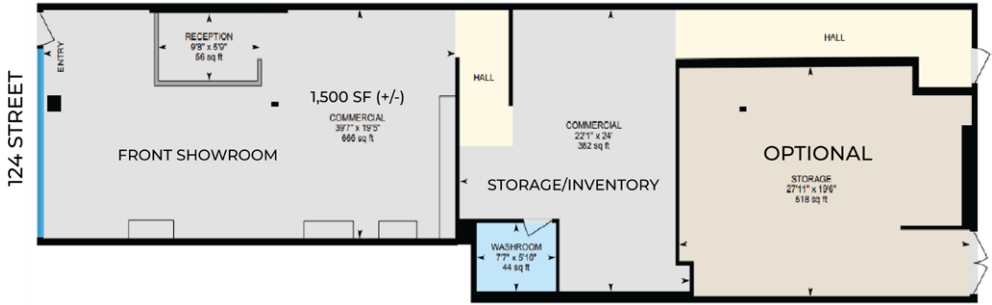
AERIAL



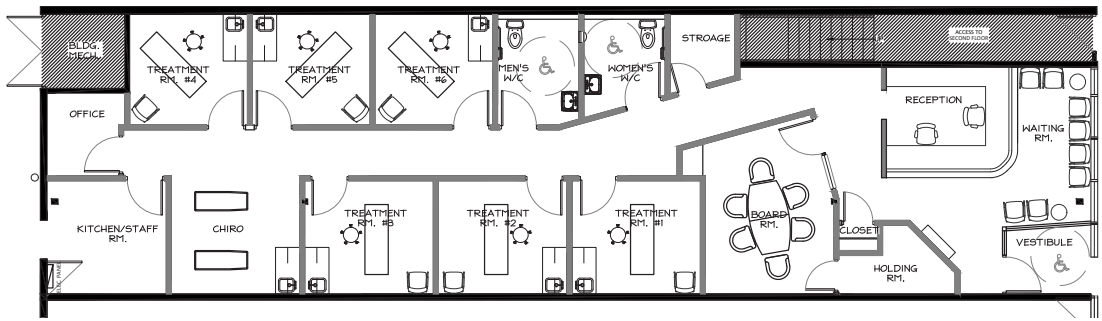
INTERIOR PHOTOS



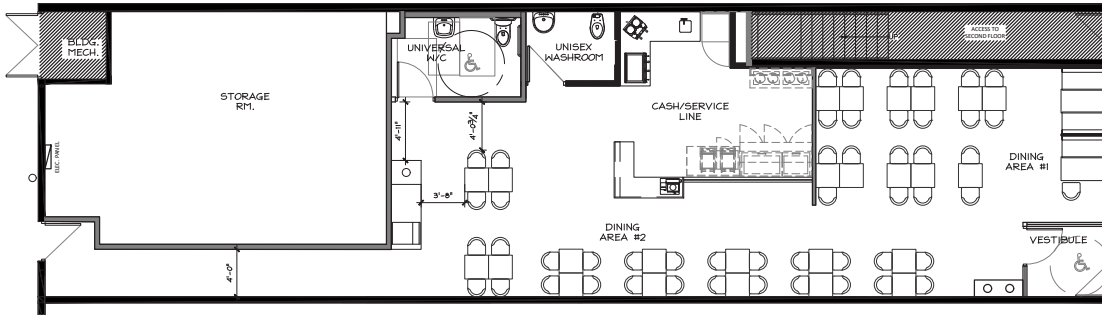
CURRENT FLOOR PLAN



PROPOSED MEDICAL CLINIC FLOOR PLAN



PROPOSED CAFÉ FLOOR PLAN



Devan Ramage
Associate
780 702 9479
devan.ramage@cwedm.com

Shane Asbell
Partner
780 917 8346
shane.asbell@cwedm.com

Jacob Dykstra
Senior Associate
780 702 5825
jacob.dykstra@cwedm.com

Scott Vreeland
Associate Partner
780 702 9477
scott.vreeland@cwedm.com