

FOR LEASE

BONAVENTURE WAREHOUSE BAY

12873 141 Street, Edmonton, AB

BONAVENTURE WAREHOUSE BAY

PROPERTY HIGHLIGHTS

- 3,266 SF warehouse bay
- Reception and private office
- Storage mezzanine

CUSHMAN & WAKEFIELD
Edmonton
Suite 2700, TD Tower
10088 - 102 Avenue
Edmonton, AB T5J 2Z1
www.cwedm.com

Mark Bowman
Associate
780 702 4256
mark.bowman@cwedm.com

Zeshan Qureshi CPA, CA
Partner
780 238 4576
zeshan.qureshi@cwedm.com

PROPERTY DETAILS

Municipal Address: 12873 141 Street,
Edmonton, AB

Leasable Area: 3,266 SF

Power: 120/240 Volt, 3 Phase
(To be confirmed by tenant)

Loading Doors: (1) 12'x14' Grade

Sumps: One Sump/Drain

Clear Height: 18'

Zoning: BE - Business Employment
Zone

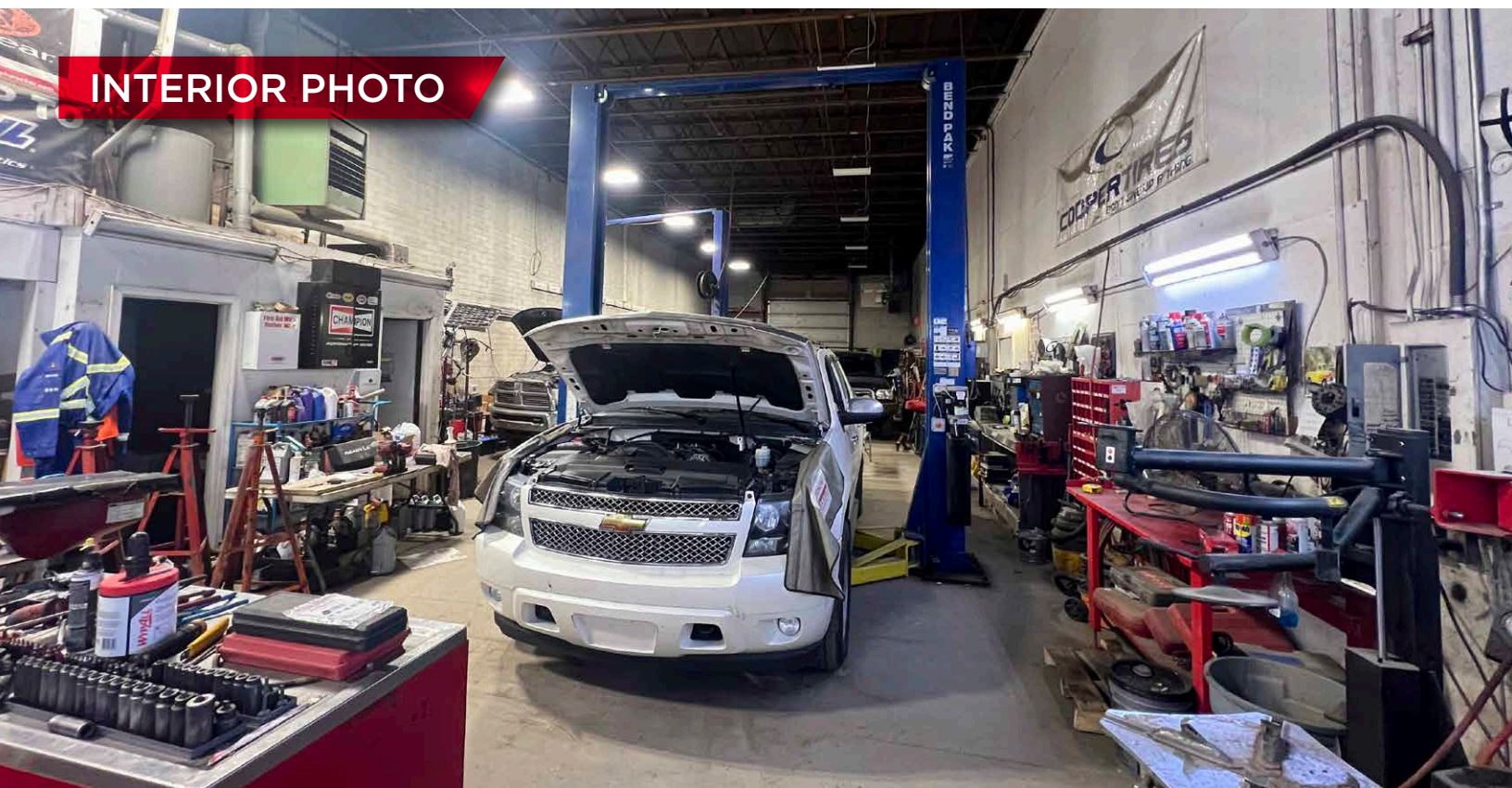
Lease Rate: \$12.00 per SF

Operating Cost: \$3.65 per SF

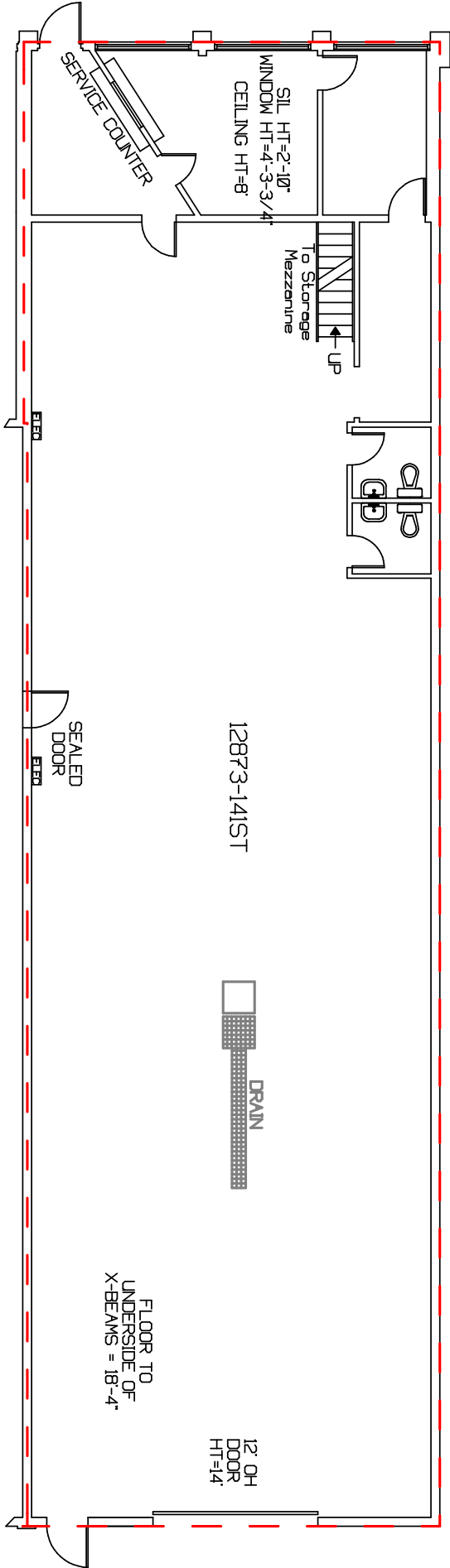
Availability: 30 days



INTERIOR PHOTO



FLOOR PLAN



AERIAL

SITE

ST. ALBERT TRAIL NW

128 AVENUE

YELLOWHEAD HWY



**CUSHMAN &
WAKEFIELD**
Edmonton

Mark Bowman
Associate
780 702 4256
mark.bowman@cwedm.com

Zeshan Qureshi CPA, CA
Partner
780 238 4576
zeshan.qureshi@cwedm.com