

FOR LEASE

**DAYCO
SINGLE BAY**

14559
14457 118 Avenue,
Edmonton, AB

WEST EDMONTON GRADE LOADING BAY

PROPERTY HIGHLIGHTS

- (1) 12 X 12 Front grade loading door
- (2) Washrooms
- Small office/reception area
- Small mezzanine
- Immediate access onto 118 Avenue
- Quick access to 142 Street, 156 Street, 170 Street, Whitemud Drive, Yellowhead & Anthony Henday

Jameson Rebeyka
Associate
780 702 9476
jameson.rebeyka@cwedm.com

CUSHMAN & WAKEFIELD
Edmonton
Suite 2700, TD Tower
10088 - 102 Avenue
Edmonton, AB T5J 2Z1
www.cwedm.com

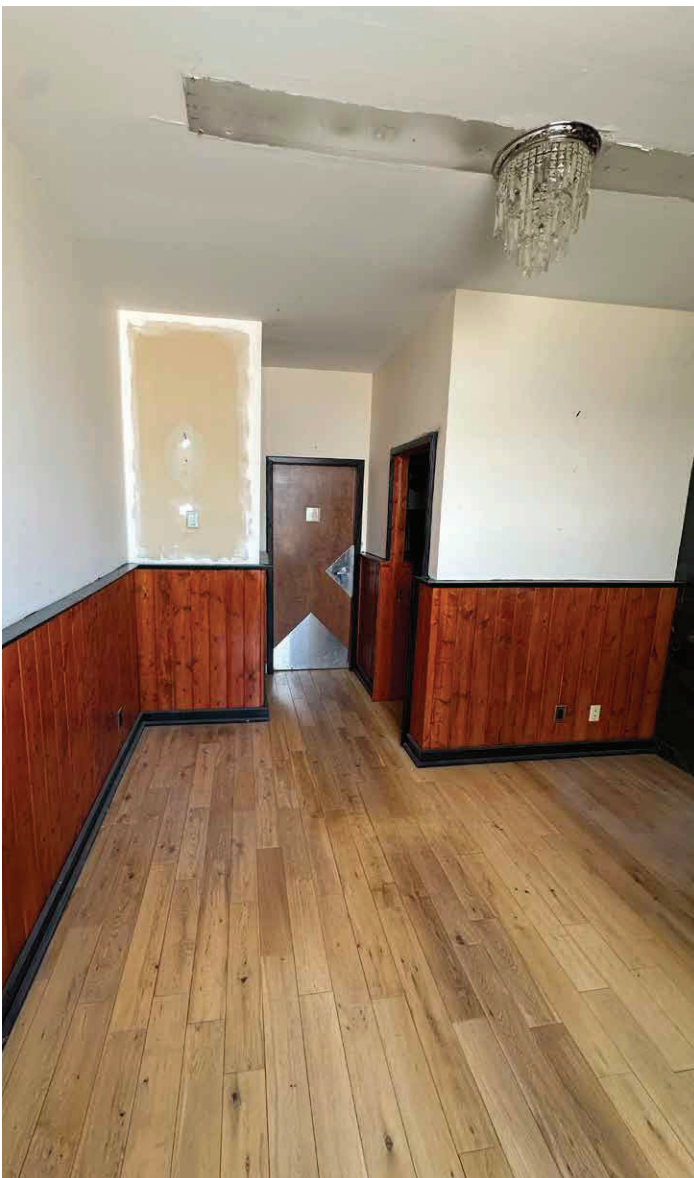
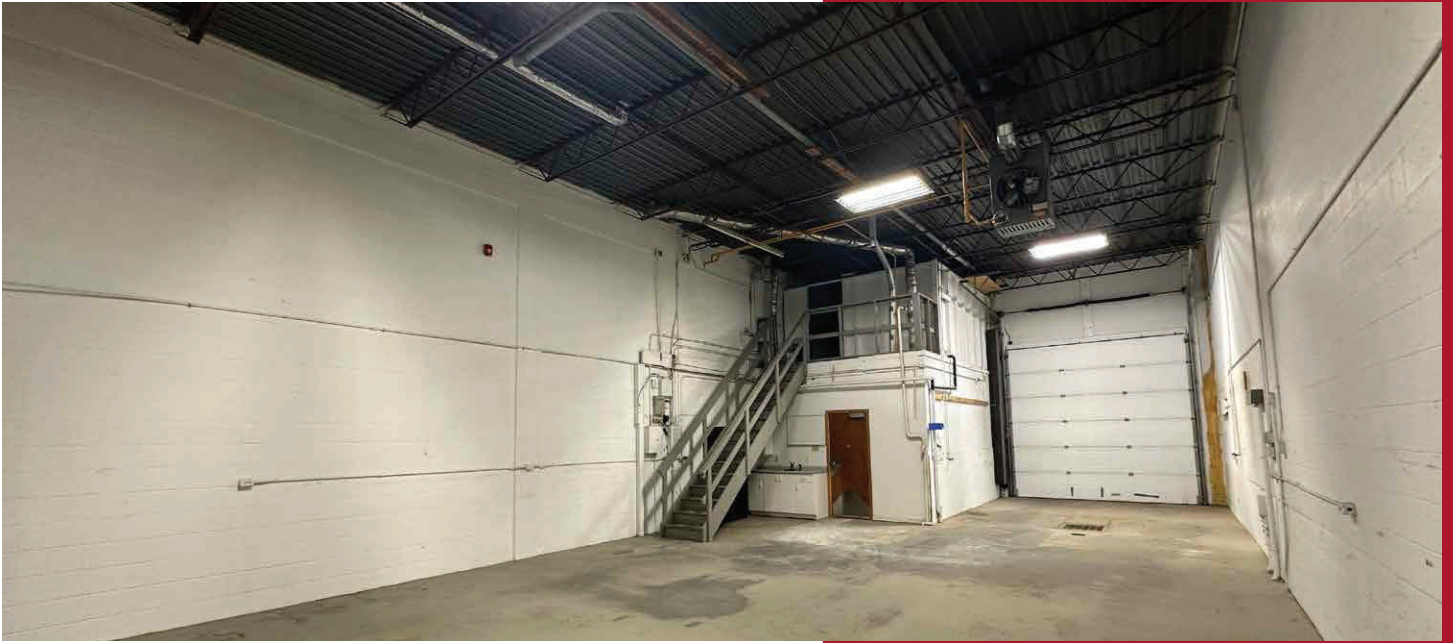
PROPERTY DETAILS

Municipal Address:	14557 118 Avenue, Edmonton, AB	Heating:	Gas Fired OH
Market:	Dominion Industrial	Sumps:	1
Leasable Area:	1,539 SF	Clear Height:	16'
Power:	200 Amp	Lease Rate:	\$11.00 per SF
Loading Doors:	(1) 12' X 12'	Operating Cost:	\$5.98 per SF
Lighting:	T5	Availability:	Immediately

AERIAL



PROPERTY PHOTOS





**CUSHMAN &
WAKEFIELD**
Edmonton

Jameson Rebeyka
Associate
780 702 9476
jameson.rebeyka@cwedm.com