



FOR SALE / LEASE

ACHESON SERVICES FACILITY

45,438 SF ON 20 ACRES

SUPERIOR BUILDING & YARD

25211 114 Avenue,
Acheson AB

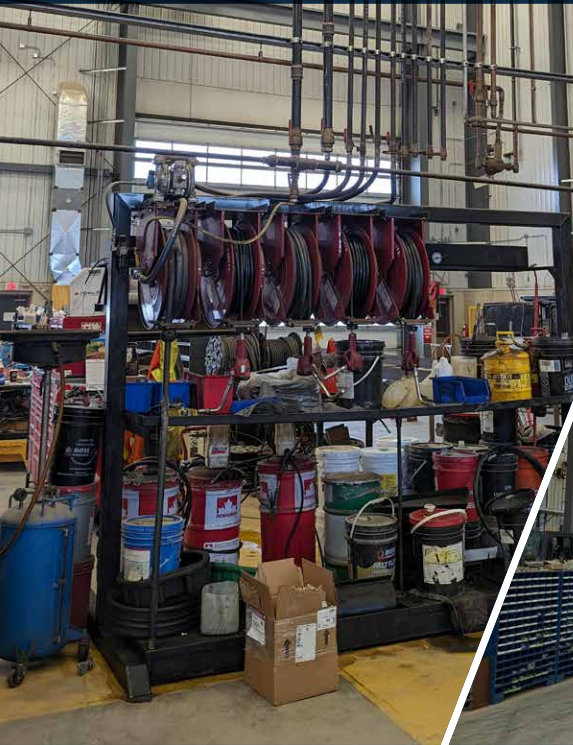
Will Harvie
Associate Partner
780 902 4278
will.harvie@cwedm.com

Max McPeak
Associate
780 700 5038
max.mcpeak@cwedm.com

Kurt Paull, SIOR
Associate Partner
780 702 4258
kurt.paull@cwedm.com

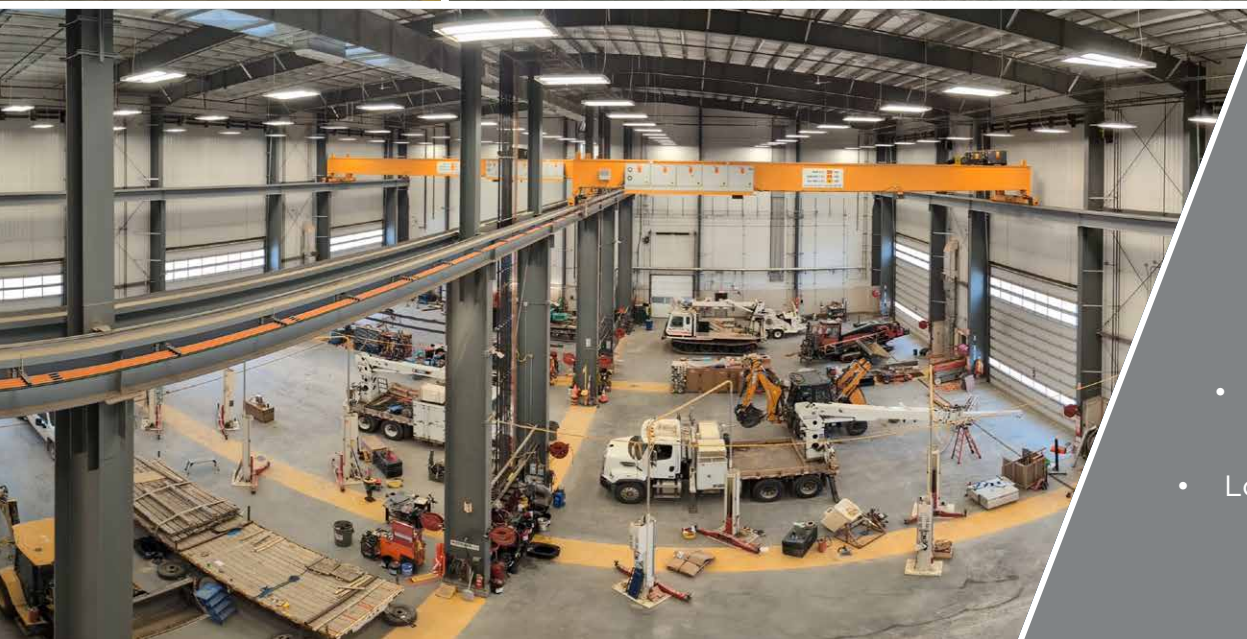
Nick Mytopher
Associate
587 597 5475
nick.mytopher@cwedm.com

PREMIUM SERVICES FACILITY & YARD



PROPERTY HIGHLIGHTS

- Rare large industrial services facility in Acheson
- Designed for heavy equipment service and yard storage
- Main service building built in 2014 with a washbay & warehouse expansion in 2018
- Superior construction with 12" floor slab, in-floor heating, air exchange systems, 25 ton cranes, compressed air stations, central lube stations, trench, locker rooms, and 49' clear height
- Yard is compacted gravel on geo-textile and geo-grid, fenced, and powered.
- Low site coverage of 4.57% with minimal office



PROPERTY DESCRIPTION

Municipal Address:

25211 114 Avenue, Acheson AB

Legal Description:

Plan: 1122011; Block 5; Lot 224

Year Built:

2014/2018

Market:

Acheson, Industrial Zone 2

Site Size:

20 Acres

Site Coverage Ratio:

4.57%

Lighting:

T5 & LED

Heating:

Controlled by BMS (Building Management System) remote monitoring and energy management
In-floor heating & radiant

Sumps:

Two stage compartment sumps with holding tanks

Cranes:

(2) 25 ton with auxiliary 5 ton
(38' under hook)

Make Up Air System:

Air exchange units

Loading (grade):

Six 24' x 29'
Five 18' x 18'
Two 12' x 12'

Yard:

Compacted gravel on geo-textile and geo-grid

Washbay:

142'6" x 50' with 22' clear with catwalks & drive through

Service Bays:

142'6" x 147'9' with 49' clear with 3 drive through service bays, 2 central lube stations, 12 air compression stations, cranes, and trenches

Parts Bay:

142'6" x 41'10" with 14' clear, 4 offices, & washrooms

Storage Bay:

142'6" x 50' with 22' clear

Operating Cost:

TBC - Property taxes & Insurance

Taxes:

TBC - Vendor in the process of sub-division

Availability:

90 days

Building Size:

Warehouse/Service Bays: 39,824 SF

Second Floor Office: 5,596 SF

Leasable Area: 45,438 SF

3rd floor Mechanical/

Storage: 5,596 SF

LEASE RATE:
\$24.00 per SF

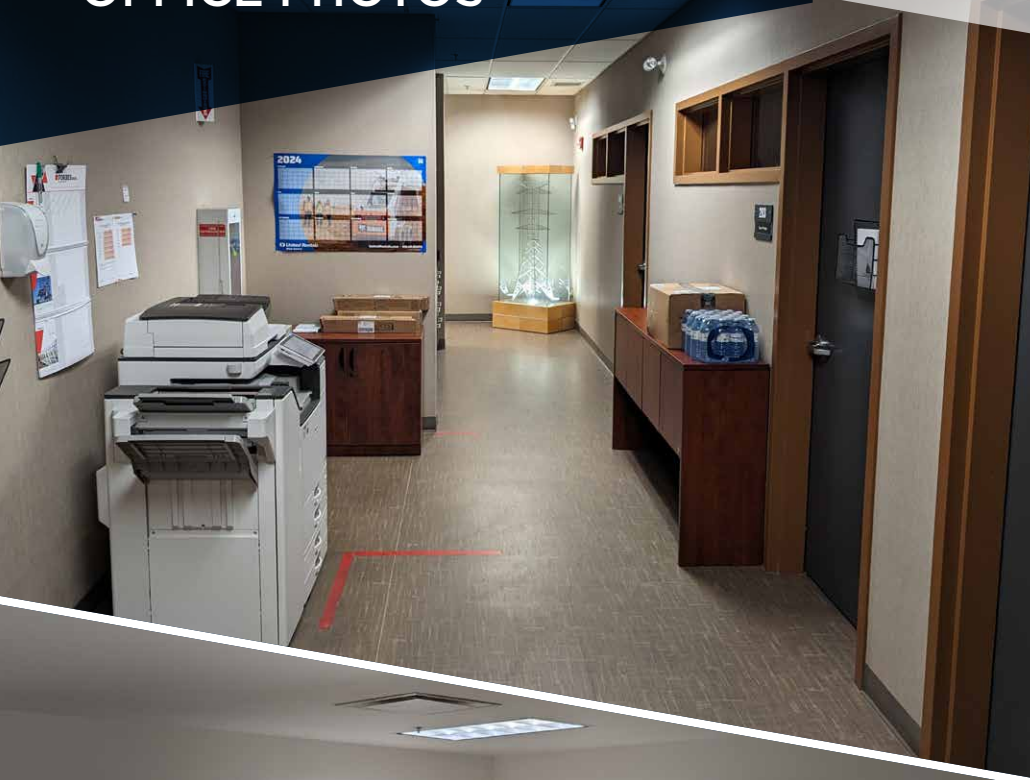
SALE PRICE:
\$18,750,000



PROPERTY
PHOTOS



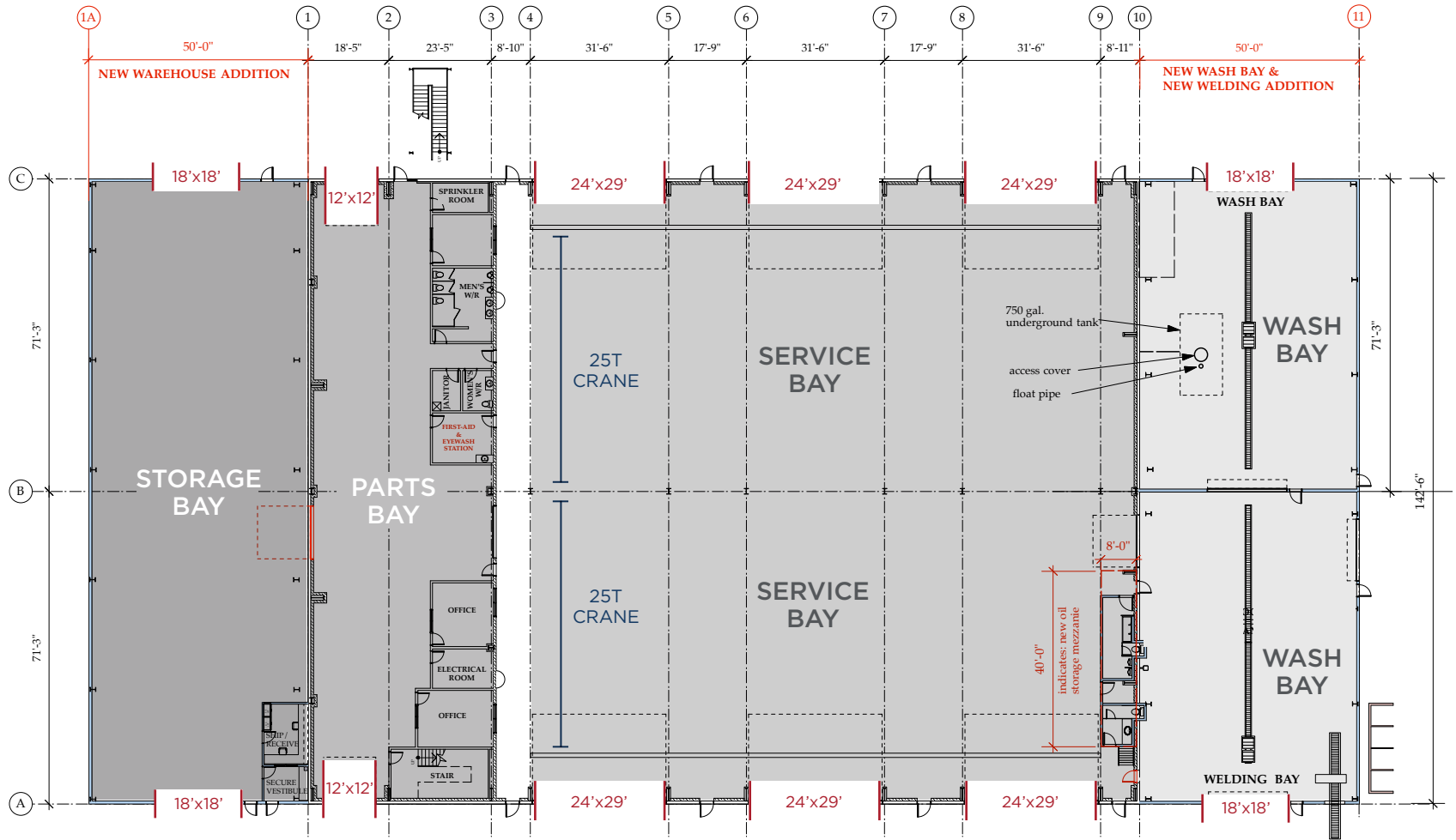
2ND FLOOR OFFICE PHOTOS



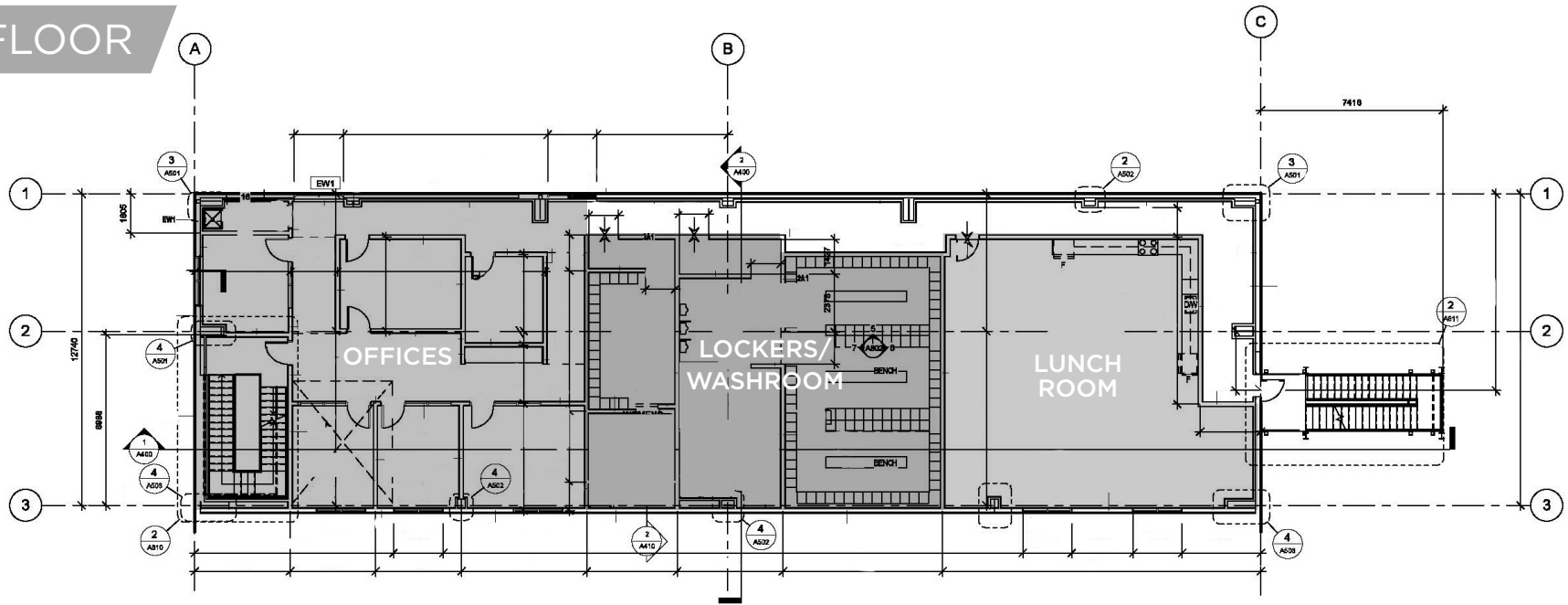
FLOOR PLANS

MAIN FLOOR

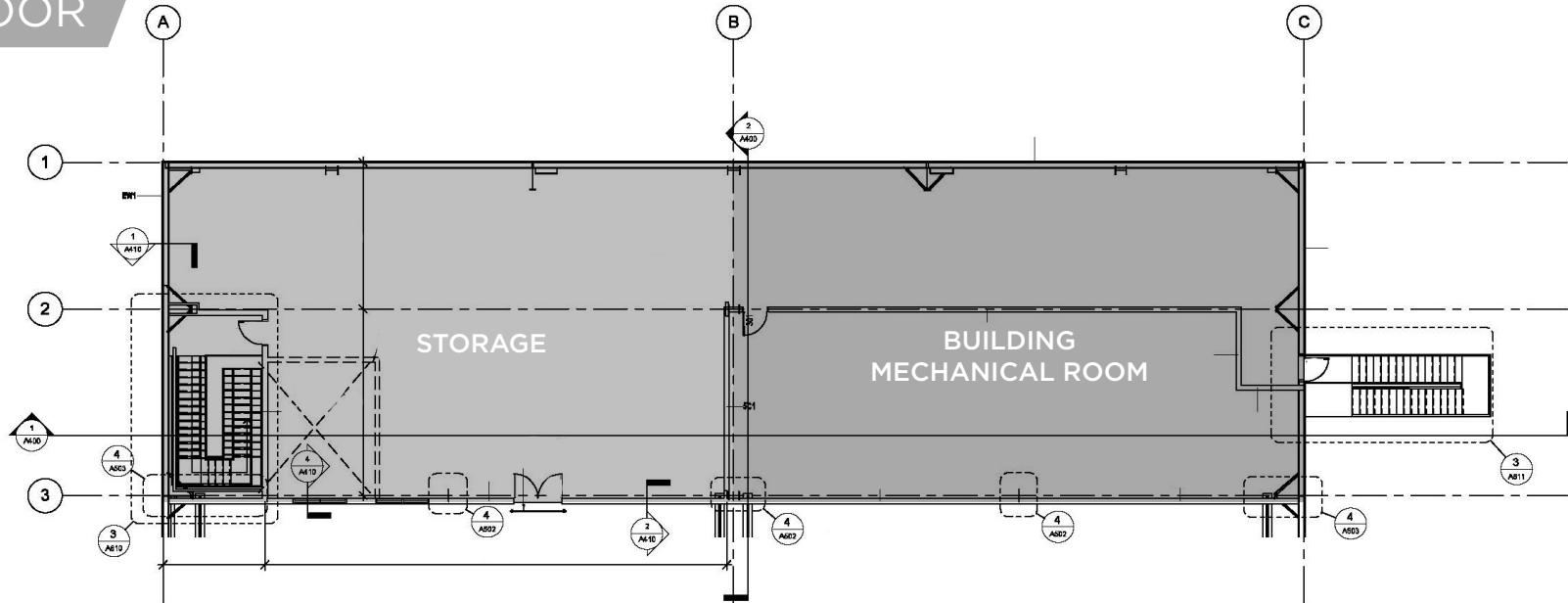
Service Bay, Wash Bay,
Parts & Storage



2ND FLOOR



3RD FLOOR



AERIAL



SITE

YELLOWHEAD TRAIL (HIGHWAY 16)

114 AVENUE

HIGHWAY 60



Cushman & Wakefield Edmonton
Suite 2700, TD Tower
10088 102 Avenue
Edmonton, AB T5J 2Z1
cwedm.com

Will Harvie
Associate Partner
780 902 4278
will.harvie@cwedm.com

Kurt Paull, SIOR
Associate Partner
780 702 4258
kurt.paull@cwedm.com

Max McPeak
Associate
780 700 5038
max.mcpeak@cwedm.com

Nick Mytopher
Associate
587 597 5475
nick.mytopher@cwedm.com

Cushman & Wakefield Edmonton is independently owned and operated / A Member of the Cushman & Wakefield Alliance. No warranty or representation express or implied is made to the accuracy or completeness of the information contained herein, and same is submitted subject to errors, omissions, change of price, rental or other conditions, withdrawal without notice, and to any special listing conditions imposed by the property owner(s). As applicable, we make no representation as to the condition of the property for properties in question. June 05, 2024.