

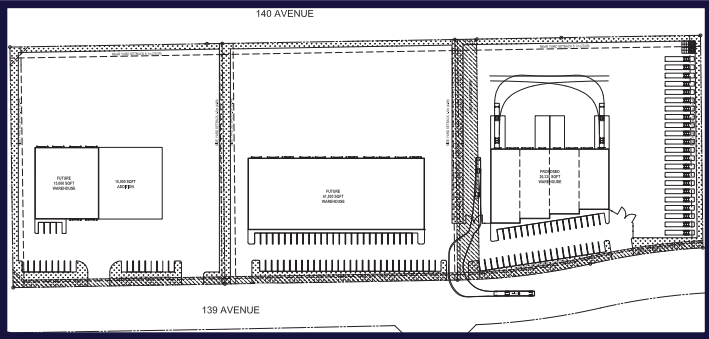
# TRADER RIDGE BUSINESS PARK

Northwest Corner of 132 Avenue & 100 Street, Grande Prairie, AB

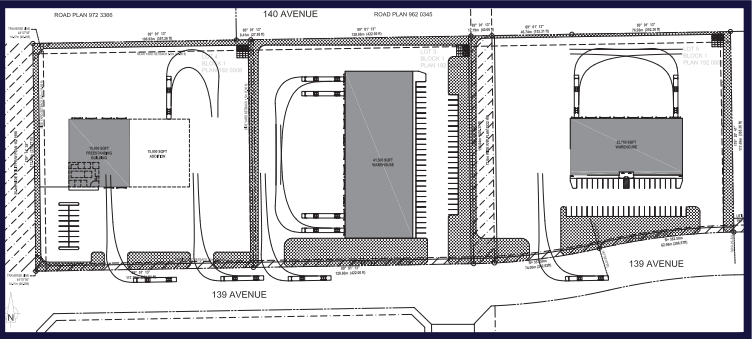


# SITE PLAN

CONCEPTUAL PLAN A



CONCEPTUAL PLAN B



# PROPERTY HIGHLIGHTS

## ADDRESS

Northwest Corner of 132 Avenue &  
100 Street, Grande Prairie

## ZONING

CA - Arterial Commercial

## SERVICING

Fully Serviced

## COMMENTS

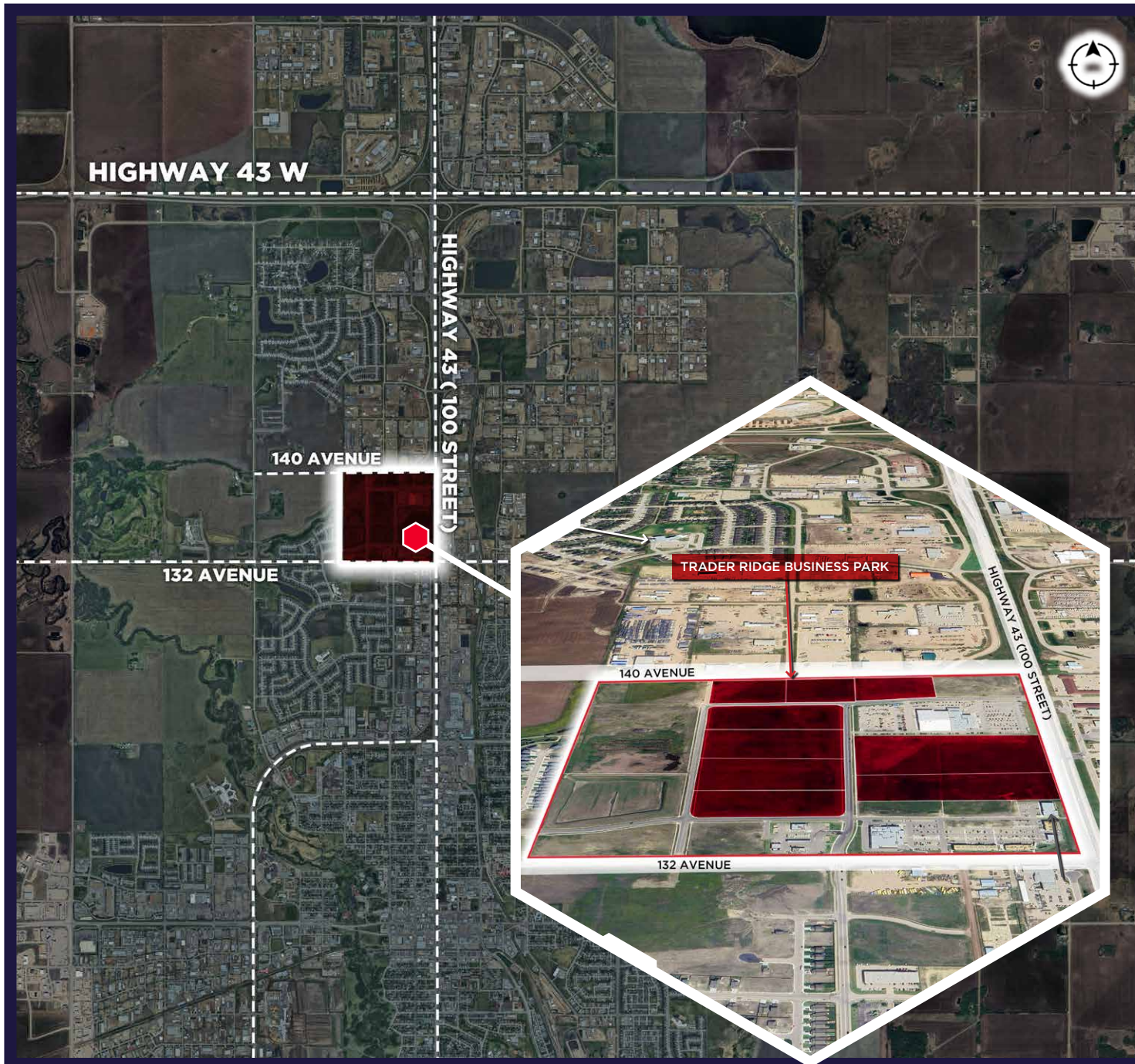
- Prime location with easy access to HWY 43 Located in the heart of North Grande Prairie expanding residential and commercial districts.
- Business Park with sidewalks, street lights, curbs, and paved roads.
- Close to the shoppes of Trader Ridge retail tenants which include Starbucks, Popeye's Chicken, Bone & Biscuit, Panago Pizza, Edo, Prairie Kebab, West Grande Prairie Dental, Thai Express, and Lux Nails!



# LOT PRICING

PHASE	LOT #	ACRES	PRICE PER ACRE
Block 1 (Future Phase)	Lot 5	-	Contact Agent
Block 2	Lot 1	7.22 Acres	Contact Agent
Block 2	Lot 2	6.65 Acres	Contact Agent
Block 2	Lot 3	6.65 Acres	Contact Agent
Block 2	Lot 4	6.82 Acres	Contact Agent
Block 3	Lot 2	12.82 Acres	Contact Agent
Block 3	Lot 5	14.41 Acres	Contact Agent
Block 5	Lot 2	4.65 Acres	Contact Agent

# LAND FOR SALE/LEASE



**Jeff Drouin Deslauriers, SIOR®**  
Associate Partner  
587-338-5333  
[jeff.deslauriers@cwedmonton.com](mailto:jeff.deslauriers@cwedmonton.com)

**Jeff McCammon, CCIM**  
Senior Associate  
780 445 0026  
[jeff.mccammon@cwedmonton.com](mailto:jeff.mccammon@cwedmonton.com)

**Doug Bauer**  
Senior Associate  
780 991 6456  
[doug.bauer@cwedmonton.com](mailto:doug.bauer@cwedmonton.com)

Cushman & Wakefield Edmonton is independently owned and operated / A Member of the Cushman & Wakefield Alliance. No warranty or representation, express or implied, is made to the accuracy or completeness of the information contained herein, and same is submitted subject to errors, omissions, change of price, rental or other conditions, withdrawal without notice, and to any special listing conditions imposed by the property owner(s). As applicable, we make no representation as to the condition of the property (or properties) in question.  
DECEMBER, 2025