

DELTA 58
HELICOPTERS

**+/- 2.0
ACRES**

MR. CONTAINER

FOR LEASE PRONORTH INDUSTRIAL LAND

7 Kuryluk Boulevard
(26004 Township Road 544),
Sturgeon County, AB

RANGE ROAD 260

KURLYUK BLVD

TOWNSHIP ROAD 544

+/- 2 ACRES PARTIALLY GRAVELLED YARD FOR LEASE

PROPERTY HIGHLIGHTS

- Land available for lease in ProNorth Industrial Park
- Fenced yard negotiable
- Flexible Terms
- Ideal for tenants looking for excess trailer parking, storage or laydown yard
- Conveniently located 10 minutes northwest of St. Albert with excellent access to Hwy. 633 and Hwy. 2
- Join neighbors Mr. Container & Delta Helicopters

Chris Van Den Biggelaar
Associate Partner
[780 701 3287](tel:7807013287)
chris.biggelaar@cwedm.com

Doug Greschuk
Partner
[780 722 4344](tel:7807224344)
doug.greschuk@cwedm.com

CUSHMAN & WAKEFIELD
Edmonton
Suite 2700, TD Tower
10088 - 102 Avenue
Edmonton, AB T5J 2Z1
www.cwedm.com

PROPERTY DETAILS

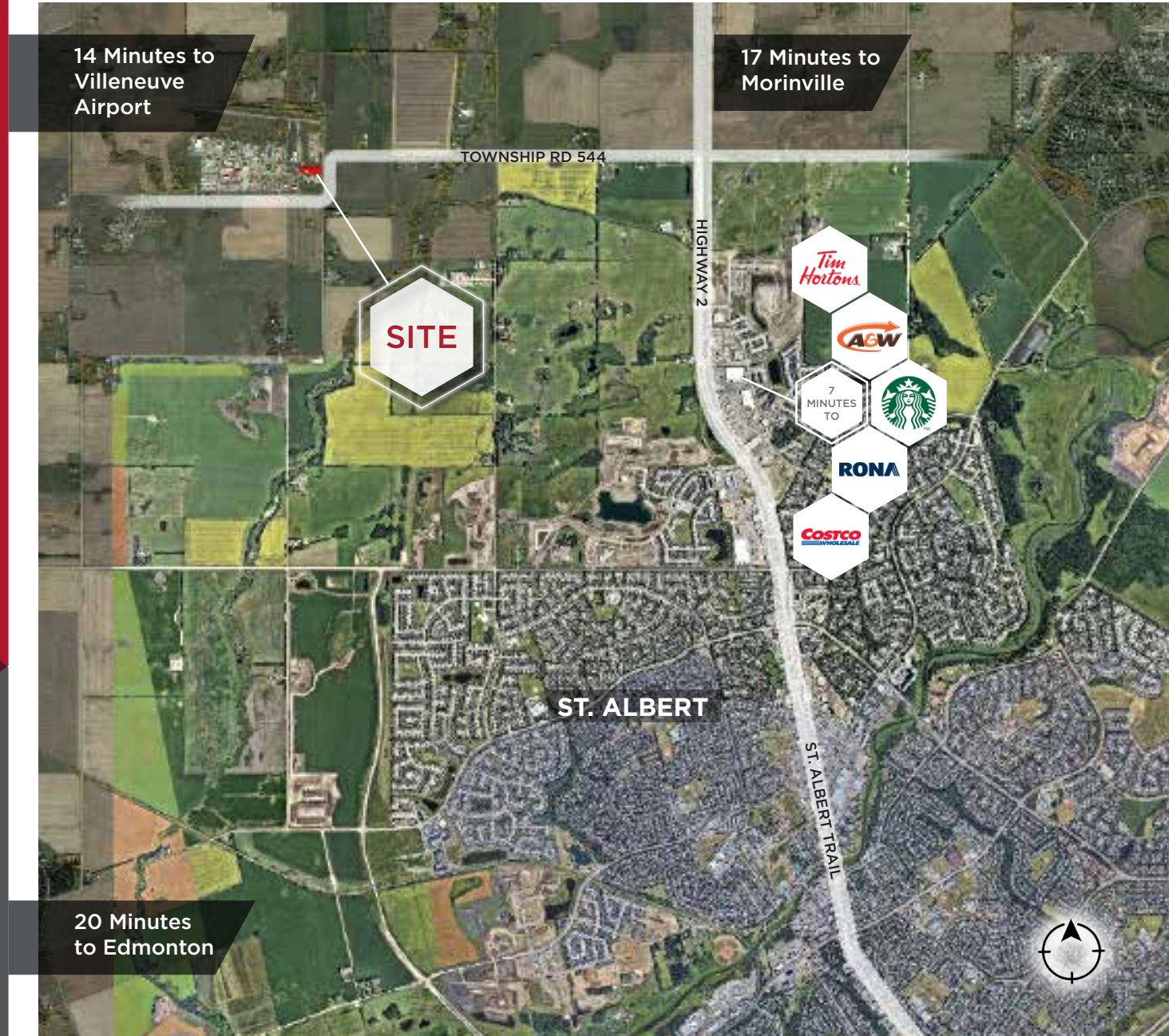
Municipal Address: 7 Kuryluk Boulevard
(26004 TWP 544)
Sturgeon County, AB

Zoning: 13 - Medium Industrial

Lease Rate: \$6,000 Gross/Month

Legal Description: Plan 0929804, Lot 1, Block 20

AERIAL



Chris Van Den Biggelaar
Associate Partner
780 701 3287
chris.biggelaar@cwedm.com

Doug Greschuk
Partner
780 722 4344
doug.greschuk@cwedm.com

CUSHMAN & WAKEFIELD
Edmonton
Suite 2700, TD Tower
10088 - 102 Avenue
Edmonton, AB T5J 2Z1
www.cwedm.com

Cushman & Wakefield Edmonton is independently owned and operated / A Member of the Cushman & Wakefield Alliance. No warranty or representation, express or implied, is made to the accuracy or completeness of the information contained herein, and same is submitted subject to errors, omissions, change of price, rental or other conditions, withdrawal without notice, and to any special listing conditions imposed by the property owner(s). As applicable, we make no representation as to the condition of the property (or properties) in question. April 16, 2024.