



**CUSHMAN &  
WAKEFIELD**  
Edmonton



KURYLUK BLVD

**± 2.0  
ACRES**



RANGE ROAD 260

TOWNSHIP ROAD 544



FOR LEASE

# PRONORTH INDUSTRIAL LAND

7 Kuryluk Boulevard  
(26004 Township Road 544),  
Sturgeon County, AB

**+/- 2 ACRES PARTIALLY GRAVELLED YARD FOR LEASE**

## PROPERTY HIGHLIGHTS

- Land available for lease in ProNorth Industrial Park
- Fenced yard negotiable
- Flexible Terms
- Ideal for tenants looking for excess trailer parking, storage or laydown yard
- Conveniently located 10 minutes northwest of St. Albert with excellent access to Hwy. 633 and Hwy. 2
- Join neighbors Mr. Container & Delta Helicopters

**Chris Van Den Biggelaar**  
Associate Partner  
[780 701 3287](tel:7807013287)  
[chris.biggelaar@cwedm.com](mailto:chris.biggelaar@cwedm.com)

**Doug Greschuk**  
Partner  
[780 722 4344](tel:7807224344)  
[doug.greschuk@cwedm.com](mailto:doug.greschuk@cwedm.com)

**CUSHMAN & WAKEFIELD**  
Edmonton  
Suite 2700, TD Tower  
10088 - 102 Avenue  
Edmonton, AB T5J 2Z1  
[www.cwedm.com](http://www.cwedm.com)

Cushman & Wakefield Edmonton is independently owned and operated / A Member of the Cushman & Wakefield Alliance. No warranty or representation, express or implied, is made to the accuracy or completeness of the information contained herein, and same is submitted subject to errors, omissions, change of price, rental or other conditions, withdrawal without notice, and to any special listing conditions imposed by the property owner(s). As applicable, we make no representation as to the condition of the property (or properties) in question. April 16, 2024.

# PROPERTY DETAILS

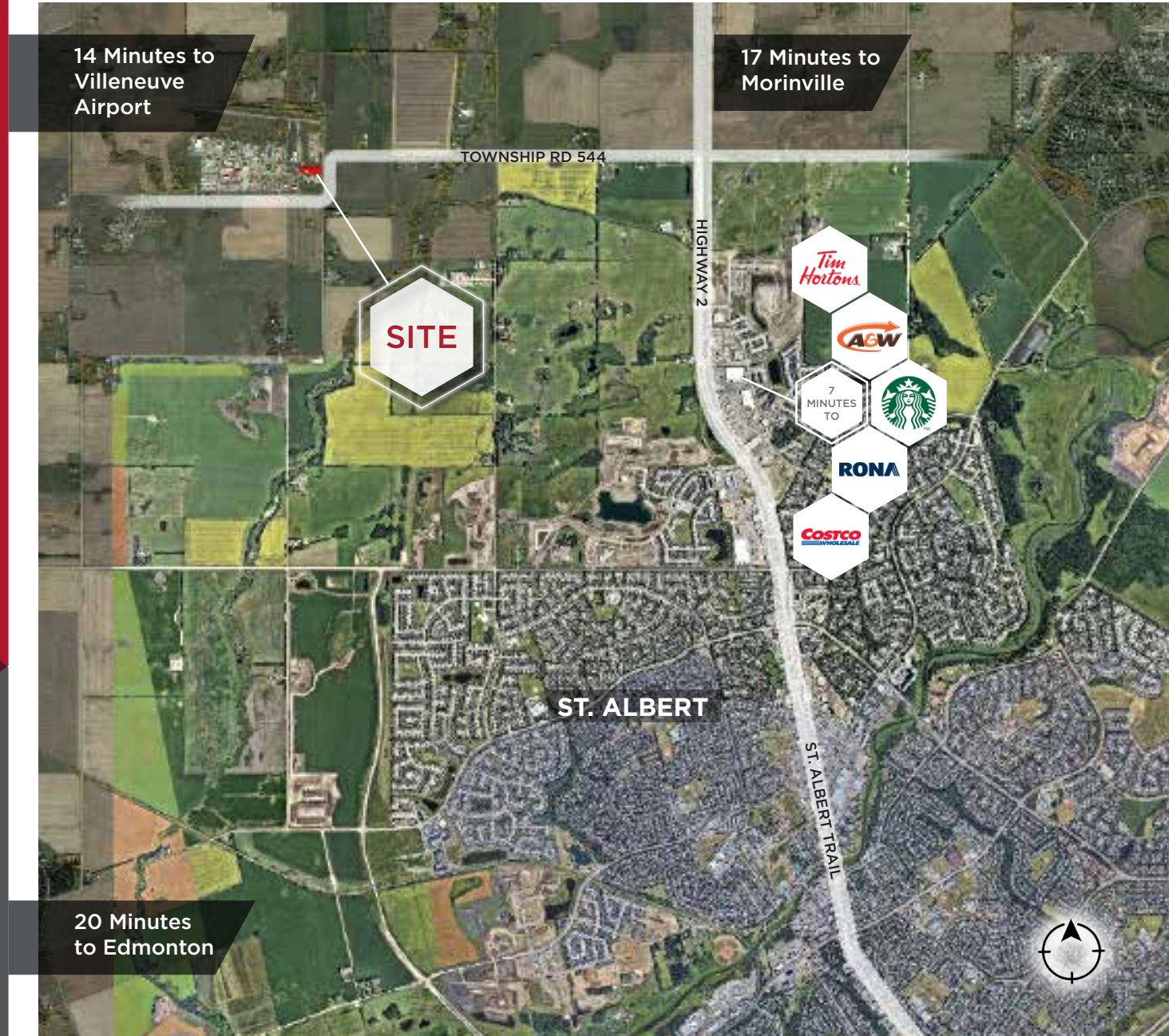
Municipal Address: 7 Kuryluk Boulevard  
(26004 TWP 544)  
Sturgeon County, AB

Zoning: 13 - Medium Industrial

Lease Rate: \$6,000 Gross/Month

Legal Description: Plan 0929804, Lot 1, Block 20

## AERIAL



**Chris Van Den Biggelaar**  
Associate Partner  
780 701 3287  
[chris.biggelaar@cwedm.com](mailto:chris.biggelaar@cwedm.com)

**Doug Greschuk**  
Partner  
780 722 4344  
[doug.greschuk@cwedm.com](mailto:doug.greschuk@cwedm.com)

**CUSHMAN & WAKEFIELD**  
Edmonton  
Suite 2700, TD Tower  
10088 - 102 Avenue  
Edmonton, AB T5J 2Z1  
[www.cwedm.com](http://www.cwedm.com)

Cushman & Wakefield Edmonton is independently owned and operated / A Member of the Cushman & Wakefield Alliance. No warranty or representation, express or implied, is made to the accuracy or completeness of the information contained herein, and same is submitted subject to errors, omissions, change of price, rental or other conditions, withdrawal without notice, and to any special listing conditions imposed by the property owner(s). As applicable, we make no representation as to the condition of the property (or properties) in question. April 16, 2024.