

FOR LEASE

FORMER HUSKY - FIXTURED RESTAURANT

1041 14 Avenue, Wainwright, AB
3,865 SF AVAILABLE



Jamie Topham

Partner
780 702 4259
jamie.topham@cwedm.com

Devan Ramage

Associate
780 702 9479
devan.ramage@cwedm.com

Gary Killips

Partner
780 917 8332
gary.killips@cwedm.com

Cody Miner, B.COMM.

Sales Assistant
780 702 2982
cody.miner@cwedm.com

**CUSHMAN & WAKEFIELD
Edmonton**

Suite 2700, TD Tower
10088 - 102 Avenue
Edmonton, AB T5J 2Z1
www.cwedm.com

THE OPPORTUNITY

- Fixtured restaurant with great exposure along Highway 14.
- All petroleum equipment has been removed including tanks and pumps.
- Strategically located along and with direct access to Highway 14.
- Ample electrical & gas service for restaurant user.
- Average number of vehicles along Highway 14 is approximately 7,840.
- High exposure signage available.
- C-3 Highway Commercial Zoning allows for a wide variety of uses.
- Area retailers/businesses include Boston Pizza, KFC, Domino's, Petro Canada, NAPA Auto Parts and Fas Gas.
- Site Features ample on site parking.
- Lease Rate: Market.



14 AVENUE | HIGHWAY 14 (7,480 VPD)



SITE



PROPERTY DETAILS

Municipal Address: 1041 14 Avenue,
Wainwright, AB

Legal Description: Plan 5721, Block 68,
Lot 10-15

Zoning: C3 - Highway
Commercial

Parking Area: 21 Stalls

Description: Former Husky
gas station and
c-store with fixtured
restaurant

Size: 3,865 SF

Lot Area: 33,397 SF

Additional Rent: \$11.00 per SF
(est. 2023)

DEMOGRAPHICS



POPULATION

1km	3km	5km
2,852	7,446	7,638



HOUSEHOLDS

1km	3km	5km
1,206	2,977	3,016



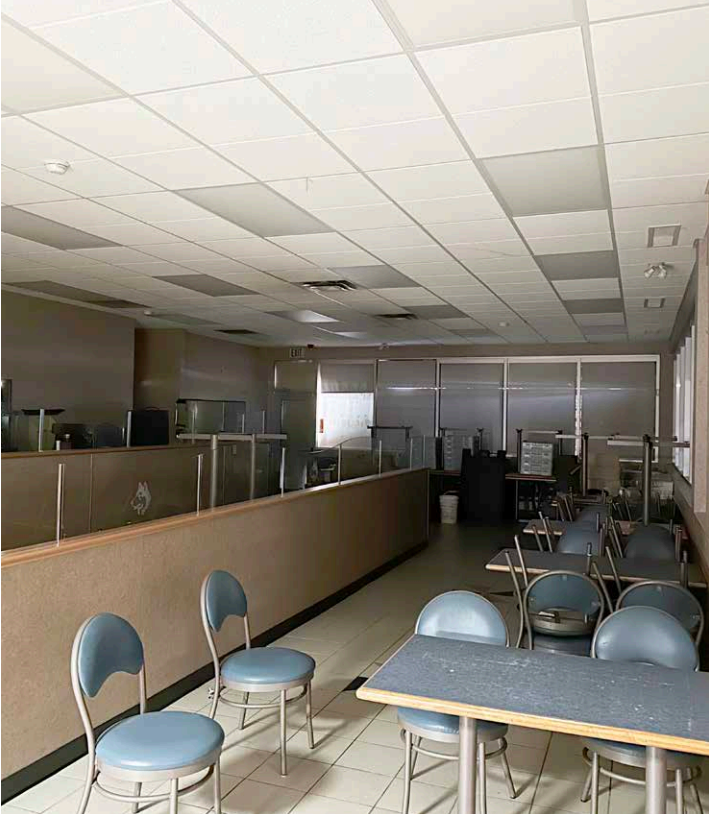
AVERAGE INCOME

1km	3km	5km
\$112,561	\$114,653	\$114,972

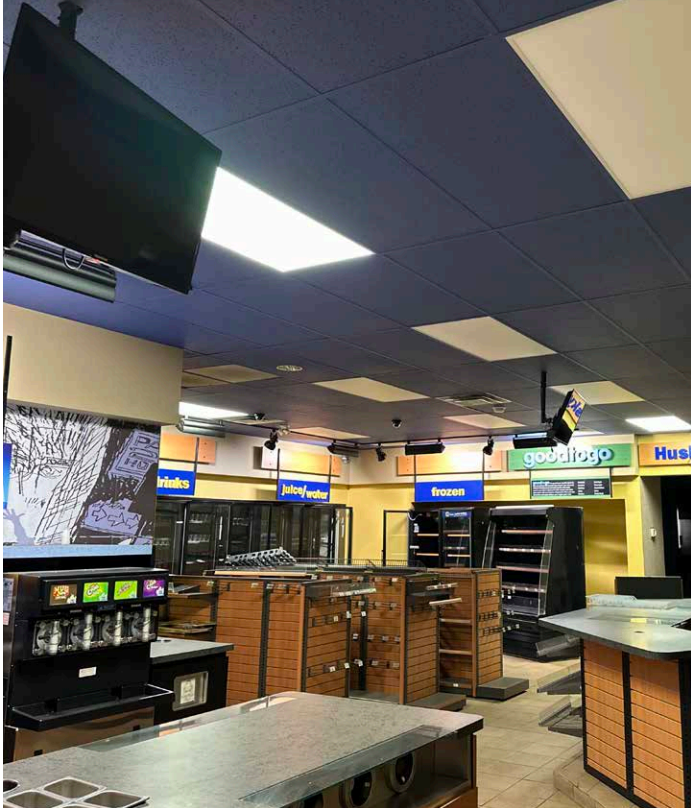
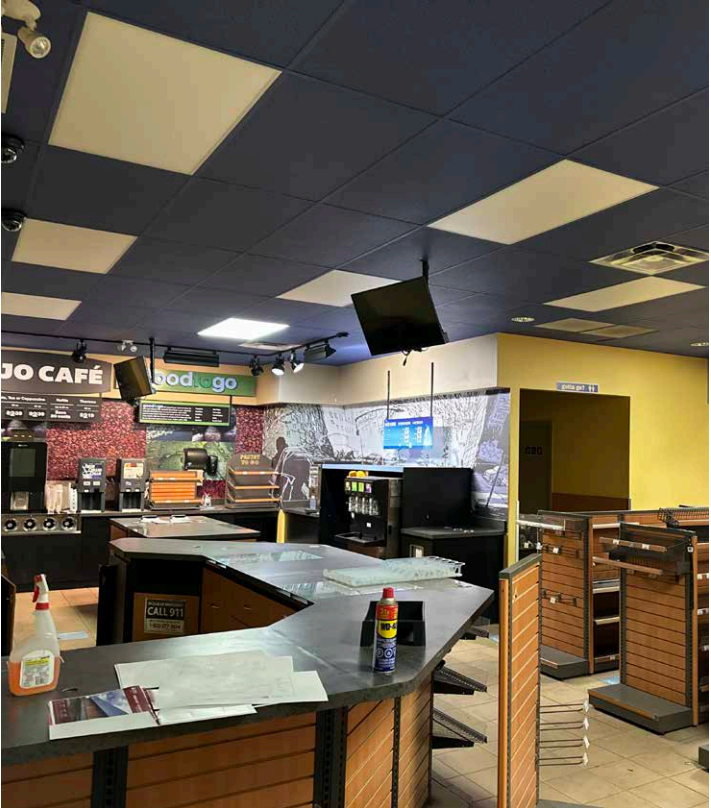


VEHICLES PER DAY

7,840 on 14 Avenue (Highway 14) in front of
property



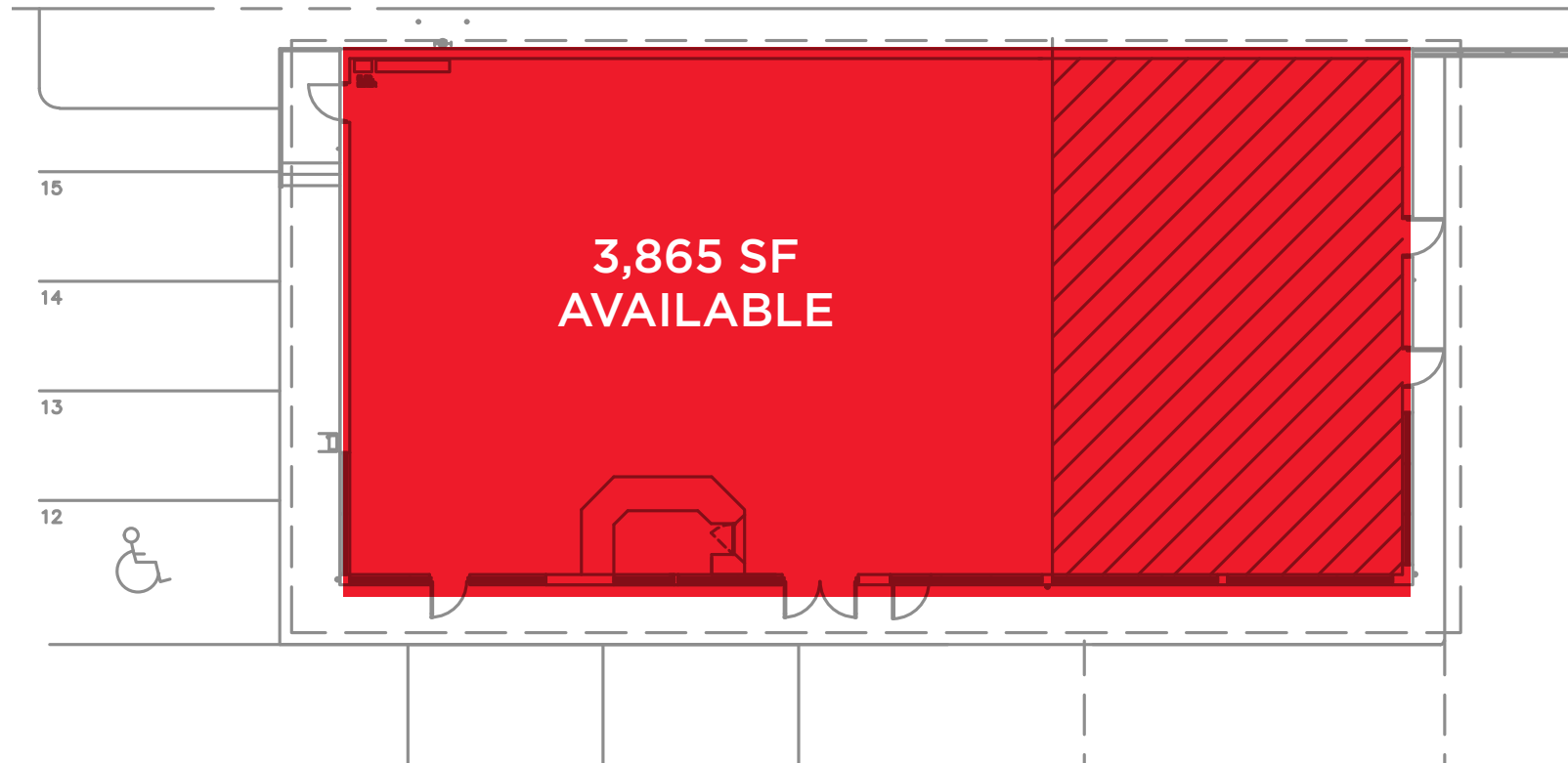
INTERIOR PHOTOS



SITE PLAN



GRAVEL LANE



14 AVENUE/HIGHWAY 14



**CUSHMAN &
WAKEFIELD**
Edmonton

Jamie Topham

Partner

780 702 4259

jamie.topham@cwedmonton.com

Devan Ramage

Associate

780 702 9479

devan.ramage@cwedmonton.com

Gary Killips

Partner

780 917 8332

gary.killips@cwedmonton.com

Cody Miner, B.COMM.

Sales Assistant

780 702 2982

cody.miner@cwedmonton.com