

FOR LEASE

CHRISTY'S CROSSING

5902 49 Street, Barrhead, AB

RETAIL OPPORTUNITIES AVAILABLE!



Gary Killips

Partner
780 917 8332
gary.killips@cwedm.com

Brett Killips

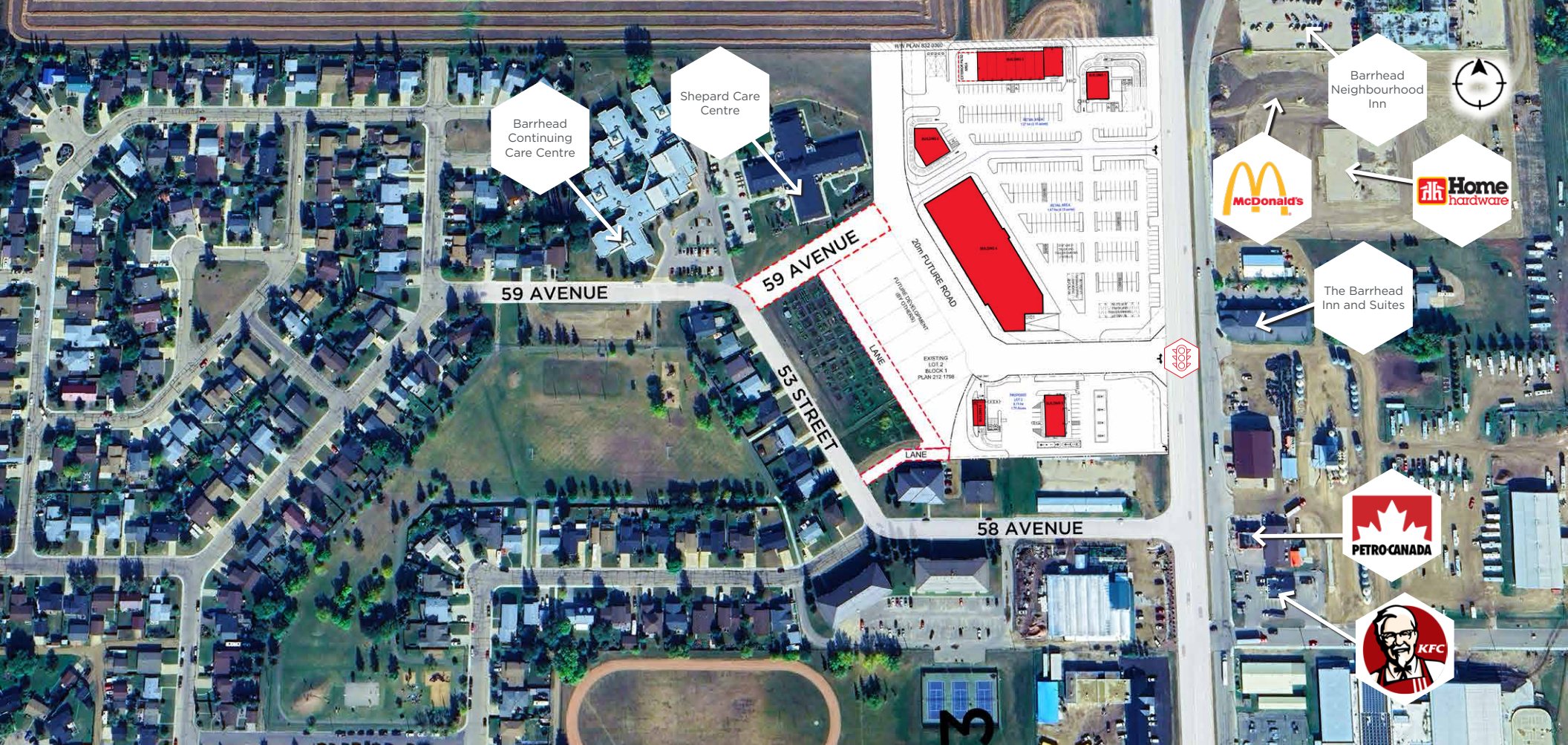
Partner
780 702 2948
brett.killips@cwedm.com

Jeff McCammon, CCIM

Senior Associate
780 445 0026
jeff.mccammon@cwedm.com

Cody Miner, B.COMM.

Sales Assistant
780 702 2982
cody.miner@cwedm.com



NEW TRAFFIC LIGHT DEVELOPMENT



NEW ROAD DEVELOPMENT

THE OPPORTUNITY

- Multiple opportunities available
- Grocery anchored centre
- Immediately across the street from the new Home Hardware
- Direct access and egress from Highway 18
- Population of Barrhead is 4,591 (2022)

DEMOGRAPHICS



POPULATION

1 KM: 2,257 | 3 KM: 4,572 | 5 KM: 4,709



HOUSEHOLDS

1 KM: 1,030 | 3 KM: 1,953 | 5 KM: 1,997



HOUSEHOLD INCOME

1 KM: \$93,158 | 3 KM: \$100,579 | 5 KM: \$100,820



VEHICLES PER DAY

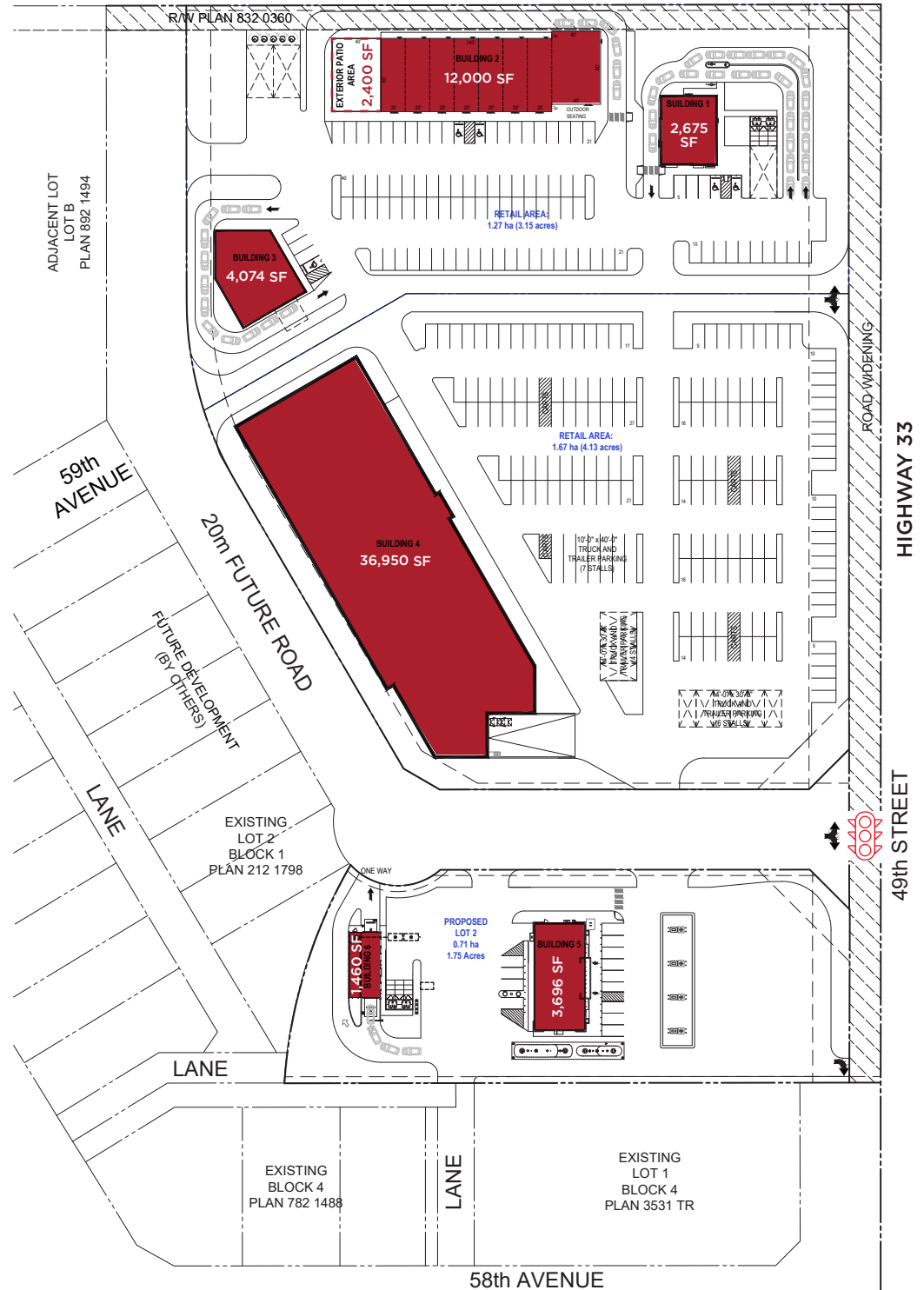
3,580 on Highway 18 | 6,790 on Highway 33



DRONE VIDEO

PROPERTY DETAILS

Municipal Address: 5902 49 Street, Barrhead, AB
Legal Description: Plan 1323264 Block 1 Lot 1
Zoning: Urban Reserve



**TENANTS AROUND THE PROPERTY:
MCDONALD'S (NOW OPEN 2024) & HOME HARDWARE**



Gary Killips
Partner
780 917 8332
gary.killips@cwedm.com

Brett Killips
Partner
780 702 2948
brett.killips@cwedm.com

Jeff McCammon, CCIM
Senior Associate
780 445 0026
jeff.mccammon@cwedm.com

Cody Miner, B.COMM.
Sales Assistant
780 702 2982
cody.miner@cwedm.com