

FOR SALE  
**CALDER BANK BUILDING**  
FORMER TREASURY BRANCH BUILDING  
11939 129 Avenue NW, Edmonton, AB



**\$1,880,000**

**CNC ZONING**

**CUSHMAN & WAKEFIELD**  
Edmonton  
Suite 2700, TD Tower  
10088 - 102 Avenue  
Edmonton, AB T5J 2Z1  
[www.cwedm.com](http://www.cwedm.com)

**Seif Jiwaji**  
Senior Associate  
780 643 2141  
[seif.jiwaji@cwedm.com](mailto:seif.jiwaji@cwedm.com)

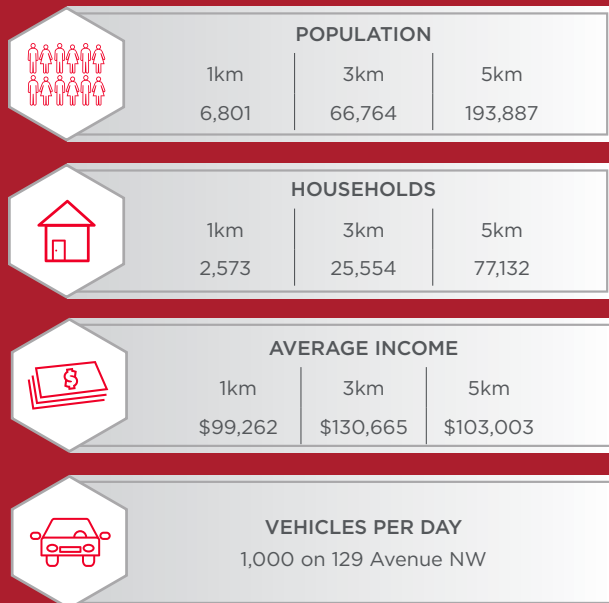
Cushman & Wakefield Edmonton is independently owned and operated / A Member of the Cushman & Wakefield Alliance. No warranty or representation express or implied is made to the accuracy or completeness of the information contained herein, and same is submitted subject to errors, omissions, change of price, rental or other conditions, withdrawal without notice, and to any special listing conditions imposed by the property owner(s). As applicable, we make no representation as to the condition of the property for properties in question. July 25, 2023



# THE OPPORTUNITY

- Prominent corner building in the quaint commercial area of Calder neighborhood.
- Neighbours include Law Office, Yoga Studio, Box Car Cafe, Laundromat and more.
- Ideal medical or professional services building.
- Zoning allows many other services including Daycare.
- Concrete and steel construction.
- Ample site parking for staff and customers.

## DEMOGRAPHICS





# PROPERTY DETAILS

## MUNICIPAL ADDRESS

11939 - 129 Avenue NW, Edmonton, AB

## LEGAL DESCRIPTION

Lot G, Block 12, Plan 6480BA

Lot J, Block 12, Plan 6480BA

Lot H, Block 12, Plan 6480BA

Lot I, Block 12, Plan 6480BA

## ZONING

Neighbourhood Convenience Commercial Zone (CNC)

## NEIGHBOURHOOD

Calder

## BUILDING SIZE

± 5,000 SF

## BUILT

1980

## PROPERTY TAX

\$21,423.37 (2023)

## PROPERTY TAX ASSESSMENT

\$856,000 (2023)

## PARKING

20 parking stalls - energized

## DESCRIPTION

Rectangular shape building at intersection

## SIZE

± 16,514 SF

## UTILITIES

All municipal utility services

## LAYOUT

Open concept floorplan, with 6 private offices. 2 offices with private exits. Common lunch room with kitchen area. Attached with two sets of bathrooms.

## ADDITIONAL FEATURES

2 secure vault rooms

## CEILING HEIGHT

± 20'

## LIGHTING

Dropdown ceiling with embedded fluorescent lighting.

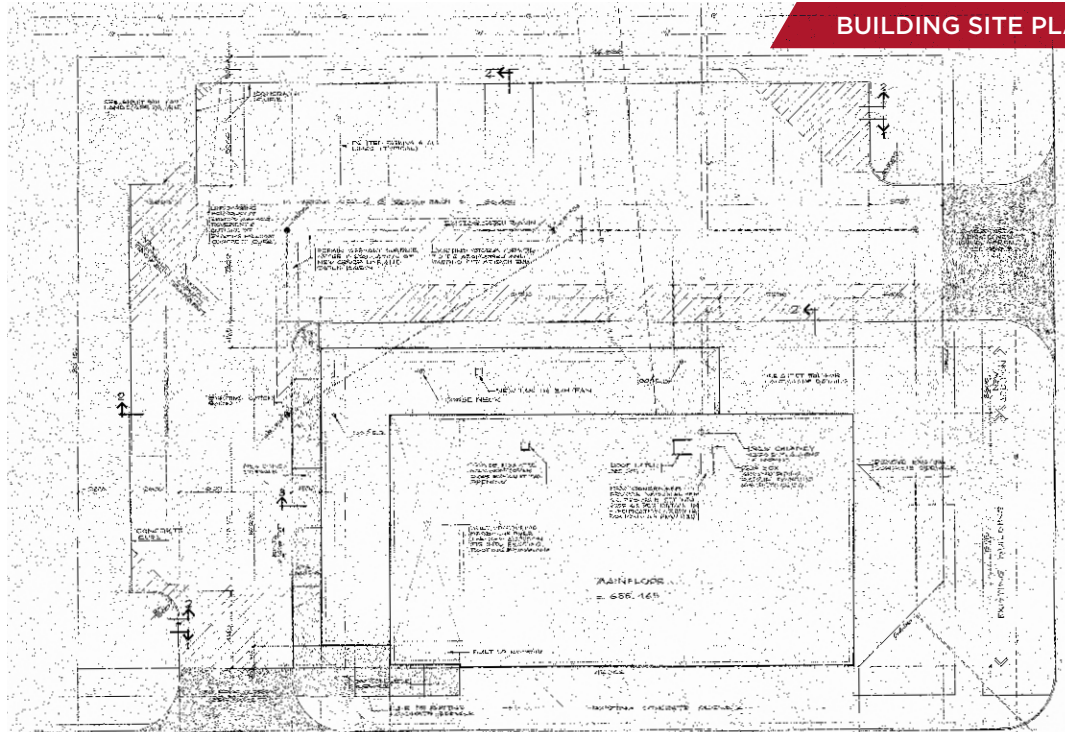
## MECHANICAL ROOM

Original commercial grade furnaces with air-conditioning

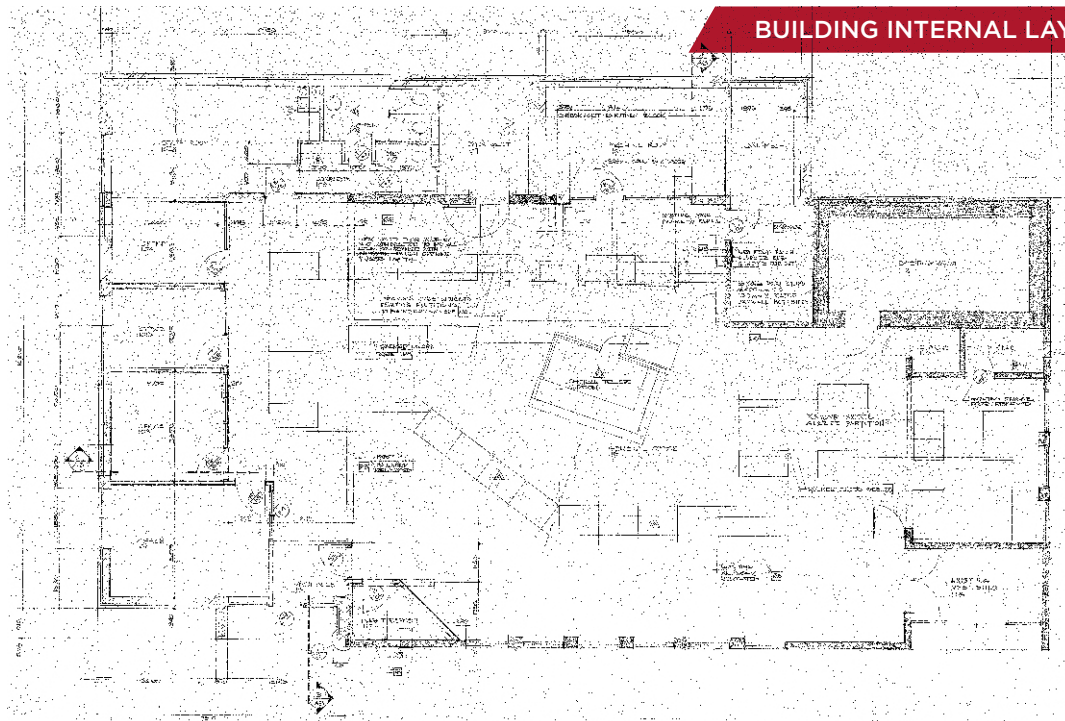
## POWER

400 Amp incoming service | Sub-panels - 200 amp, 120/240 Volt - 3 Phase (TBC)

## BUILDING SITE PLAN



## BUILDING INTERNAL LAYOUT







**CUSHMAN &  
WAKEFIELD**

Edmonton

**Seif Jiwaji**

Senior Associate

780 643 2141

[seif.jiwaji@cwedmonton.com](mailto:seif.jiwaji@cwedmonton.com)

Cushman & Wakefield Edmonton is independently owned and operated / A Member of the Cushman & Wakefield Alliance. No warranty or representation express or implied is made to the accuracy or completeness of the information contained herein, and same is submitted subject to errors, omissions, change of price, rental or other conditions, withdrawal without notice, and to any special listing conditions imposed by the property owner(s). As applicable, we make no representation as to the condition of the property for properties in question. July 25, 2023