

Chohan

Group of Companies

FOR LEASE

NEW SINGLE OR MULTI-TENANT BUILDINGS

**36,963 SF
MULTI- TENANT BUILDINGS**

Allard Avenue & 33 Street,
Leduc, AB

GRADE LOADING

AVAILABLE Q4 2024

YARD/TRAILER STORAGE

BUILD TO SUIT OPPORTUNITIES AVAILABLE



Cushman & Wakefield Edmonton is independently owned and operated / A Member of the Cushman & Wakefield Alliance. No warranty or representation express or implied is made to the accuracy or completeness of the information contained herein, and same is submitted subject to errors, omissions, change of price, rental or other conditions, withdrawal without notice, and to any special listing conditions imposed by the property owner(s). As applicable, we make no representation as to the condition of the property for properties in question. December 16, 2022

Andy Horvath
Partner
780 917 8338
andy.horvath@cwedm.com

Nicole Pozer
Team Coordinator
780 702 9472
nicole.pozer@cwedm.com

Burke Smith
Partner
780 917 8344
burke.smith@cwedm.com

AIRPORT ROAD

THE OPPORTUNITY



- Bay sizes starting at 18,481 SF
- Trailer storage on site
- Total of 188 surface parking stalls
- Grade loading with Drive-Thru
- Available Q4 2024

Varsteel
Ltd.

BAKER
HUGHES

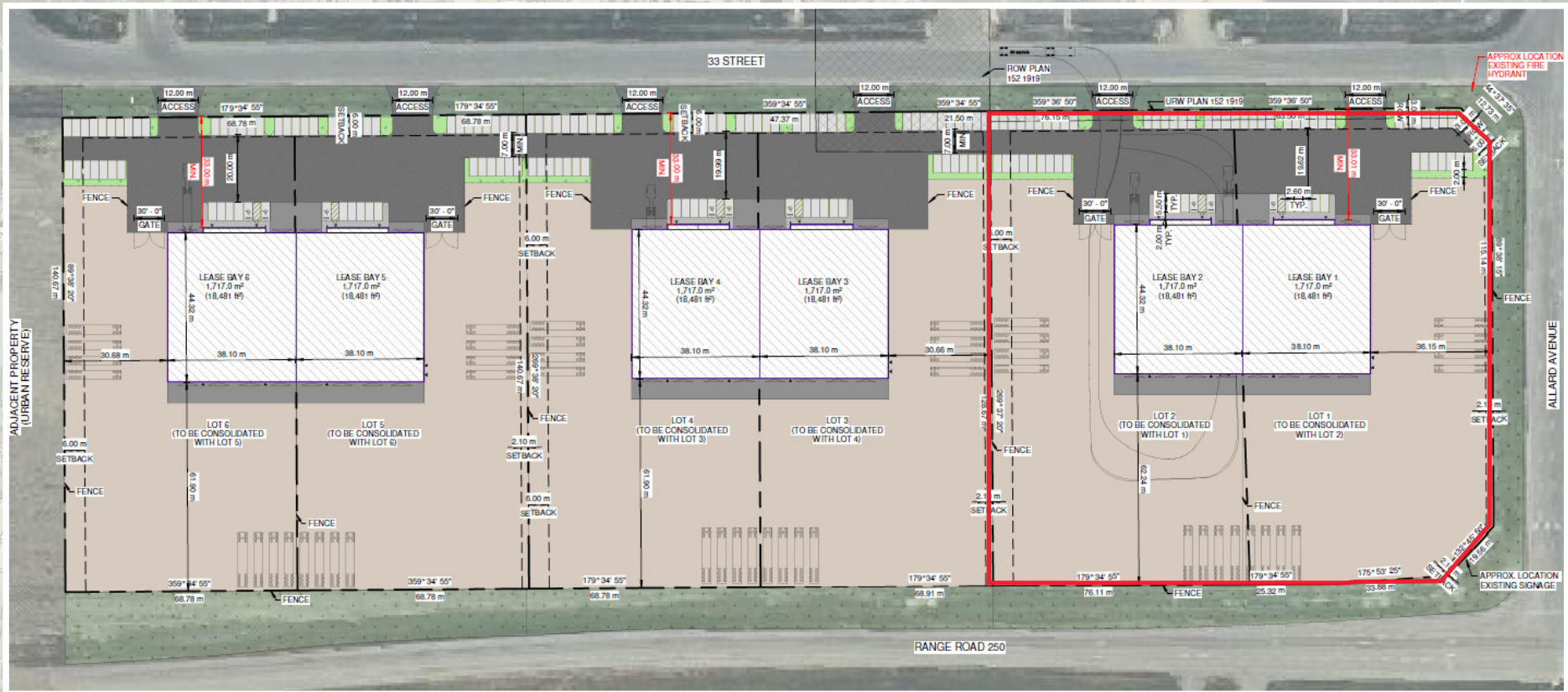


ALLARD AVENUE

RANGE ROAD 250

33 STREET





10-Ton Crane Capable



Andy Horvath
Partner
780 917 8338
andy.horvath@cwedmonton.com

Nicole Pozer
Team Coordinator
780 702 9472
nicole.pozer@cwedmonton.com

Burke Smith
Partner
780 917 8344
burke.smith@cwedmonton.com

Cushman & Wakefield Edmonton is independently owned and operated / A Member of the Cushman & Wakefield Alliance. No warranty or representation express or implied is made to the accuracy or completeness of the information contained herein, and same is submitted subject to errors, omissions, change of price, rental or other conditions, withdrawal without notice, and to any special listing conditions imposed by the property owner(s). As applicable, we make no representation as to the condition of the property for properties in question. December 16, 2022