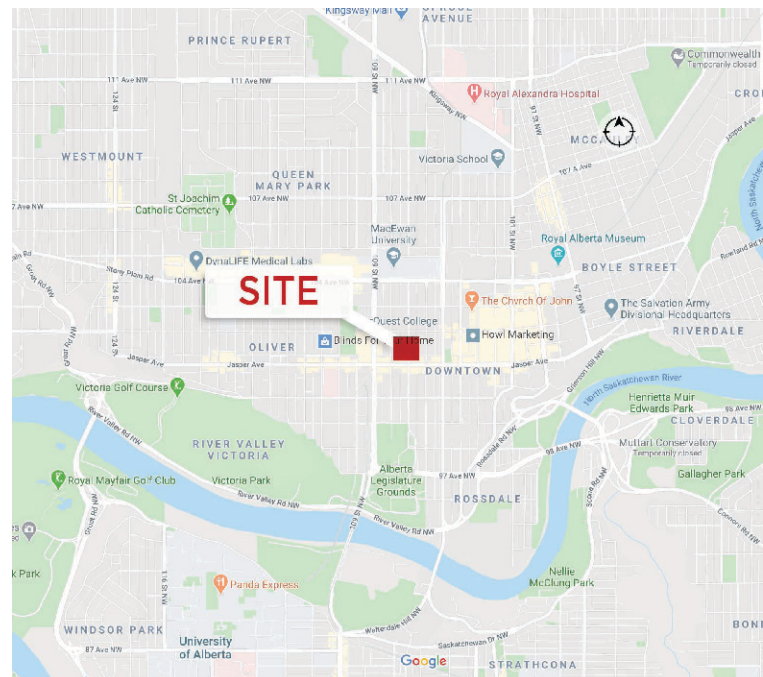




**Second: 4,554 SF Fully Fixtured Space
(Can Be Sub-Divided to 3,000 SF & 1,550 SF)**

Property Highlights

- Character building with an open floor concept
- Second floor space assessable by elevator through common area lobby
- Parking stalls available at an additional cost
- Hourly street parking in front of Premises
- Walking distance to the Corona LRT station
- In the heart of downtown right off Jasper Avenue



Dustin Bateyko
Associate Partner
780 702 4257
dustin.bateyko@cwedmonton.com

CUSHMAN & WAKEFIELD
Edmonton
Suite 2700, TD Tower
10088 - 102 Avenue
Edmonton, AB T5J 2Z1
www.cwedmonton.com

Cushman & Wakefield Edmonton is independently owned and operated / A Member of the Cushman & Wakefield Alliance. No warranty or representation, express or implied, is made to the accuracy or completeness of the information contained herein, and same is submitted subject to errors, omissions, change of price, rental or other conditions, withdrawal without notice, and to any special listing conditions imposed by the property owner(s). As applicable, we make no representation as to the condition of the property (or properties) in question. September 9, 2022



**CUSHMAN &
WAKEFIELD**
Edmonton

FOR LEASE

Maclean Block

10112 107 Street, Edmonton, AB

Property Details

Lease Area: Second Floor - 4,554 SF
(Can be Sub-Divide to 3000 SF & 1,550 SF)

Lease Rate: Market

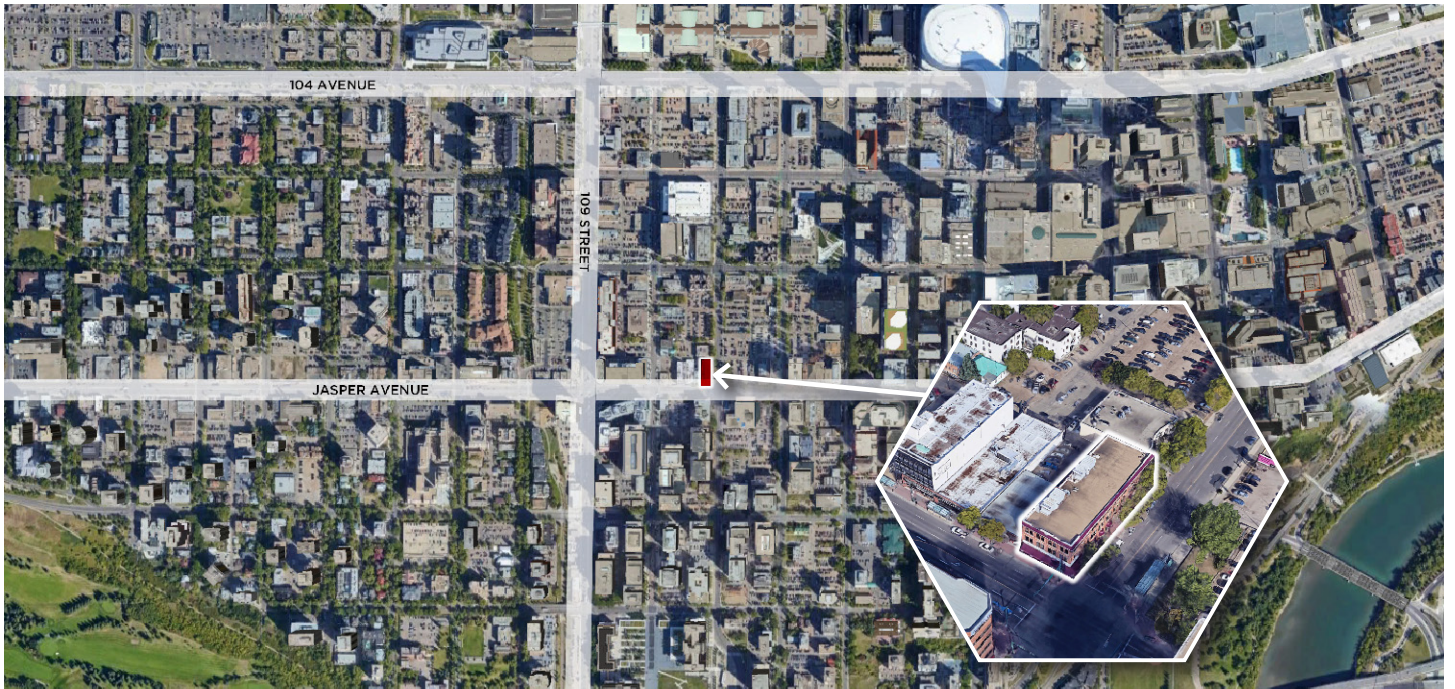
Operating Costs: \$16.72 Per SF
& Janitorial - Second Floor

Parking Main: 15 stalls at \$180 per month per stall
Second:

Property Photos



Aerial Photo



Dustin Bateyko

Associate Partner

780 702 4257

dustin.bateyko@cwedmonton.com

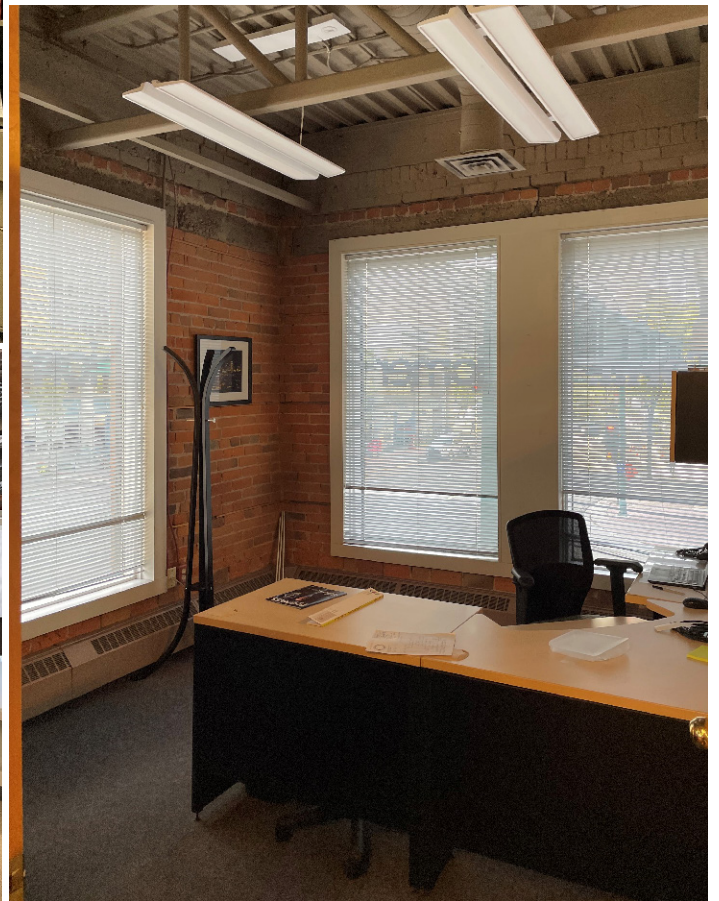
Cushman & Wakefield Edmonton is independently owned and operated / A Member of the Cushman & Wakefield Alliance. No warranty or representation, express or implied, is made to the accuracy or completeness of the information contained herein, and same is submitted subject to errors, omissions, change of price, rental or other conditions, withdrawal without notice, and to any special listing conditions imposed by the property owner(s). As applicable, we make no representation as to the condition of the property (or properties) in question. September 9, 2022

CUSHMAN & WAKEFIELD Edmonton

Suite 2700, TD Tower
10088 - 102 Avenue
Edmonton, AB T5J 2Z1

www.cwedmonton.com

Property Photos - Second Floor



Dustin Bateyko
Associate Partner
780 702 4257
dustin.bateyko@cwedmonton.com

Cushman & Wakefield Edmonton is independently owned and operated / A Member of the Cushman & Wakefield Alliance. No warranty or representation, express or implied, is made to the accuracy or completeness of the information contained herein, and same is submitted subject to errors, omissions, change of price, rental or other conditions, withdrawal without notice, and to any special listing conditions imposed by the property owner(s). As applicable, we make no representation as to the condition of the property (or properties) in question. September 9, 2022

CUSHMAN & WAKEFIELD
Edmonton
Suite 2700, TD Tower
10088 - 102 Avenue
Edmonton, AB T5J 2Z1
www.cwedmonton.com



Dustin Bateyko
Associate Partner
780 702 4257
dustin.bateyko@cwedm.com

Cushman & Wakefield Edmonton is independently owned and operated / A Member of the Cushman & Wakefield Alliance. No warranty or representation express or implied is made to the accuracy or completeness of the information contained herein, and same is submitted subject to errors, omissions, change of price, rental or other conditions, withdrawal without notice, and to any special listing conditions imposed by the property owner(s).
As applicable, we make no representation as to the condition of the property for properties in question. September 9, 2022