

BELOW MARKET VALUE

3.01 Acres up to 6.01 Acres on 2 Separate Titles
Lloydminster Industrial Land

Property Highlights

- 3.01 acres up to 6.01 acres on 2 separate titles
- Build to suit or design build opportunity
- Direct exposure to 67 Street with excellent access to Highway 16 & Highway 17
- Full municipal services
- Available immediately
- Vendor will build to suit pending covenant
- Vendor is a licensed real estate associate in the province of Alberta

Property Details

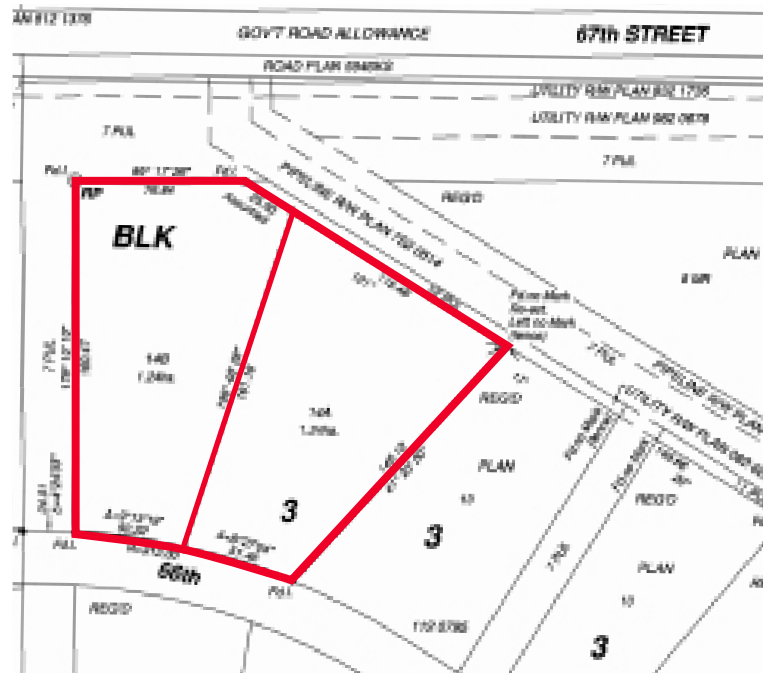
Legal Address:	Plan 142502, Block 3, Lot 14A & 14B
Zoning:	M2 - Heavy Industrial
Taxes:	\$9,598.21 (2019) per lot
Price:	\$250,000.00 per acre

Kurt Paull, SIOR
Associate Partner
780 702 4258
kurt.paull@cwedm.com

Chris Sieben
Partner
780 720 0227
chris.sieben@cwedm.com

Will Harvie
Associate Partner
780 902 4278
will.harvie@cwedm.com

CUSHMAN & WAKEFIELD
Edmonton
Suite 2700, TD Tower
10088 - 102 Avenue
Edmonton, AB T5J 2Z1
www.cwedm.com



Aerial



Kurt Paull, SIOR
Associate Partner
780 702 4258
kurt.paull@cwedm.com

Chris Sieben
Partner
780 720 0227
chris.sieben@cwedm.com

Will Harvie
Associate Partner
780 902 4278
will.harvie@cwedm.com

CUSHMAN & WAKEFIELD
Edmonton
Suite 2700, TD Tower
10088 - 102 Avenue
Edmonton, AB T5J 2Z1
www.cwedm.com