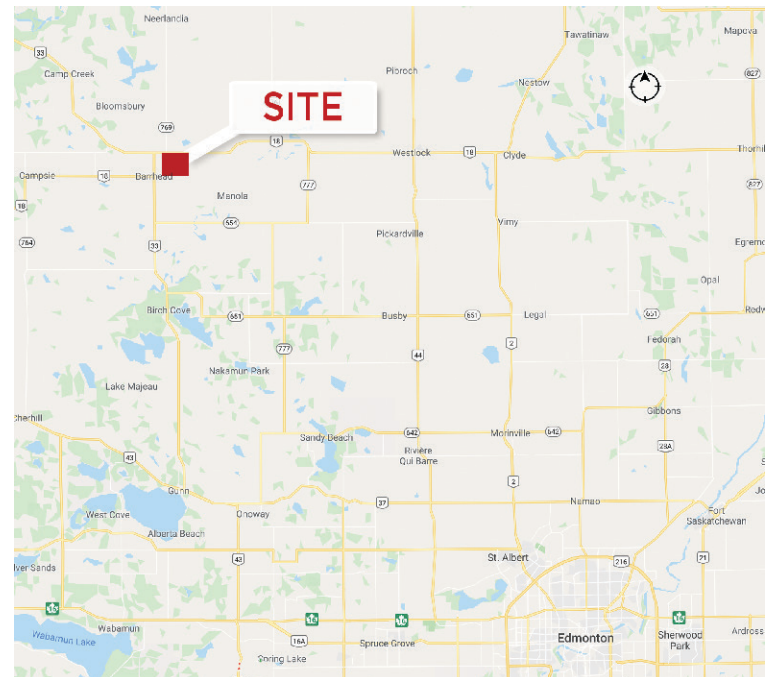




**Fully Serviced Lots - 3.95 to 7.76 Acres  
Available Immediately**

**Property Highlights**

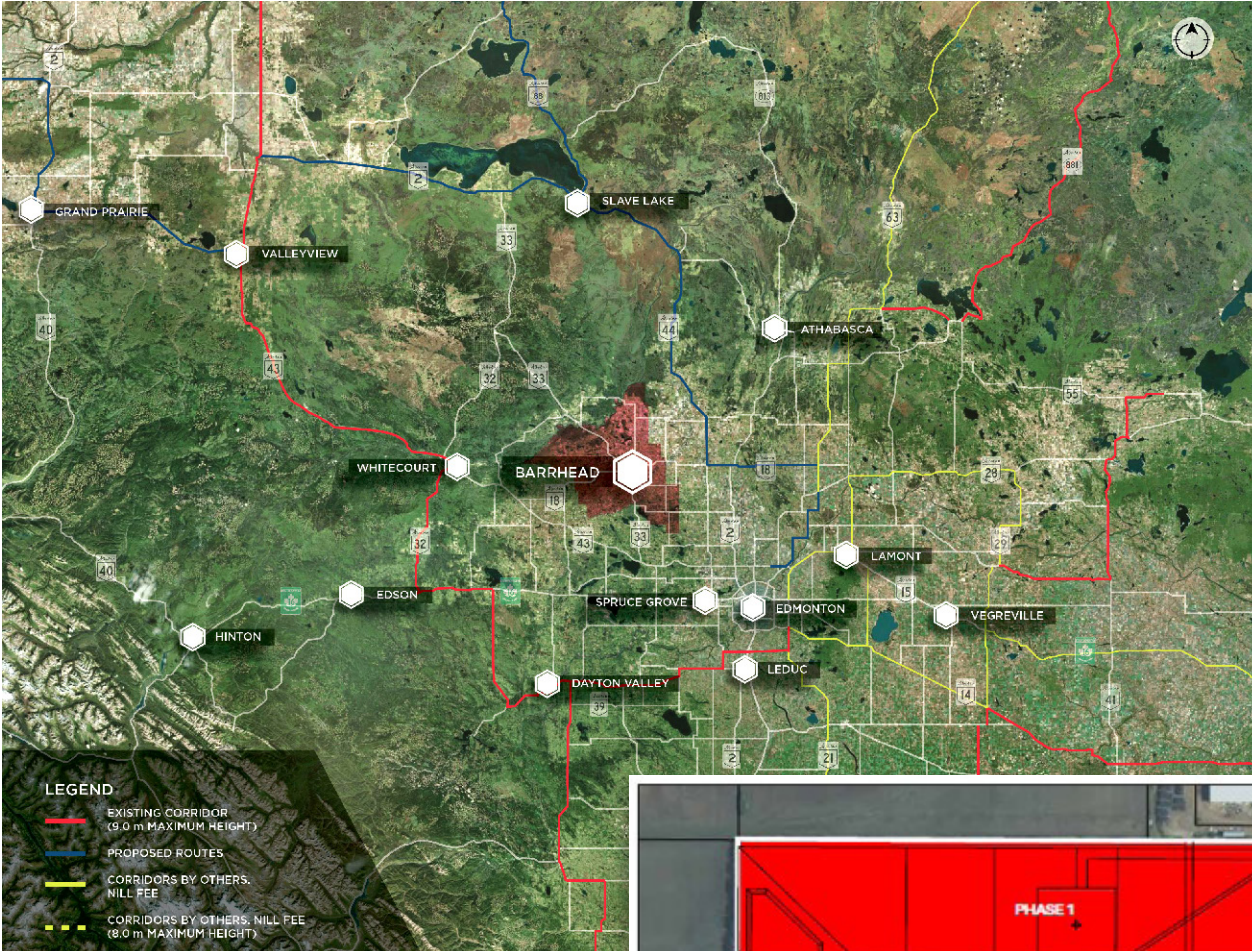
- Fully serviced lots ready for immediate development
- Negotiable purchase price and financing options available
- Excellent access with paved secondary highways
- Water, sewer, electricity and natural gas connections at property line
- Financing agreement available up to 10 years
- Access to fire suppression system
- Zoning directly controlled by the County
- 60 Minutes to City of Edmonton & 23 Minutes to CN Rail (Westlock)
- ~45,000 skilled trade & professional workers within 1 hour commute of Edmonton



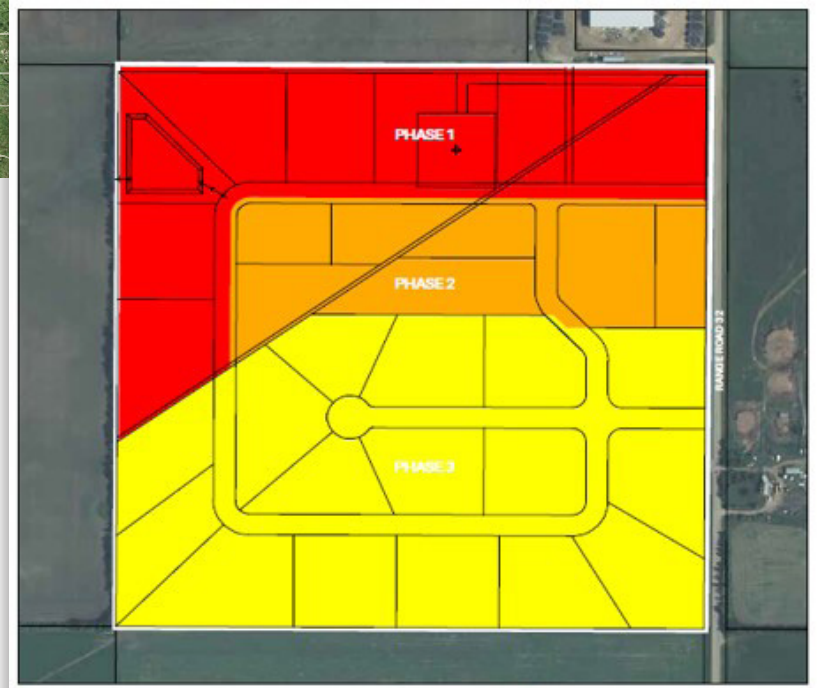
**Royce Johnson**  
Associate  
780 702 2950  
royce.johnson@cwedm.com

**CUSHMAN & WAKEFIELD**  
Edmonton  
Suite 2700, TD Tower  
10088 - 102 Avenue  
Edmonton, AB T5J 2Z1  
[www.cwedm.com](http://www.cwedm.com)

**Aerial**



**Park Phases**



**Royce Johnson**  
Associate  
780 702 2950  
royce.johnson@cwedm.com

**CUSHMAN & WAKEFIELD**  
Edmonton  
Suite 2700, TD Tower  
10088 - 102 Avenue  
Edmonton, AB T5J 2Z1  
[www.cwedm.com](http://www.cwedm.com)