



SALE, LEASE, OR BUILD TO SUIT

9.64 Acres with Direct Exposure to Highway 60

Property Highlights

- 9.64 Acre lot in Acheson
- Ready for immediate development
- Build to suit and land lease available
- Ability to subdivide lands into 5.64 & 4.0 Acre sites
- Two access point permitted
- Direct exposure to Highway 60, with excellent access to Highway 16, Highway 16A, and Anthony Henday Drive



SUBDIVISION PLAN

Kurt Paull, SIOR
Associate Partner
780 702 4258
kurt.paull@cwedm.com

Will Harvie
Associate Partner
780 902 4278
will.harvie@cwedm.com

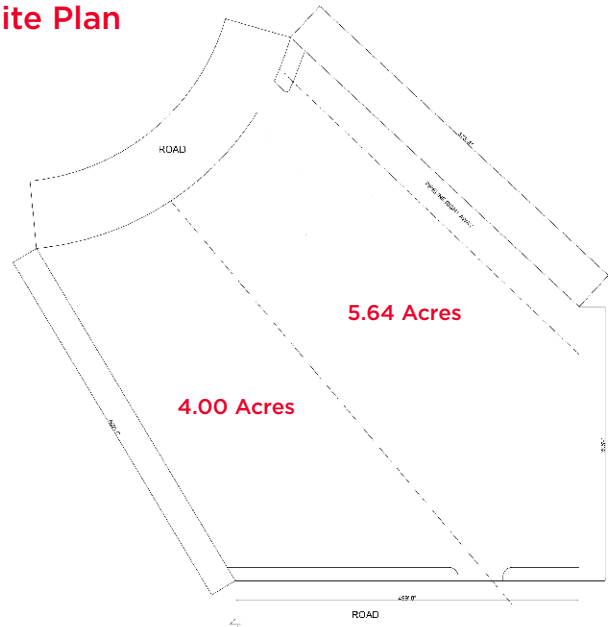
Max McPeak
Associate
780 702 9082
max.mcpeak@cwedm.com

CUSHMAN & WAKEFIELD
Edmonton
Suite 2700, TD Tower
10088 - 102 Avenue
Edmonton, AB T5J 2Z1
www.cwedm.com

Property Details

Municipal Address:	26561 111 Avenue, Parkland County, AB
Legal Description:	Plan 1723555, Block 1, Lot 48
Zoning:	BI - Business Industrial
Neighbourhood:	Zone 1 - Acheson Industrial
Lot Area:	9.64 Acres
Sale Price:	\$6,507,000 (\$675,000 per Acre)

Site Plan



Aerial



Kurt Paull, SIOR
Associate Partner
780 702 4258
kurt.paull@cwedm.com

Will Harvie
Associate Partner
780 902 4278
will.harvie@cwedm.com

Max McPeak
Associate
780 702 9082
max.mcpeak@cwedm.com

CUSHMAN & WAKEFIELD
Edmonton
Suite 2700, TD Tower
10088 - 102 Avenue
Edmonton, AB T5J 2Z1
www.cwedm.com

Cushman & Wakefield Edmonton is independently owned and operated / A Member of the Cushman & Wakefield Alliance. No warranty or representation, express or implied, is made to the accuracy or completeness of the information contained herein, and same is submitted subject to errors, omissions, change of price, rental or other conditions, withdrawal without notice, and to any special listing conditions imposed by the property owner(s). As applicable, we make no representation as to the condition of the property (or properties) in question. February 17, 2022