

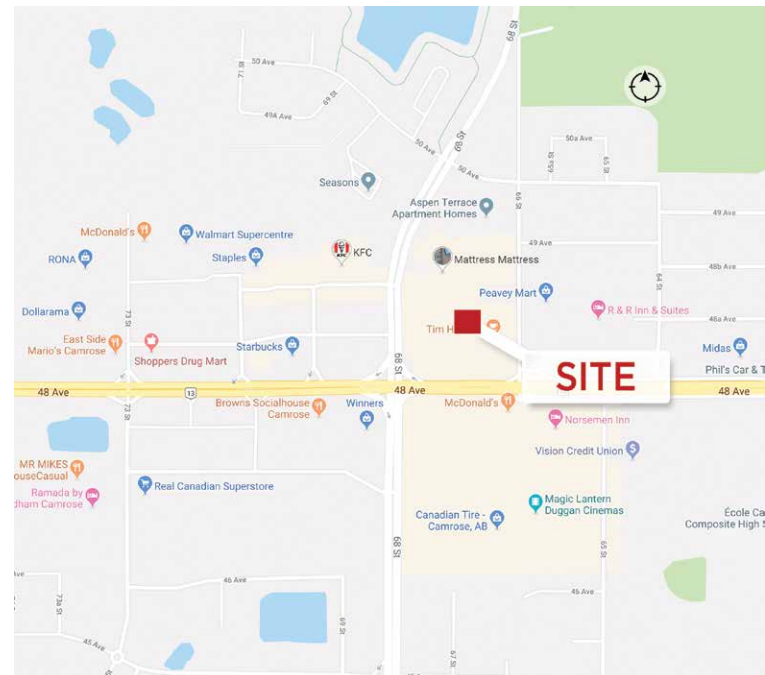


JOIN SAVE ON FOODS

## Grocery Anchored Shopping Centre

### Property Highlights

- High visibility Shopping Centre in the heart of the 48 Avenue retail corridor in Camrose
- Excellent parking and access
- Retail customer draws in the immediate area include Save On Foods, Canadian Brew House, Tim Horton's, Wendy's and Alberta Motor Association
- Many other customer generators in the area, including Wal Mart, Shoppers Drug Mart, Superstore, Safeway and Canadian Tire
- Population of Camrose over 18,700 (2016)



**David Cooney**  
Partner  
780 917 8327  
david.cooney@cwedm.com

**CUSHMAN & WAKEFIELD**  
Edmonton  
Suite 2700, TD Tower  
10088 - 102 Avenue  
Edmonton, AB T5J 2Z1  
[www.cwedm.com](http://www.cwedm.com)

Cushman & Wakefield Edmonton is independently owned and operated / A Member of the Cushman & Wakefield Alliance. No warranty or representation, express or implied, is made to the accuracy or completeness of the information contained herein, and same is submitted subject to errors, omissions, change of price, rental or other conditions, withdrawal without notice, and to any special listing conditions imposed by the property owner(s). As applicable, we make no representation as to the condition of the property (or properties) in question. June 11, 2019

## Property Details

### Availability:

Up to 7,300 SF available adjacent to  
Save On Foods

Up to 5,000 SF available adjacent  
to Canadian Brew House

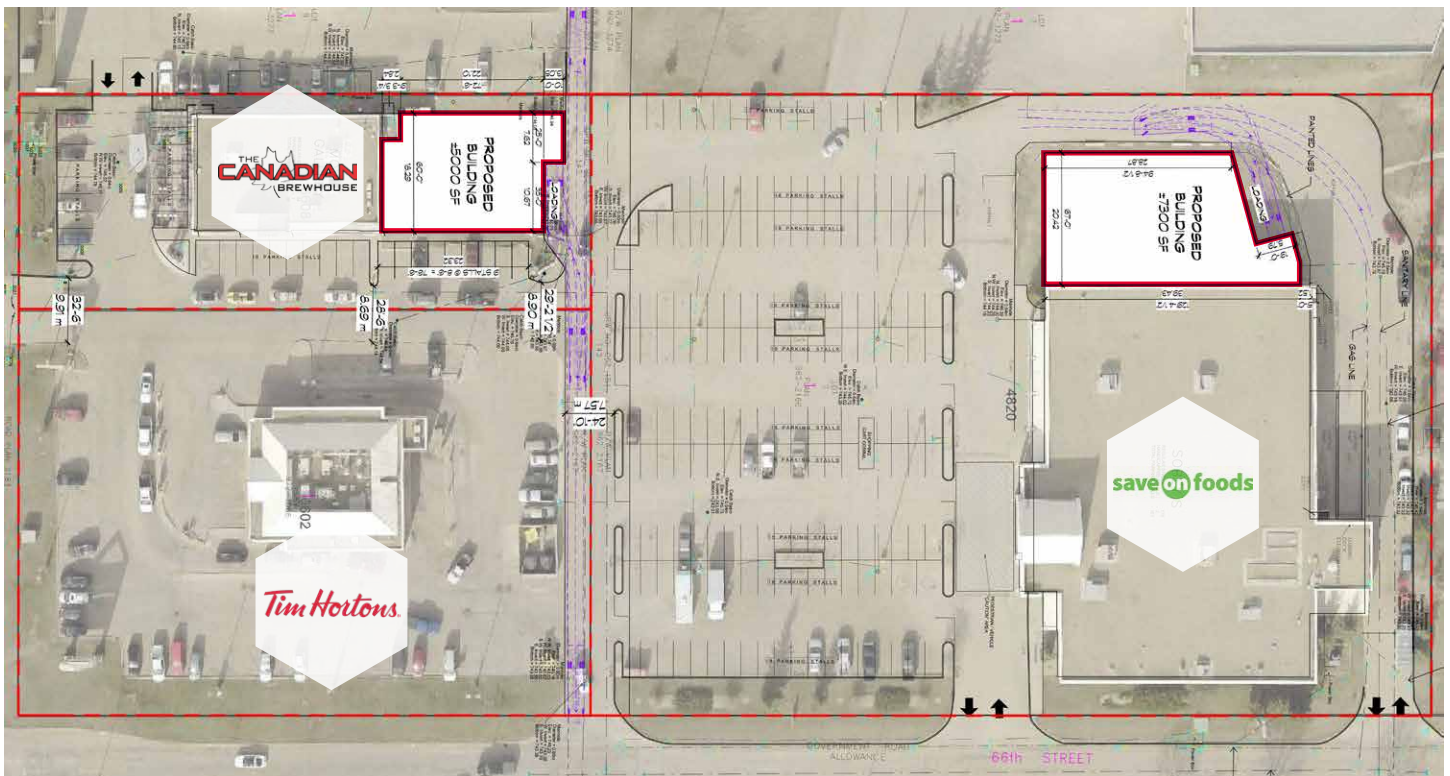
### Operating Costs:

Estimate at \$9.65 per SF (2019)

Zoning: C3



## Site Plan



**David Cooney**  
Partner  
780 917 8327  
david.cooney@cwedm.com

Cushman & Wakefield Edmonton is independently owned and operated / A Member of the Cushman & Wakefield Alliance. No warranty or representation, express or implied, is made to the accuracy or completeness of the information contained herein, and same is submitted subject to errors, omissions, change of price, rental or other conditions, withdrawal without notice, and to any special listing conditions imposed by the property owner(s). As applicable, we make no representation as to the condition of the property (or properties) in question. June 11, 2019

**CUSHMAN & WAKEFIELD**  
Edmonton  
Suite 2700, TD Tower  
10088 - 102 Avenue  
Edmonton, AB T5J 2Z1  
[www.cwedm.com](http://www.cwedm.com)