



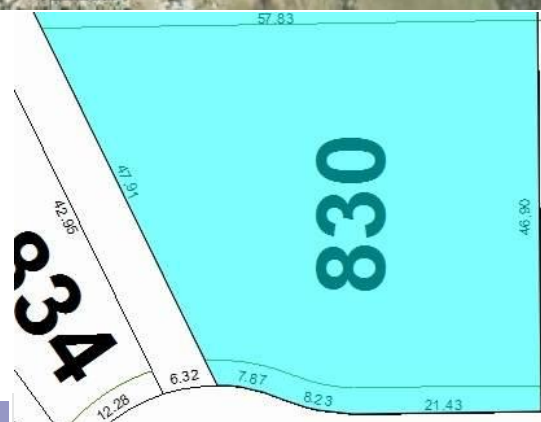
830 Schooner Drive, Cold Lake, Alberta
23,222 SF (R-3 Multi-Residential Development Land)

Lot 8; Block 21; Plan 142 5269

Sale Price: \$328,000

Property Highlights:

This property can accommodate up to 8 units, subject to landscape design and parking. Located in the new subdivision of Lefebvre Heights, a new family oriented subdivision in Cold Lake north which sits on a higher elevation. A brand new Elementary School was built in 2016, and this site is just south of the new school. Walking distance to the Lake.



For more information, please contact:

Raphael M.H. Yau, B.A. (Econ)
Partner, Multi-Family Sales
780.917.8326
Raphael.Yau@cwedm.com

Christopher Kamphius, B. Comm
Partner, Multi-Family Sales
780.917.8348
Chris.Kamphius@cwedm.com

Suite 2700, TD Tower
10088-102 Avenue
Edmonton, AB T5J 2Z1
phone: +1 780 420 1177

www.cwedm.com

23,222 SF
**(R-3 Multi-Residential
Development Land)**
Sale Price: \$328,000

This property can accommodate up to 8 units, subject to landscape design and parking. Located in the new subdivision of Lefebvre Heights in the City of Cold Lake. Zoning is R-3.



LOT PLAN



For more information, contact:

Raphael M.H. Yau, B.A. (Econ)
Partner, Multi-Family Sales
780.917.8326
Raphael.Yau@cwedm.com

Christopher Kamphius, B. Comm
Partner, Multi-Family Sales
780.917.8348
Chris.Kamphius@cwedm.com

Suite 2700, TD Tower
10088-102 Avenue
Edmonton, AB T5J 2Z1
phone: +1 780 420 1177

www.cwedm.com

Demographic	2014 Municipal Census
Greater Population	15,736
# of Households	5,540
Average Household Income	\$110,065
Average Age	30 Years