



**CUSHMAN &
WAKEFIELD**
Edmonton



FOR LEASE

MILL WOODS TOWN CENTRE PROFESSIONAL BUILDING

6203 28 Avenue, Edmonton, AB

**MOVE-IN READY
MEDICAL/
OFFICE SPACE**

Will Harvie
Associate Partner
780 902 4278
will.harvie@cwedm.com

Nick Mytopher
Associate
587 597 5475
nick.mytopher@cwedm.com

Kurt Paull, SIOR
Associate Partner
780 702 4258
kurt.paull@cwedm.com

Max McPeak
Associate
780 700 5038
max.mcpeak@cwedm.com

MEDICAL & PROFESSIONAL SPACE FOR LEASE

OPPORTUNITY

- Medical/professional building within walking distance of the Grey Nuns Hospital and Mill Woods Town Centre Mall
- Easy access to public transit
- Underground and surface parking available
- Great mix of professional and medical tenants



MEDICAL



START-UP



PROFESSIONAL

PROPERTY DETAILS

Municipal Address: 6203 28 Avenue,
Edmonton, AB

Zoning: DC1

Parking: Surface: Free
Underground: available
at market rates

Base Rent: Market

Operating Costs: \$19.98 per SF

Tenant Improvement: Negotiable

Availabilities:

MAIN FLOOR:
7,800 SF

SECOND FLOOR:
Suite 200: 1,340 SF
Suite 200A: 986 SF
Suite 208: 706 SF

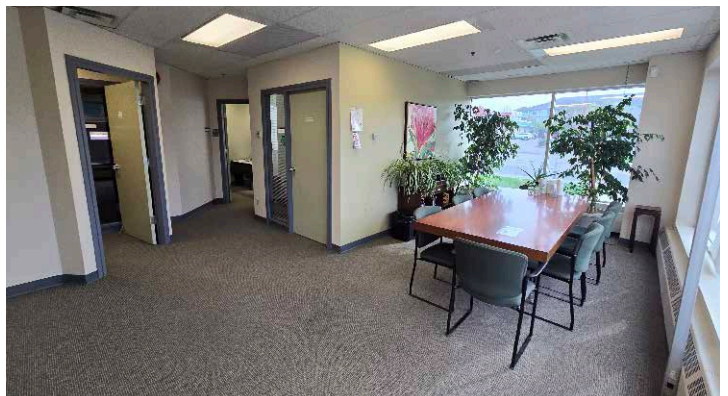
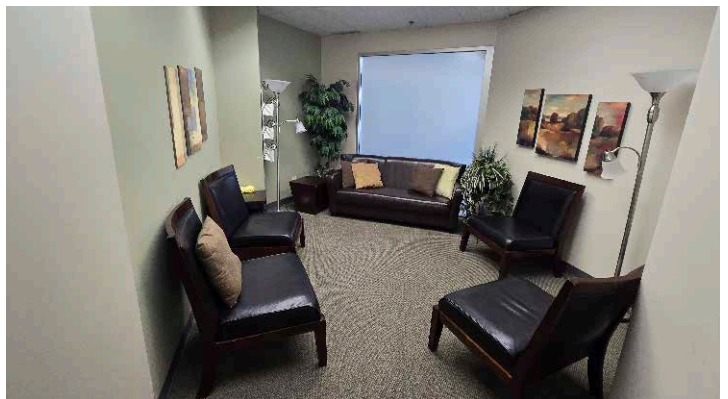
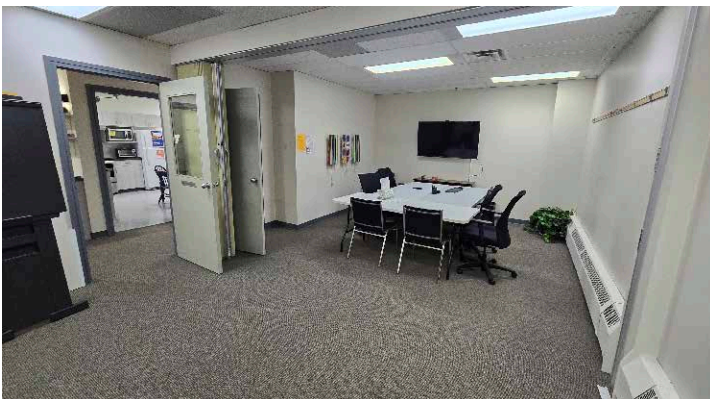
THIRD FLOOR:
Suite 304: 1,292 SF
Suite 306: 1,164 SF

AERIAL



 MILL WOODS TRANSIT CENTRE  MILL WOODS LRT STOP  LRT VALLEY LINE

MAIN FLOOR PHOTOS



SECOND FLOOR PHOTOS



THIRD FLOOR PHOTOS



Will Harvie
Associate Partner
780 902 4278
will.harvie@cwedm.com

Nick Mytopher
Associate
587 597 5475
nick.mytopher@cwedm.com

Kurt Paull, SIOR
Associate Partner
780 702 4258
kurt.paull@cwedm.com

Max McPeak
Associate
780 700 5038
max.mcpeak@cwedm.com