

FOR LEASE

PIZZA 73 BUILDING

13703 164 STREET,
EDMONTON, AB

Cushman & Wakefield Edmonton

Suite 2700, TD Tower
10088 102 Avenue
Edmonton, AB T5J 2Z1
cwedm.com

Kurt Paull, SIOR
Associate Partner
780 702 4258
kurt.paull@cwedm.com

Will Harvie
Associate Partner
780 902 4278
will.harvie@cwedm.com

Nick Mytopher
Associate
587 597 5475
nick.mytopher@cwedm.com

Max McPeak
Associate
780 700 5038
max.mcpeak@cwedm.com

PROPERTY DETAILS

MUNICIPAL ADDRESS

13703 - 164 Street, Edmonton AB

ZONING

IL - Light Industrial

AVAILABLE SIZE

Second Floor Office: 6,044 SF

SITE SIZE

2.69 Acres

SITE COVERAGE RATIO

28%



LOADING

Dock (5) 8' x 10'
Grade (1) 12' x 12'

CEILING HEIGHT

30'

LIGHTING

LED - Main Shop

HEATING

Radiant
Gas Fired Overhead - Parts Room

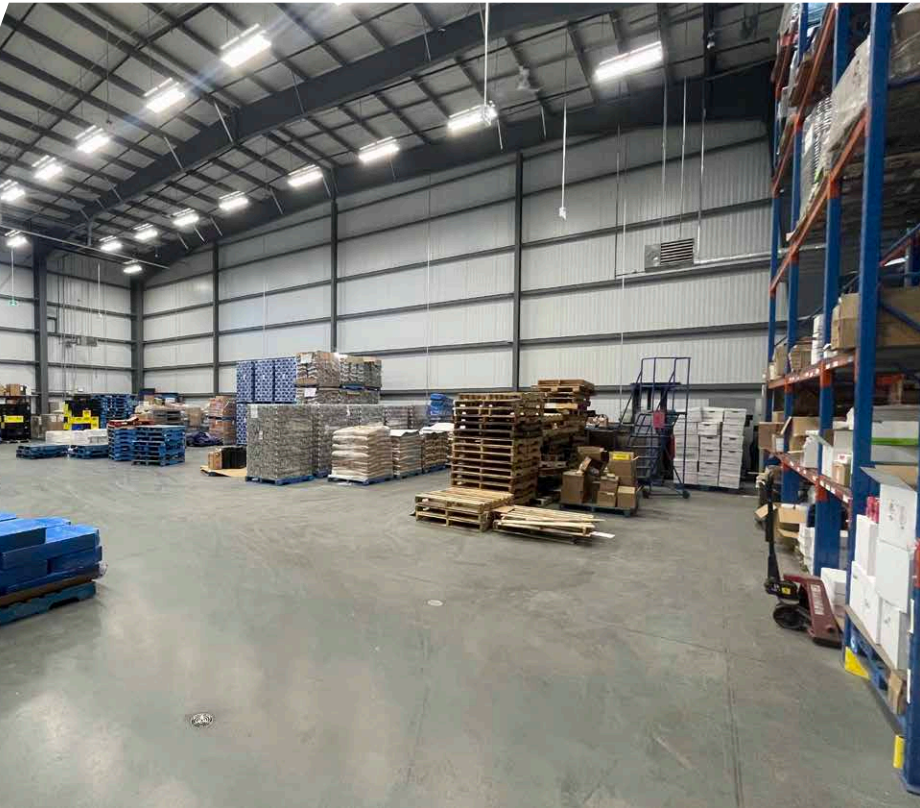
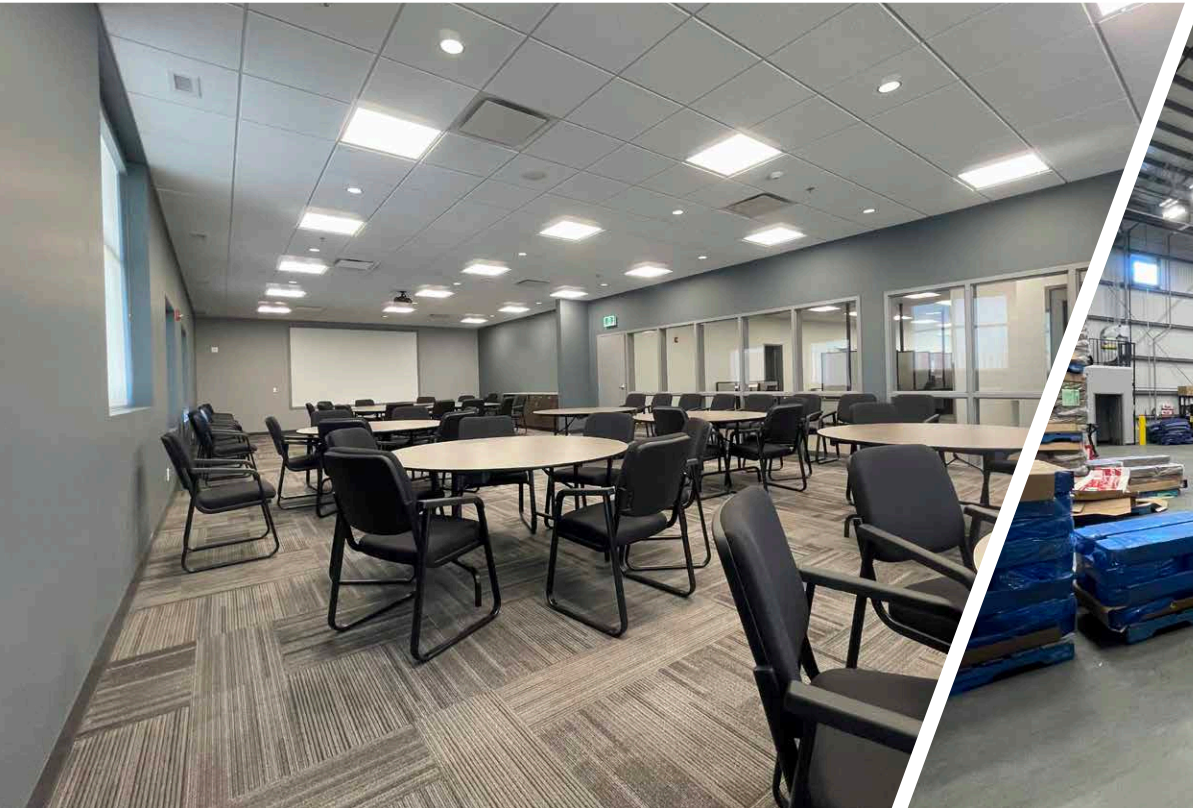
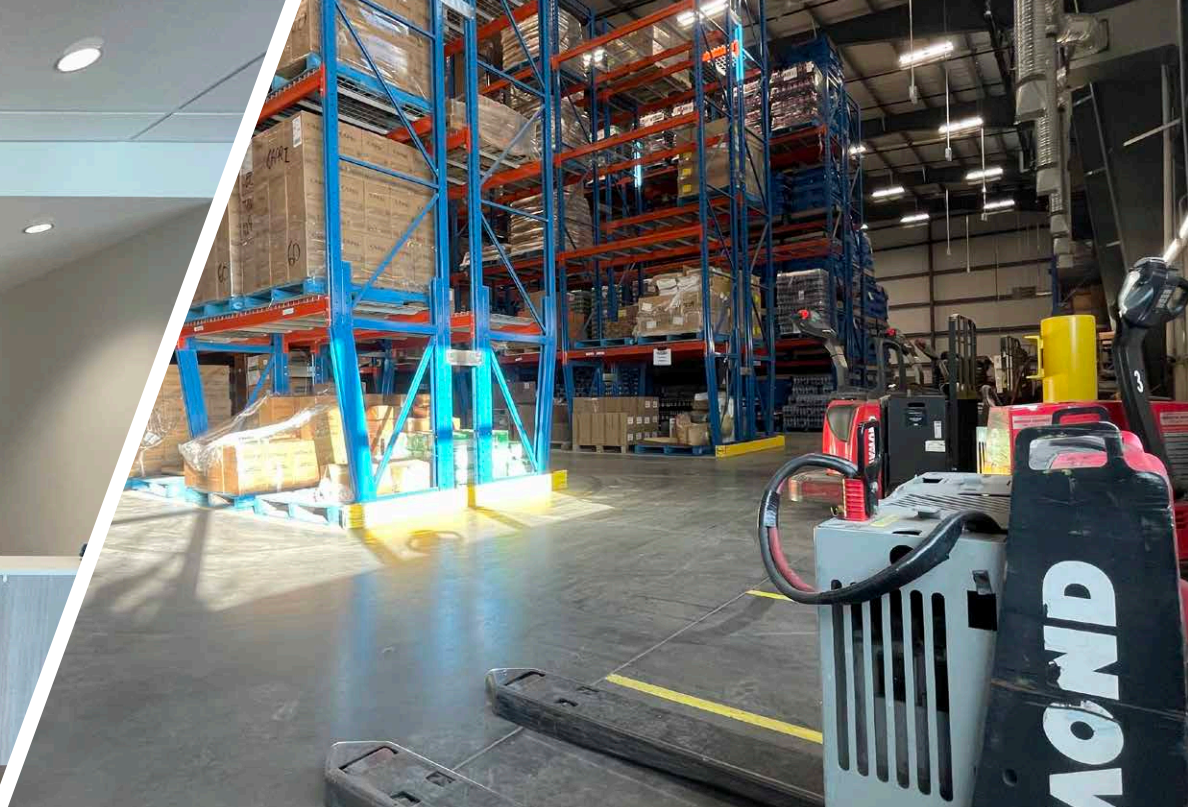
LEASE RATE

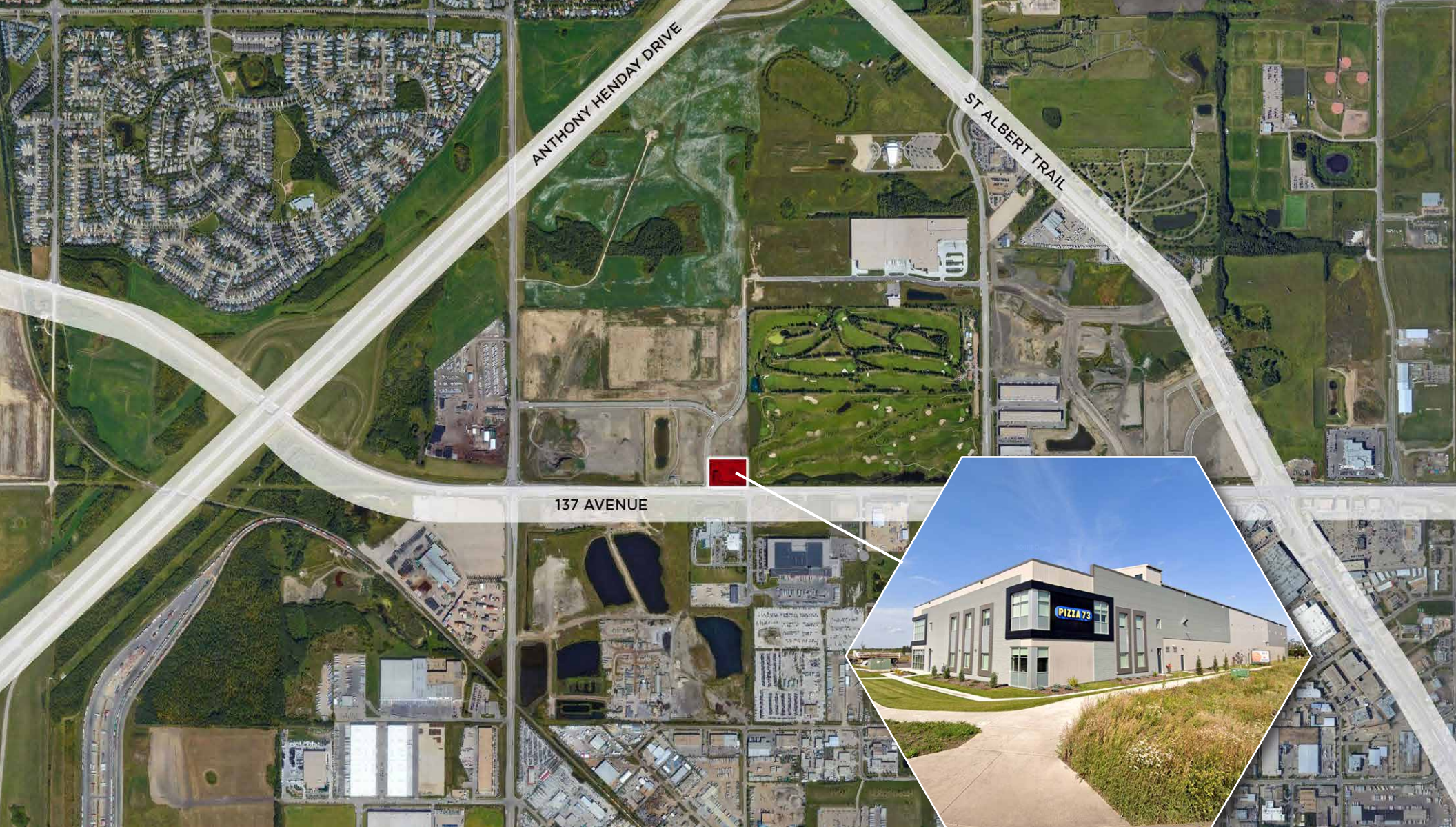
Market - Pending size option

OPERATING COSTS:

\$6.84 per SF

PROPERTY PHOTOS





ANTHONY HENDAY DRIVE

ST ALBERT TRAIL

137 AVENUE



CUSHMAN & WAKEFIELD
Edmonton

Kurt Paull, SIOR
Associate Partner
780 702 4258
kurt.paull@cwedm.com

Will Harvie
Associate Partner
780 902 4278
will.harvie@cwedm.com

Nick Mytopher
Associate
587 597 5475
nick.mytopher@cwedm.com

Max McPeak
Associate
780 700 5038
max.mcpeak@cwedm.com

Cushman & Wakefield Edmonton is independently owned and operated / A Member of the Cushman & Wakefield Alliance. No warranty or representation express or implied is made to the accuracy or completeness of the information contained herein, and same is submitted subject to errors, omissions, change of price, rental or other conditions, withdrawal without notice, and to any special listing conditions imposed by the property owner(s). As applicable, we make no representation as to the condition of the property for properties in question. Apr. 27, 2023