

BELOW MARKET VALUE

3.01 Acres up to 6.01 Acres on 2 Separate Titles
Lloydminster Industrial Land

Property Highlights

- 3.01 acres up to 6.01 acres on 2 separate titles
- Build to suit or design build opportunity
- Direct exposure to 67 Street with excellent access to Highway 16 & Highway 17
- Full municipal services
- Available immediately
- Vendor will build to suit pending covenant
- Vendor is a licensed real estate associate in the province of Alberta

Property Details

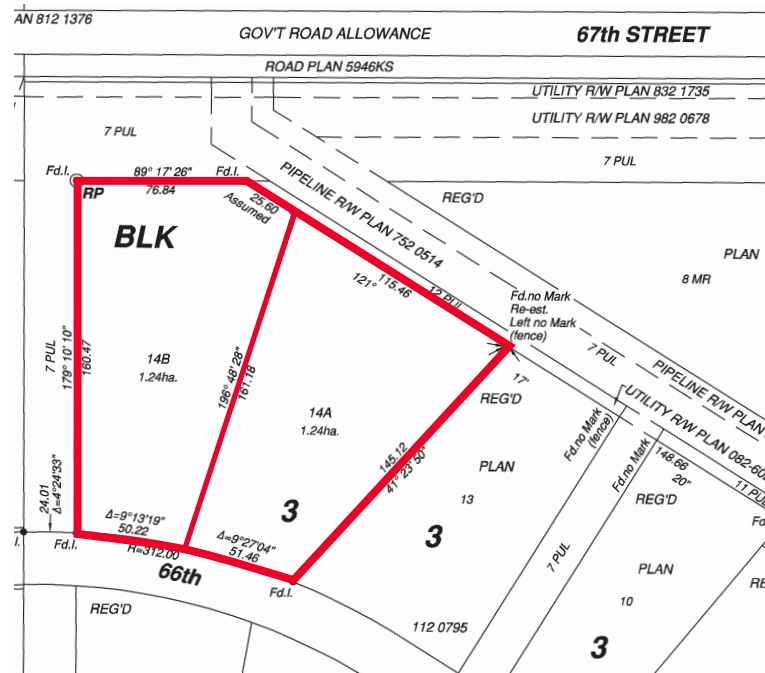
Legal Address:	Plan 142502, Block 3, Lot 14A & 14B
Zoning:	M2 - Heavy Industrial
Taxes:	\$9,598.21 (2019) per lot
Price:	\$250,000.00 per acre

Kurt Paull, SIOR
Partner
780 702 4258
kurt.paull@cwedm.com

Chris Sieben
Partner
780 720 0227
chris.sieben@cwedm.com

Will Harvie
Associate Partner
780 902 4278
will.harvie@cwedm.com

CUSHMAN & WAKEFIELD
Edmonton
Suite 2700, TD Tower
10088 - 102 Avenue
Edmonton, AB T5J 2Z1
www.cwedm.com



Cushman & Wakefield Edmonton is independently owned and operated / A Member of the Cushman & Wakefield Alliance. No warranty or representation, express or implied, is made to the accuracy or completeness of the information contained herein, and same is submitted subject to errors, omissions, change of price, rental or other conditions, withdrawal without notice, and to any special listing conditions imposed by the property owner(s). As applicable, we make no representation as to the condition of the property (or properties) in question. Oct. 24, 2024

Aerial



Kurt Paull, SIOR
Partner
780 702 4258
kurt.paull@cwedm.com

Chris Sieben
Partner
780 720 0227
chris.sieben@cwedm.com

Will Harvie
Associate Partner
780 902 4278
will.harvie@cwedm.com

CUSHMAN & WAKEFIELD
Edmonton
Suite 2700, TD Tower
10088 - 102 Avenue
Edmonton, AB T5J 2Z1
www.cwedm.com