

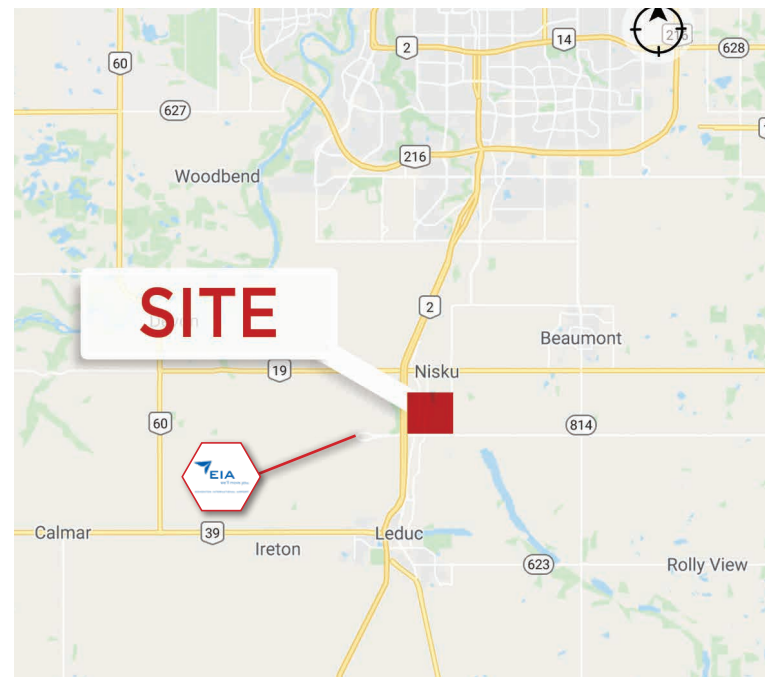
**REDUCED PRICE**



**Available Lots Ranging from  
1.52 Acres - 5.46 Acres**

### Property Highlights

- Sale Price: \$750,000 per Acre
- High exposure location to QEII Highway, Airport Road, and Sparrow Drive
- Commercial Service (CS) Zoning
- Primary uses include: automotive & equipment repair, sales and services, warehousing and storage, commercial retail and service, business office, convention facility, and personal and health care service.
- Discretionary uses include: auctioneering service, automotive/equipment body repair, commercial storage, recreational vehicle storage, indoor recreation, contractor service, and manufactured home, sales and service.



**Andy Horvath**  
Partner  
780 917 8338  
andy.horvath@cwedm.com

**Nicole Pozer**  
Team Coordinator  
780 702 9472  
nicole.pozer@cwedm.com

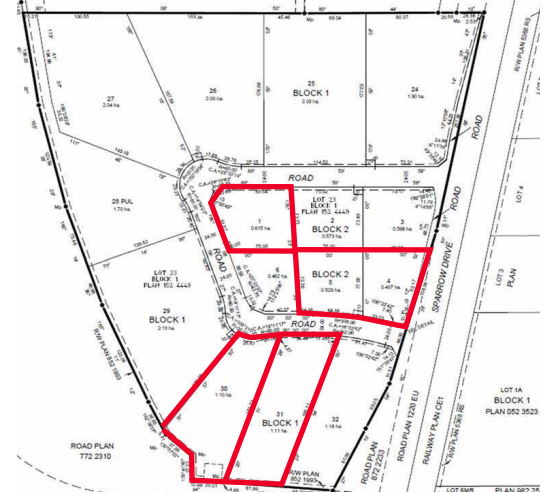
**Burke Smith**  
Partner  
780 917 8344  
burke.smith@cwedm.com

**CUSHMAN & WAKEFIELD**  
Edmonton  
Suite 2700, TD Tower  
10088 - 102 Avenue  
Edmonton, AB T5J 2Z1  
[www.cwedm.com](http://www.cwedm.com)

**Available Sizes**

Lot	Size (Acres)	Price	Status
Block 1, Lot 30	2.72 Acres	\$2,040,000	Available
Block 1, Lot 31	2.74 Acres	\$2,055,000	Available
Block 2, Lot 1	1.52 Acres	\$1,140,000	Available
<b>Block 2, Lot 2</b>	<b>1.42 Acres</b>	<b>\$1,278,000</b>	<b>SOLD</b>
Block 1, Lot 7	2.54 Acres	\$1,905,000	Available

**Site Plan**



**Aerial**



**Andy Horvath**  
Partner  
780 917 8338  
andy.horvath@cwedm.com

**Nicole Pozer**  
Team Coordinator  
780 702 9472  
nicole.pozer@cwedm.com

**Burke Smith**  
Partner  
780 917 8344  
burke.smith@cwedm.com

**CUSHMAN & WAKEFIELD**  
Edmonton  
Suite 2700, TD Tower  
10088 - 102 Avenue  
Edmonton, AB T5J 2Z1  
[www.cwedm.com](http://www.cwedm.com)

Cushman & Wakefield Edmonton is independently owned and operated / A Member of the Cushman & Wakefield Alliance. No warranty or representation, express or implied, is made to the accuracy or completeness of the information contained herein, and same is submitted subject to errors, omissions, change of price, rental or other conditions, withdrawal without notice, and to any special listing conditions imposed by the property owner(s). As applicable, we make no representation as to the condition of the property (or properties) in question. July 9, 2024