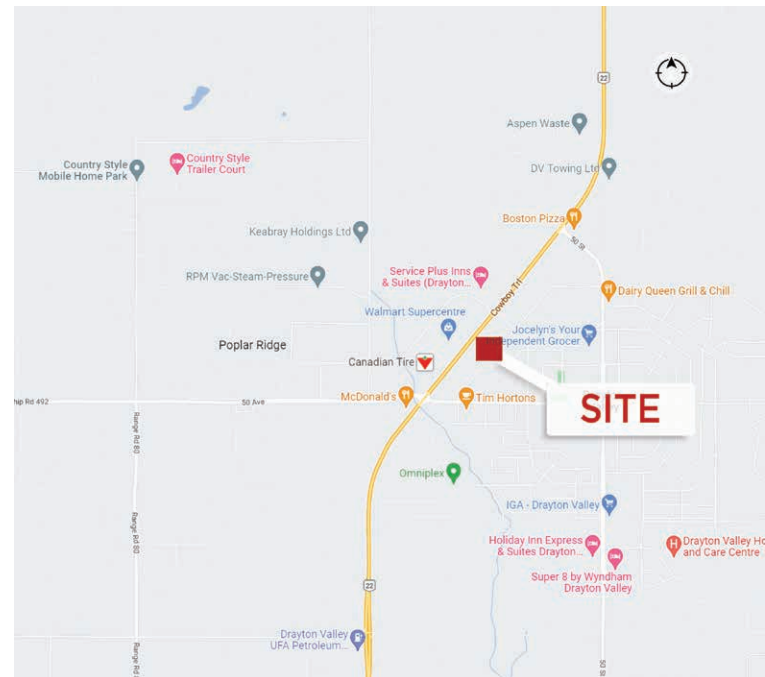




Former Schlumberger Facility

Property Highlights

- 5,800 SF warehouse with 5 grade doors
- Single wide office trailer
- Complete environmental report available
- On site storage tanks
- Corrosive storage sheds



Kurt Paull, SIOR
Partner
780 702 4258
kurt.paull@cwedm.com

Max McPeak
Associate
780 702 9082
max.mcpeak@cwedm.com

Will Harvie
Associate Partner
780 902 4278
will.harvie@cwedm.com

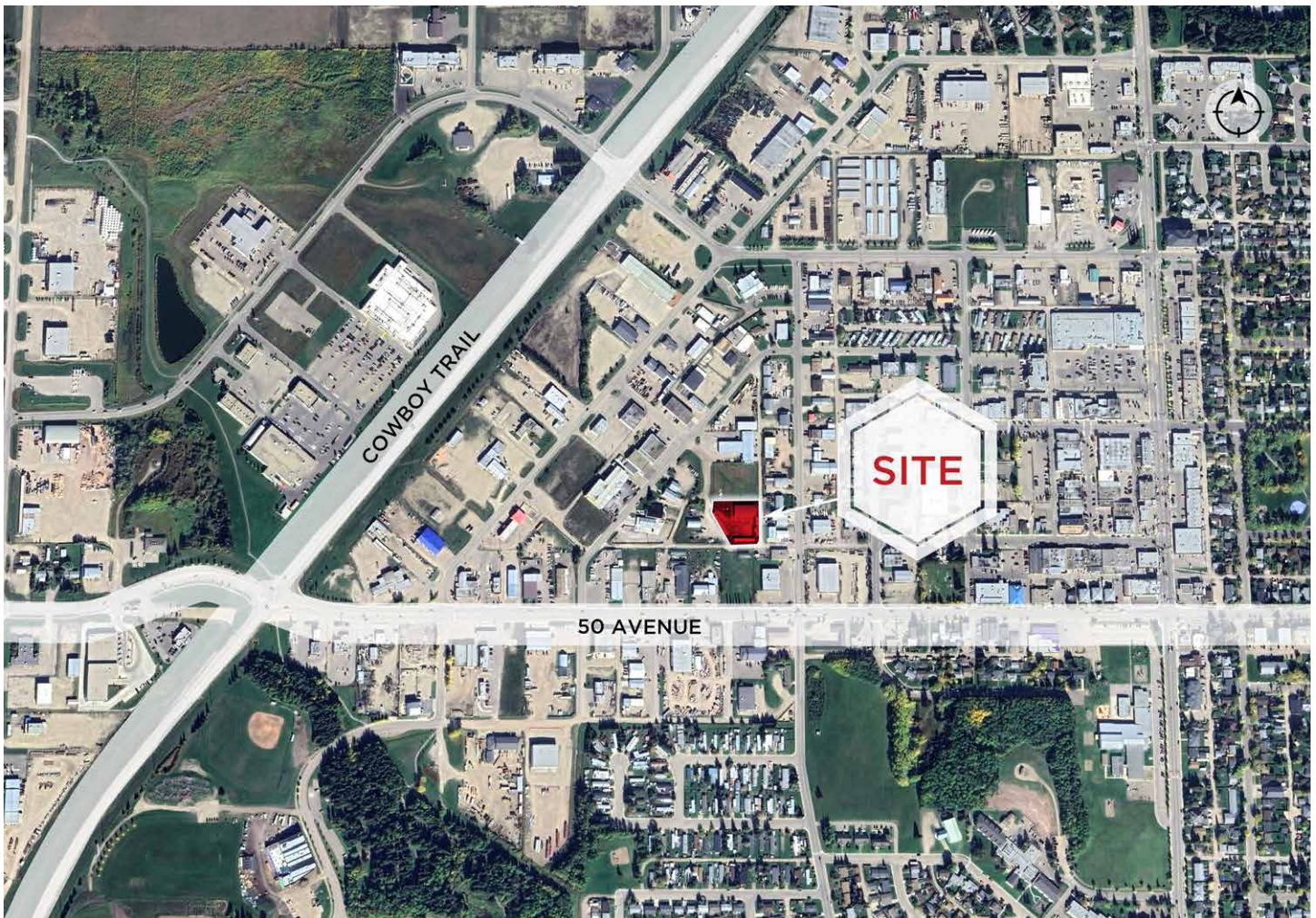
Nick Mytopher
Associate
587 597 5475
nick.mytopher@cwedm.com

CUSHMAN & WAKEFIELD
Edmonton
Suite 2700, TD Tower
10088 - 102 Avenue
Edmonton, AB T5J 2Z1
www.cwedm.com

Property Details

Municipal Address:	5902 55A Street, Drayton Valley, AB	Year Built:	2012
Legal Description:	Plan 3874NY, Block 7, Lot 25	Loading:	Grade 14' x 12'
Zoning:	C-GEN Commercial, General District	Power:	TBC
Available:	5,800 SF Warehouse 300 SF Office 6,100 SF Total	Ceiling Height:	14'
Site Size:	0.80 Acres	Lighting:	T5
Site Coverage Ratio:	17.50%	Heating:	Radiant Tube
		Sale Price:	Contact Agent

Aerial



Kurt Paull, SIOR
Partner
780 702 4258
kurt.paull@cwedm.com

Max McPeak
Associate
780 702 9082
max.mcpeak@cwedm.com

Will Harvie
Associate Partner
780 902 4278
will.harvie@cwedm.com

Nick Mytopher
Associate
587 597 5475
nick.mytopher@cwedm.com

CUSHMAN & WAKEFIELD
Edmonton
Suite 2700, TD Tower
10088 - 102 Avenue
Edmonton, AB T5J 2Z1
www.cwedm.com

Property Photos



Kurt Paull, SIOR
Partner
780 702 4258
kurt.paull@cwedm.com

Max McPeak
Associate
780 702 9082
max.mcpeak@cwedm.com

Will Harvie
Associate Partner
780 902 4278
will.harvie@cwedm.com

Nick Mytopher
Associate
587 597 5475
nick.mytopher@cwedm.com

CUSHMAN & WAKEFIELD
Edmonton
Suite 2700, TD Tower
10088 - 102 Avenue
Edmonton, AB T5J 2Z1
www.cwedm.com



Kurt Paull, SIOR
Partner
780 702 4258
kurt.paull@cwedm.com

Max McPeak
Associate
780 702 9082
max.mcpeak@cwedm.com

Will Harvie
Associate Partner
780 902 4278
will.harvie@cwedm.com

Nick Mytopher
Associate
587 597 5475
nick.mytopher@cwedm.com