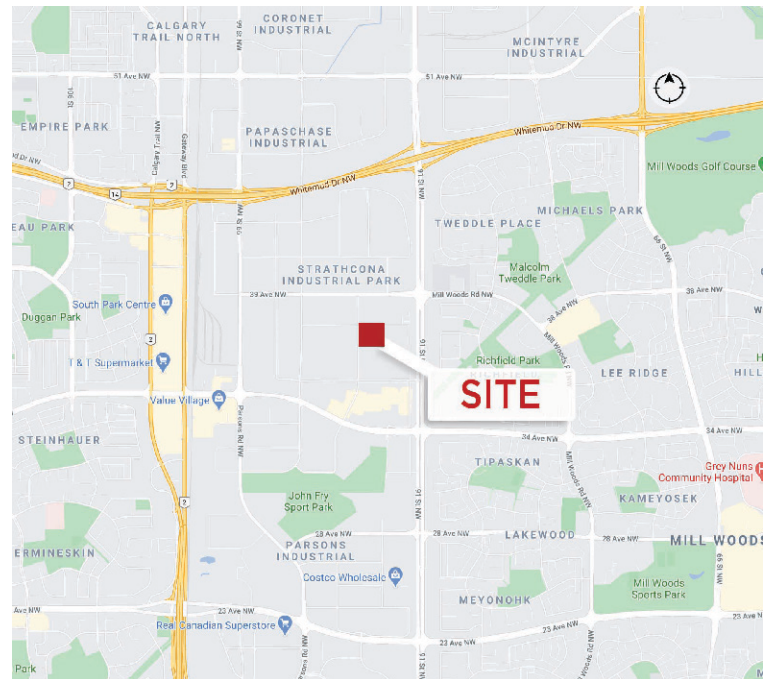




1.25 Acres BE - Business Employment

Property Highlights

- Excellent proximity to Whitemud Drive and Anthony Henday Drive
- Fully fenced, graveled and lit
- Site formerly used as CP Rail lay-down yard



Andy Horvath
Partner
780 917 8338
andy.horvath@cwedm.com

Nicole Pozer, Unlicensed
Team Coordinator
780 702 9472
nicole.pozer@cwedm.com

Burke Smith
Partner
780 917 8344
burke.smith@cwedm.com

CUSHMAN & WAKEFIELD
Edmonton
Suite 2700, TD Tower
10088 - 102 Avenue
Edmonton, AB T5J 2Z1
www.cwedm.com

Property Details

Municipal Address: 3603 93 Street NW, Edmonton

Legal Description: Lot, Block 14, Plan 984AY

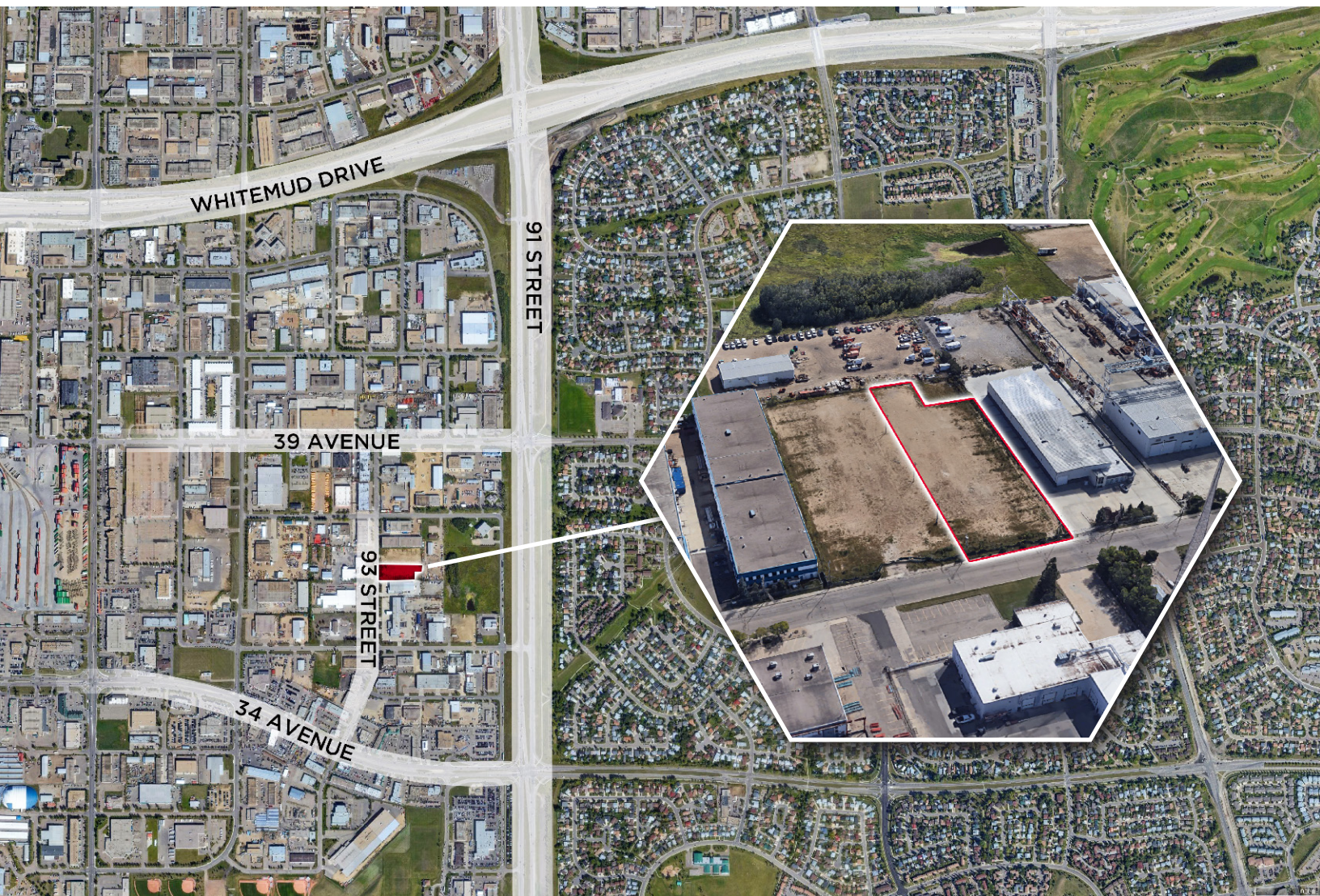
Zoning: BE - Business Employment

Site Size: 1.25 Acres

Lease Rate: \$1.00 per SF

Additional Rent: \$27,850.00 (2022 Estimate)

Aerial



Andy Horvath
Partner
780 917 8338
andy.horvath@cwedm.com

Nicole Pozer, Unlicensed
Team Coordinator
780 702 9472
nicole.pozer@cwedm.com

Burke Smith
Partner
780 917 8344
burke.smith@cwedm.com

CUSHMAN & WAKEFIELD
Edmonton
Suite 2700, TD Tower
10088 - 102 Avenue
Edmonton, AB T5J 2Z1
www.cwedm.com