

# ONE TWELVE CAMPUS

**10130 112 Street,  
Edmonton, AB**

**Will Harvie**  
Associate Partner  
780 902 4278  
will.harvie@cwedm.com

**Nick Mytopher**  
Associate  
587 597 5475  
nick.mytopher@cwedm.com

**Kurt Paull, SIOR**  
Partner  
780 702 4258  
kurt.paull@cwedm.com

**Max McPeak**  
Associate  
780 702 9082  
max.mcpeak@cwedm.com

**Cushman & Wakefield Edmonton**  
Suite 2700, TD Tower  
10088 102 Avenue  
Edmonton, AB T5J 2Z1  
cwedm.com

Cushman & Wakefield Edmonton is independently owned and operated / A Member of the Cushman & Wakefield Alliance. No warranty or representation express or implied is made to the accuracy or completeness of the information contained herein, and same is submitted subject to errors, omissions, change of price, rental or other conditions, withdrawal without notice, and to any special listing conditions imposed by the property owner(s). As applicable, we make no representation as to the condition of the property for properties in question. February 3, 2025



# HIGHLIGHTS

Located close to Jasper Avenue, this two-tower building is owned and managed by Rohit Group of Companies and has the benefit of being close to many residential buildings while also being within walking distance to the Government District, Downtown and the River Valley along with many close by restaurants and amenities. The building offers secure parking, efficient floorplans, patio's and nearby green spaces with the ability to accommodate a variety of uses.



5 Min drive to the River Valley



6 Min drive to Victoria Park



5 Min drive to Rogers Place



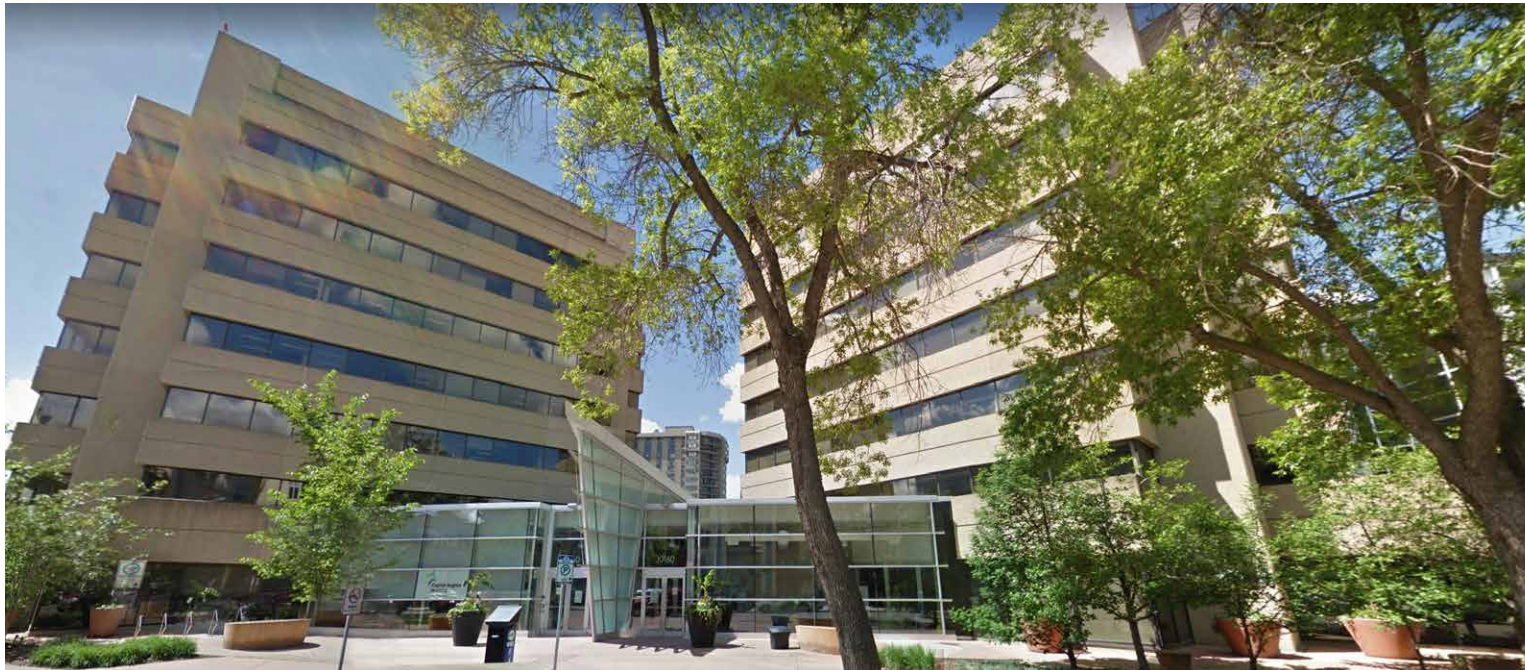
Royal Glenora Club  
7 Min drive / 19 Min walk



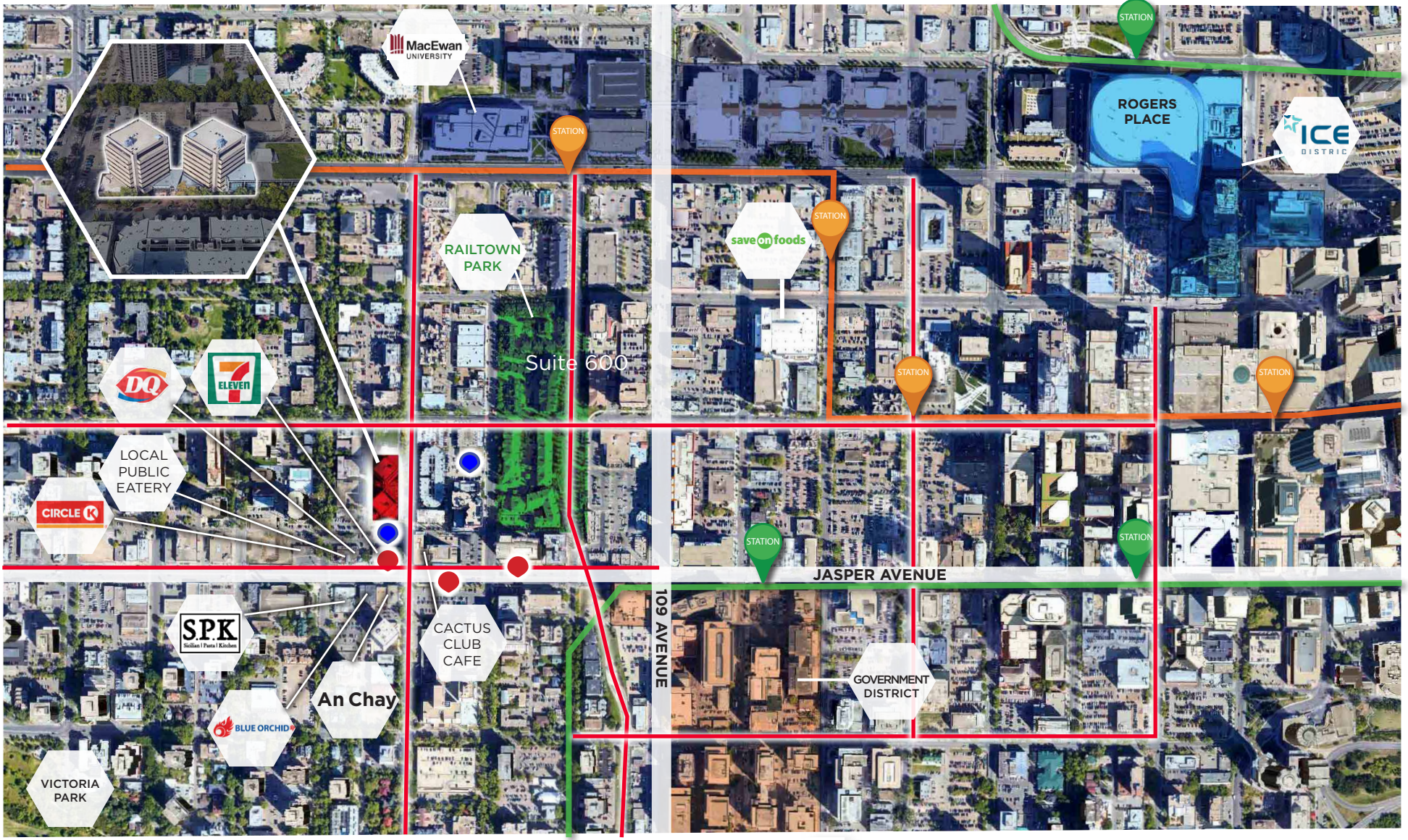
5 Min drive to  
Downtown Core



9 Min walk to Corona  
LRT Station







	LRT Station		Future Valley Line LRT Station
	Current LRT Line		Future LRT Line
	ETS Transit Stop		BIKE ROUTE
	Parking		

# ONE TWELVE CAMPUS



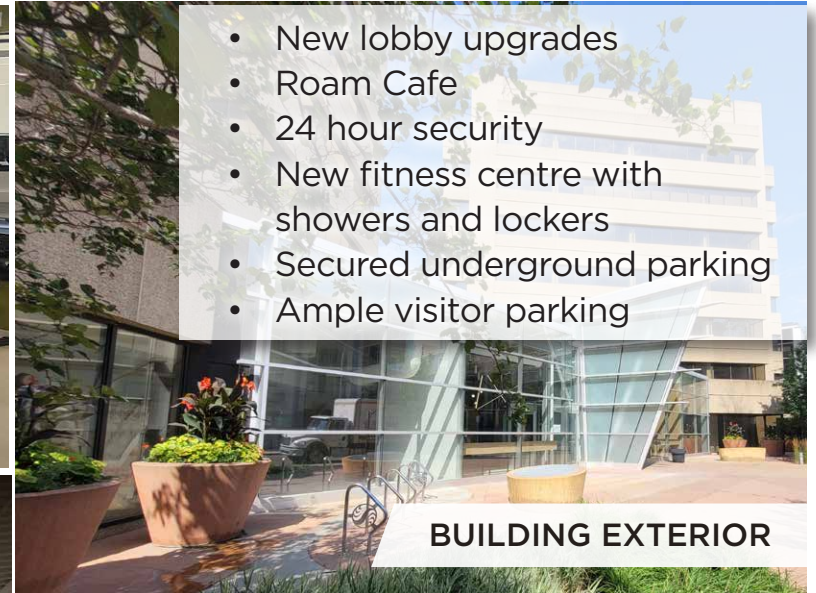
# BUILDING FEATURES

**Rohit**<sup>TM</sup>  
RENTAL LIVING | Bold Goes Further

**CUSHMAN &  
WAKEFIELD**  
Edmonton



TENANT FITNESS CENTRE

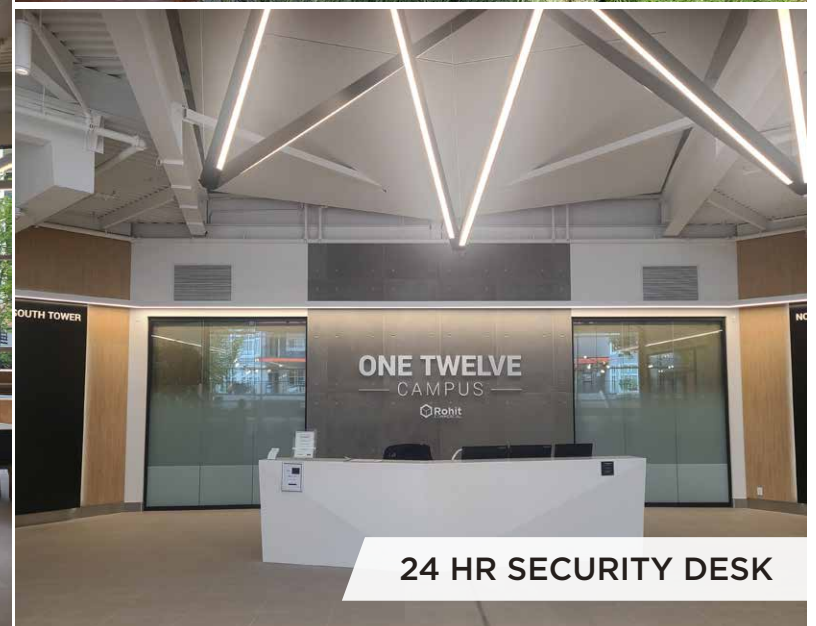


- New lobby upgrades
- Roam Cafe
- 24 hour security
- New fitness centre with showers and lockers
- Secured underground parking
- Ample visitor parking

BUILDING EXTERIOR



UPGRADED LOBBY AREA & CAFE



24 HR SECURITY DESK



LIVE



WORK



PLAY





# ONE TWELVE CAMPUS

## Property Details

### Main Floor

Suite 1	Leased
Suite 2	Leased
Suite 3	±1,796 SF (Retail)

### South Tower

Suite 200	Leased
Suite 300	Leased
Suite 400	±9,282 SF
Suite 500	Leased
Suite 600	Leased
Suite 700	Leased
Suite 701	±2,399 SF

### North Tower (Leased) Covenant Health

Demising options available

**Parking:** 1.7/1,000 SF  
Combination of surface and underground parking available at market rates

**Base Rent:** Starting at \$16.00 per SF

**Additional Rent:** \$14.84 per SF (2025 estimate)

**Management Fee:** 5%

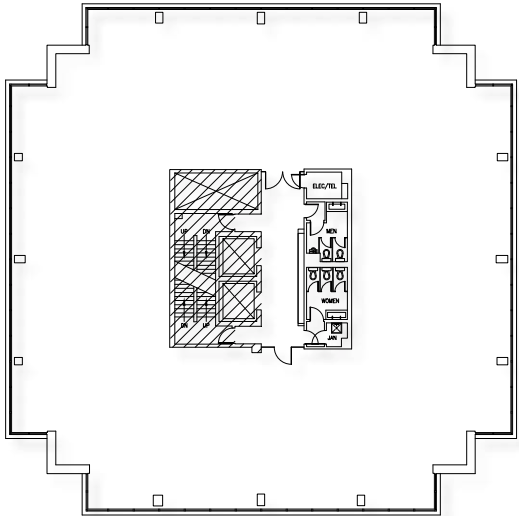


# NORTH & SOUTH TOWERS

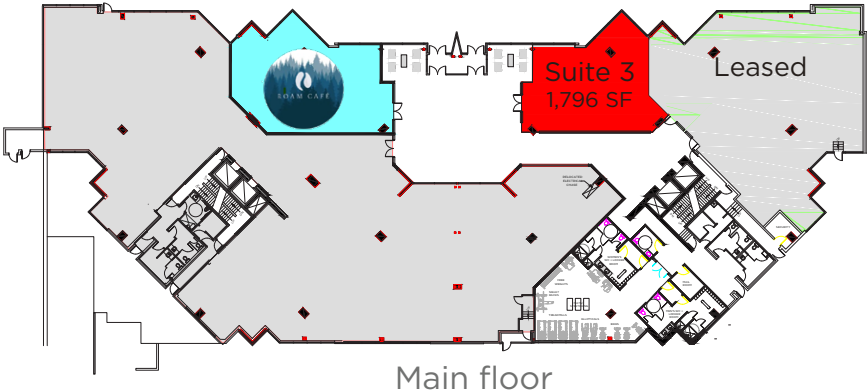


- For Lease
- Covenant Health

**EMCN**  
Edmonton Mennonite  
Centre for Newcomers



Floor plan for floor 4



Main floor



**Cushman & Wakefield Edmonton**

Suite 2700, TD Tower  
10088 - 102 Avenue  
Edmonton, AB T5Y 2Z1  
[www.cwedm.com](http://www.cwedm.com)

**Will Harvie**

Associate Partner  
780 902 4278  
[will.harvie@cwedm.com](mailto:will.harvie@cwedm.com)

**Nick Mytopher**

Associate  
587 597 5475  
[nick.mytopher@cwedm.com](mailto:nick.mytopher@cwedm.com)

**Kurt Paull, SIOR**

Partner  
780 702 4258  
[kurt.paull@cwedm.com](mailto:kurt.paull@cwedm.com)

**Max McPeak**

Associate  
780 702 9082  
[max.mcpeak@cwedm.com](mailto:max.mcpeak@cwedm.com)

Cushman & Wakefield Edmonton is independently owned and operated / A Member of the Cushman & Wakefield Alliance. No warranty or representation, expressed or implied, is made as to the accuracy of the information contained herein, and same is submitted subject to errors, omissions, change of price, rental or other conditions, withdrawal without notice, and to any specific listing condition, imposed by our principals. As applicable, we make no representation as to the condition of the property (or properties) in question. February 3, 2025