

ONE TWELVE CAMPUS

**10130 112 Street,
Edmonton, AB**

Will Harvie
Associate Partner
780 902 4278
will.harvie@cwedm.com

Nick Mytopher
Associate
587 597 5475
nick.mytopher@cwedm.com

Kurt Paull, SIOR
Partner
780 702 4258
kurt.paull@cwedm.com

Max McPeak
Associate
780 702 9082
max.mcpeak@cwedm.com

Cushman & Wakefield Edmonton
Suite 2700, TD Tower
10088 102 Avenue
Edmonton, AB T5J 2Z1
cwedm.com

Cushman & Wakefield Edmonton is independently owned and operated / A Member of the Cushman & Wakefield Alliance. No warranty or representation express or implied is made to the accuracy or completeness of the information contained herein, and same is submitted subject to errors, omissions, change of price, rental or other conditions, withdrawal without notice, and to any special listing conditions imposed by the property owner(s). As applicable, we make no representation as to the condition of the property for properties in question. Aug. 31, 2023

HIGHLIGHTS

Located close to Jasper Avenue, this two-tower building is owned and managed by Rohit Group of Companies and has the benefit of being close to many residential buildings while also being within walking distance to the Government District, Downtown and the River Valley along with many close by restaurants and amenities. The building offers secure parking, efficient floorplans, patio's and nearby green spaces with the ability to accommodate a variety of uses.



5 Min drive to the River Valley



6 Min drive to Victoria Park



5 Min drive to Rogers Place



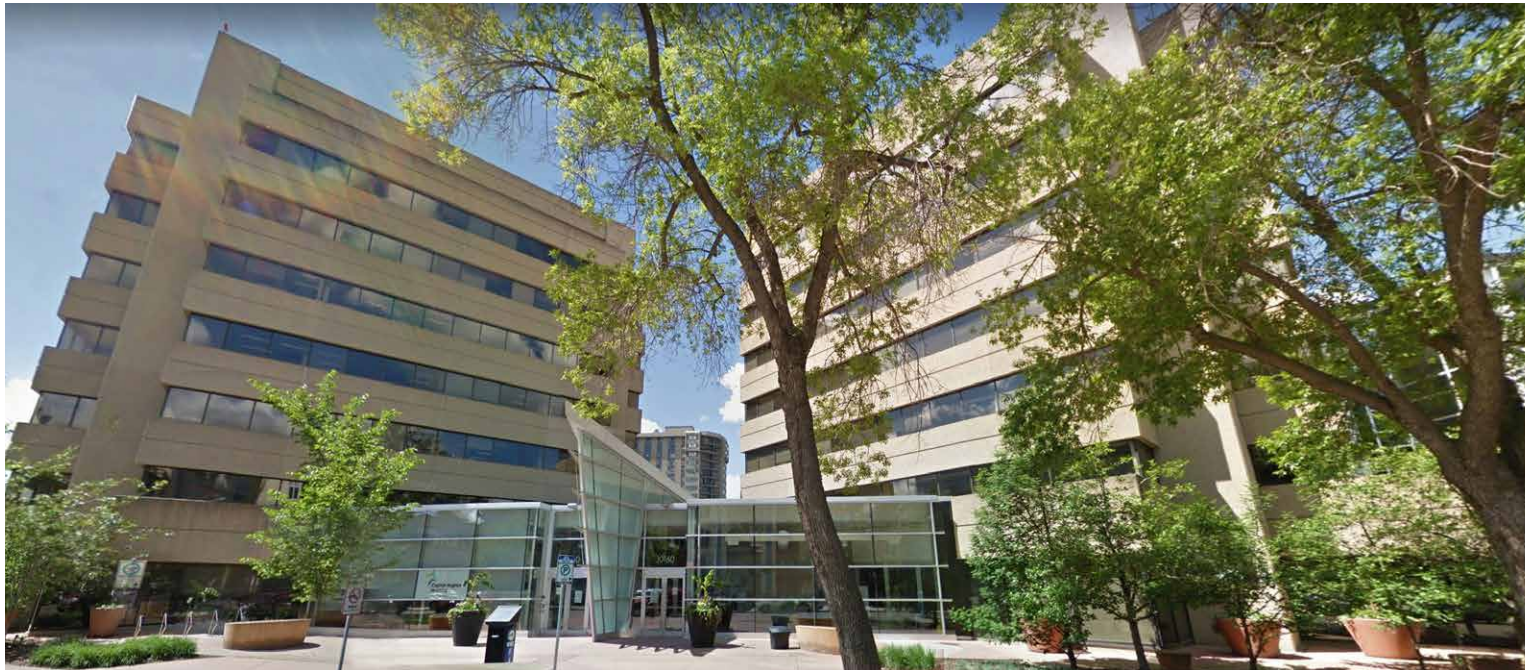
Royal Glenora Club
7 Min drive / 19 Min walk

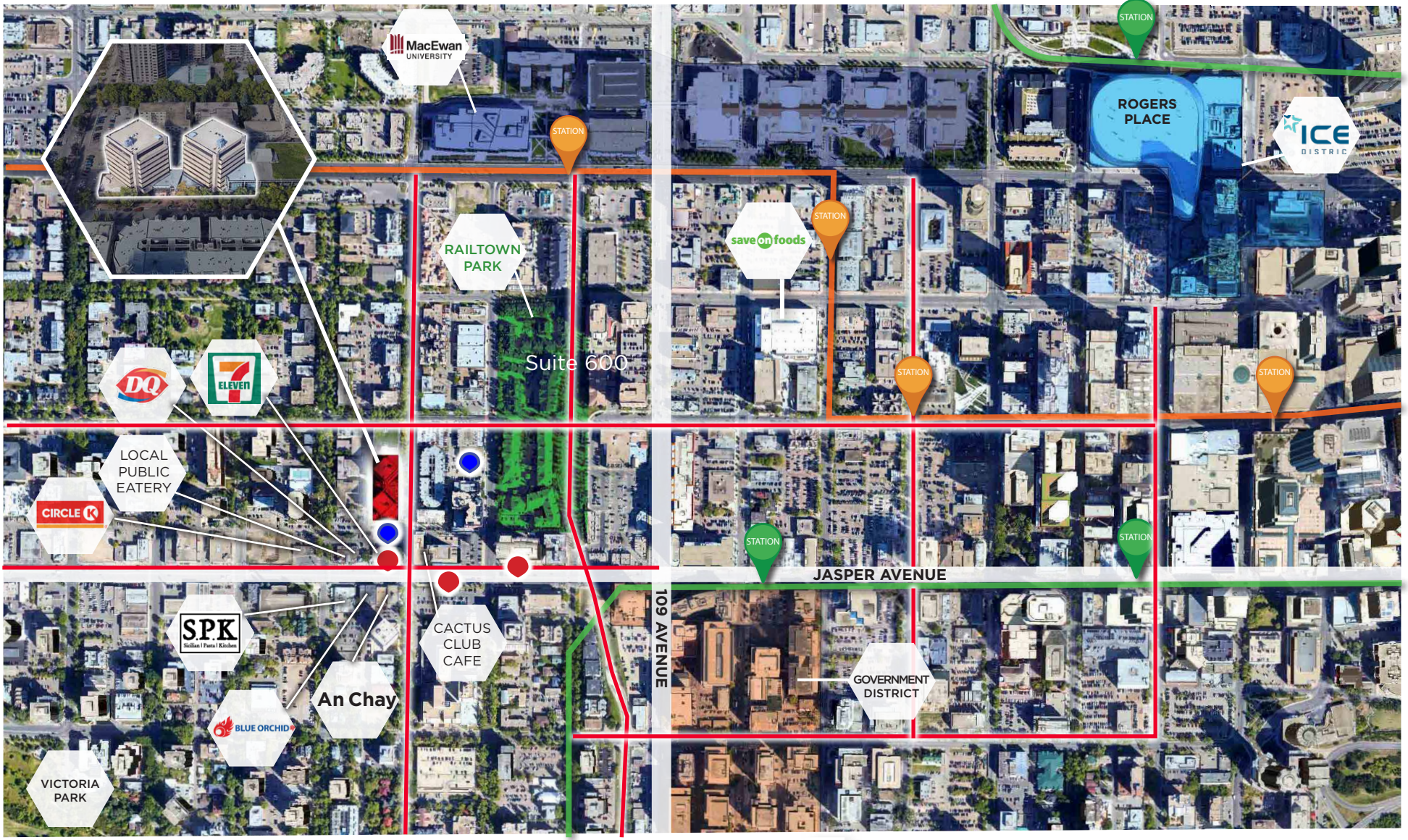


5 Min drive to
Downtown Core



9 Min walk to Corona
LRT Station





	LRT Station		Future Valley Line LRT Station
	Current LRT Line		Future LRT Line
	ETS Transit Stop		BIKE ROUTE
	Parking		

ONE TWELVE CAMPUS

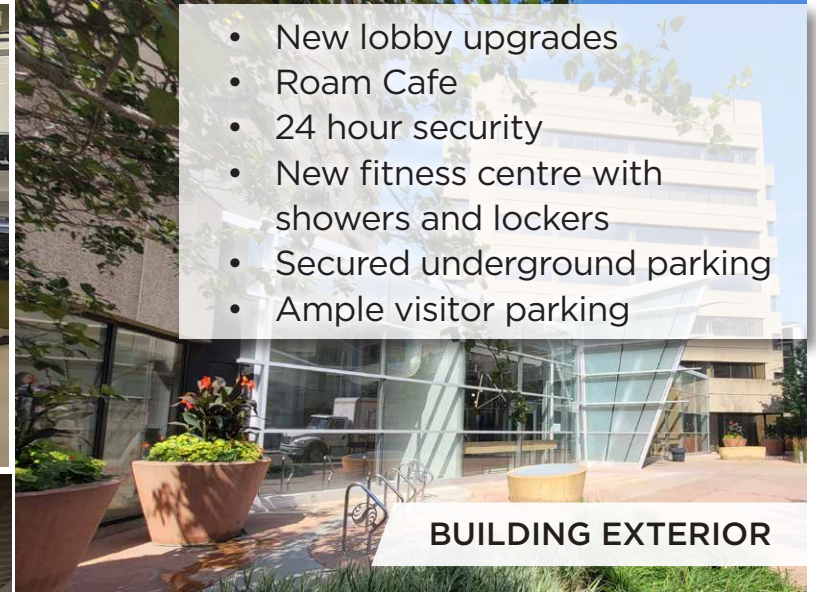
BUILDING FEATURES

RohitTM
RENTAL LIVING | Bold Goes Further

**CUSHMAN &
WAKEFIELD**
Edmonton



TENANT FITNESS CENTRE

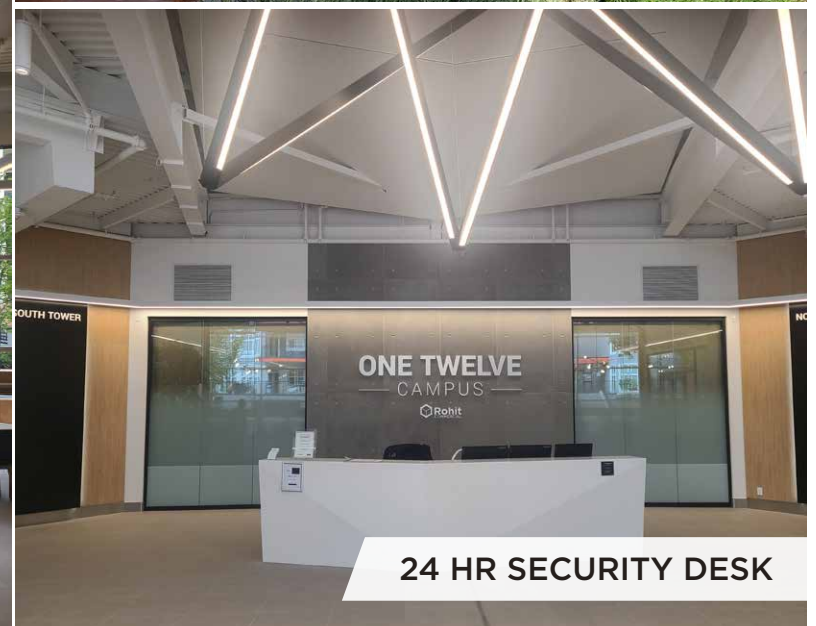


- New lobby upgrades
- Roam Cafe
- 24 hour security
- New fitness centre with showers and lockers
- Secured underground parking
- Ample visitor parking

BUILDING EXTERIOR



UPGRADED LOBBY AREA & CAFE



24 HR SECURITY DESK

LIVE



WORK



PLAY



ONE TWELVE CAMPUS

Property Details

Main Floor

Suite 1	Leased
Suite 2	Leased
Suite 3	±1,796 SF (Retail)

South Tower

Suite 200	Leased
Suite 300	Leased
Suite 400	±9,282 SF
Suite 500	Leased
Suite 600	Leased
Suite 700	Leased
Suite 701	±2,399 SF

North Tower (Leased) Covenant Health

Demising options available

Parking: 1.7/1,000 SF

Combination of surface and underground parking available at market rates

Base Rent: Starting at \$16.00 per SF

Additional Rent: \$14.21 per SF (2024 estimate)

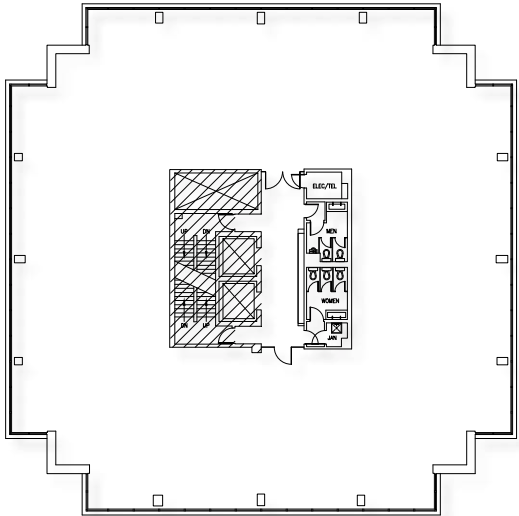
Management Fee: 5%

NORTH & SOUTH TOWERS

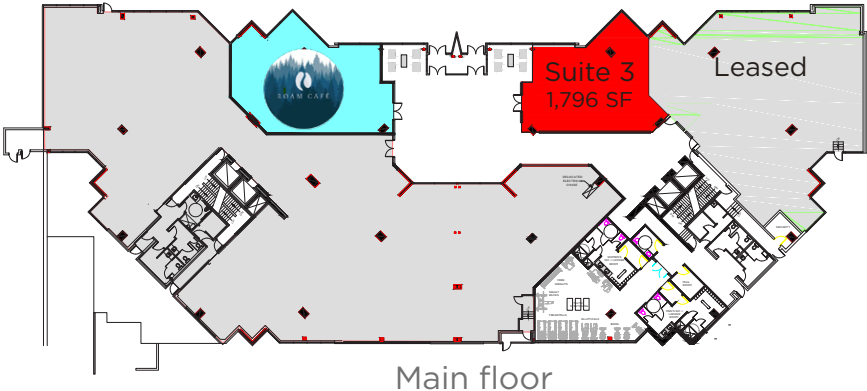


- For Lease
- Covenant Health

EMCN
Edmonton Mennonite
Centre for Newcomers



Floor plan for floor 4



Main floor



Cushman & Wakefield Edmonton

Suite 2700, TD Tower
10088 - 102 Avenue
Edmonton, AB T5Y 2Z1
www.cwedm.com

Will Harvie

Associate Partner
780 902 4278
will.harvie@cwedm.com

Nick Mytopher

Associate
587 597 5475
nick.mytopher@cwedm.com

Kurt Paull, SIOR

Partner
780 702 4258
kurt.paull@cwedm.com

Max McPeak

Associate
780 702 9082
max.mcpeak@cwedm.com

Cushman & Wakefield Edmonton is independently owned and operated / A Member of the Cushman & Wakefield Alliance. No warranty or representation, expressed or implied, is made as to the accuracy of the information contained herein, and same is submitted subject to errors, omissions, change of price, rental or other conditions, withdrawal without notice, and to any specific listing condition, imposed by our principals. As applicable, we make no representation as to the condition of the property (or properties) in question. August 31, 2023