

FOR LEASE

# MACLEAN BLOCK

10112 107 Street,  
Edmonton, AB

**SECOND FLOOR: 4,554 SF FULLY FIXTURED SPACE (CAN BE SUB-DIVIDED TO 3,000 SF & 1,550 SF)**

## PROPERTY HIGHLIGHTS

- Character building with an open floor concept
- Second floor space accessible by elevator through common area lobby
- Parking stalls available at an additional cost
- Hourly street parking in front of Premises
- Walking distance to the Corona LRT station
- In the heart of downtown right off Jasper Avenue

**Dustin Bateyko**  
Partner  
780 702 4257  
dustin.bateyko@cwedm.com

**CUSHMAN & WAKEFIELD**  
Edmonton  
Suite 2700, TD Tower  
10088 - 102 Avenue  
Edmonton, AB T5J 2Z1  
[www.cwedm.com](http://www.cwedm.com)

# PROPERTY DETAILS

**Lease Area:** Second Floor - 4,554 SF  
(Can be sub-divided to 3,000 SF & 1,550 SF)

**Operating Costs:** \$16.72 Per SF  
& Janitorial - Second Floor

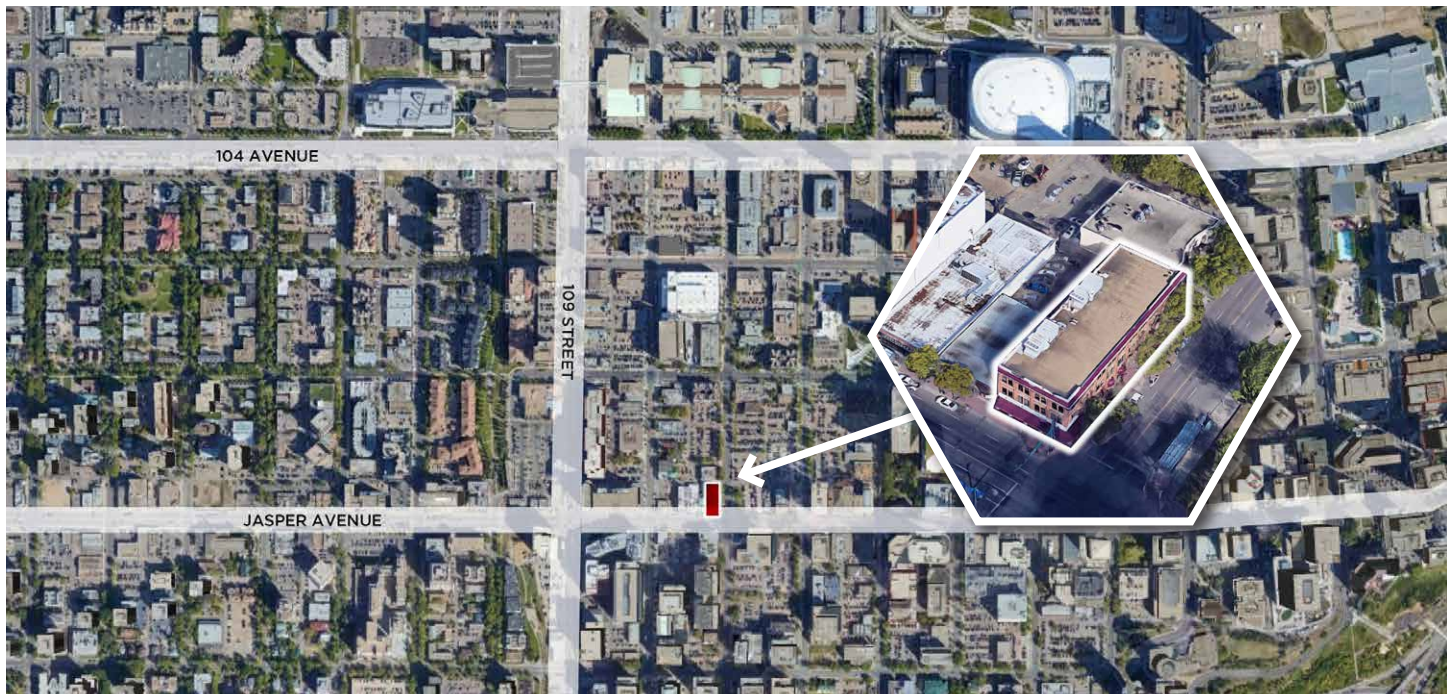
**Lease Rate:** Market

**Parking:** 15 stalls at \$180 per month per stall

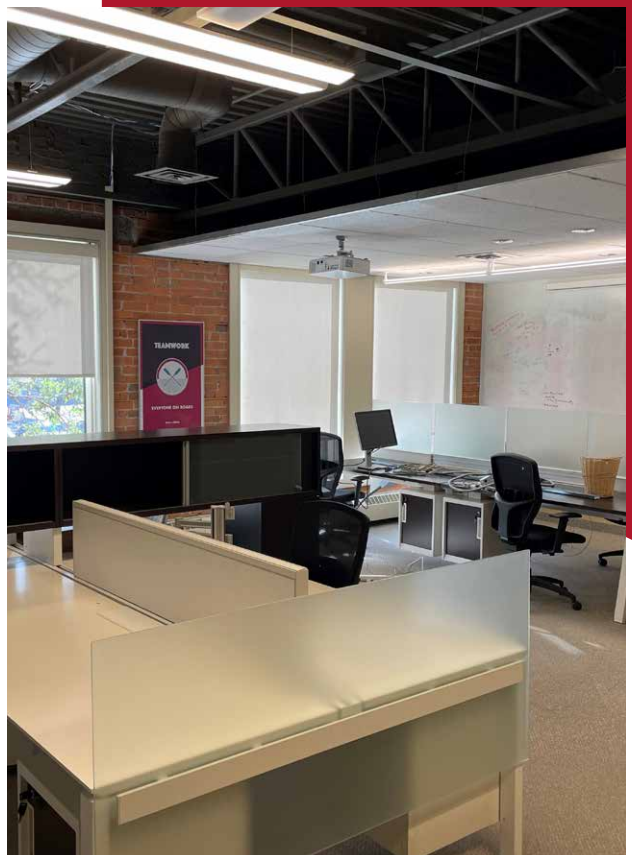
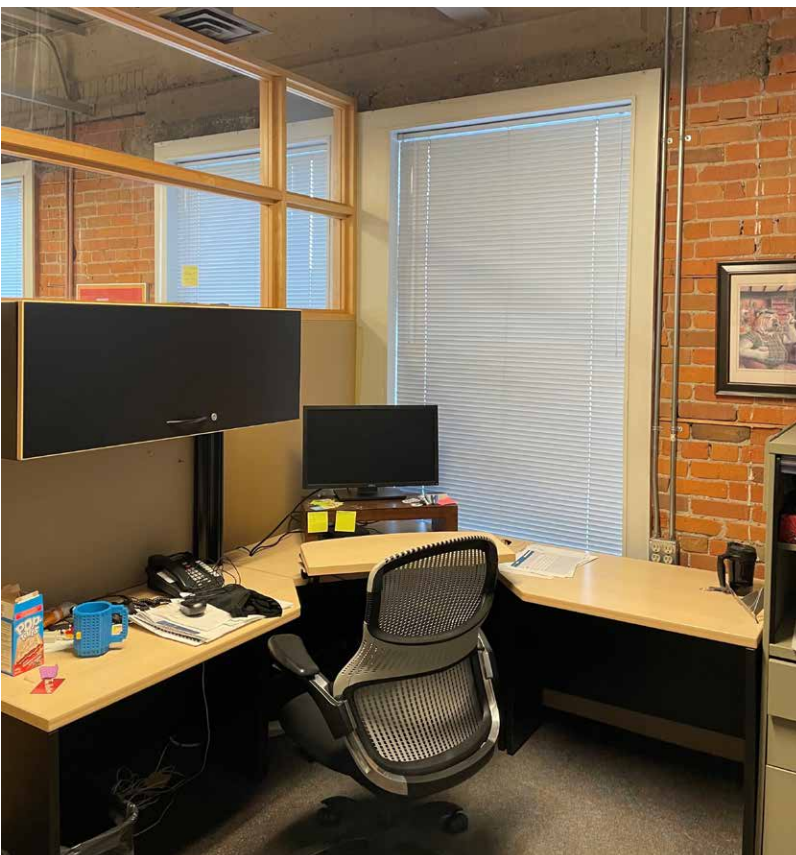
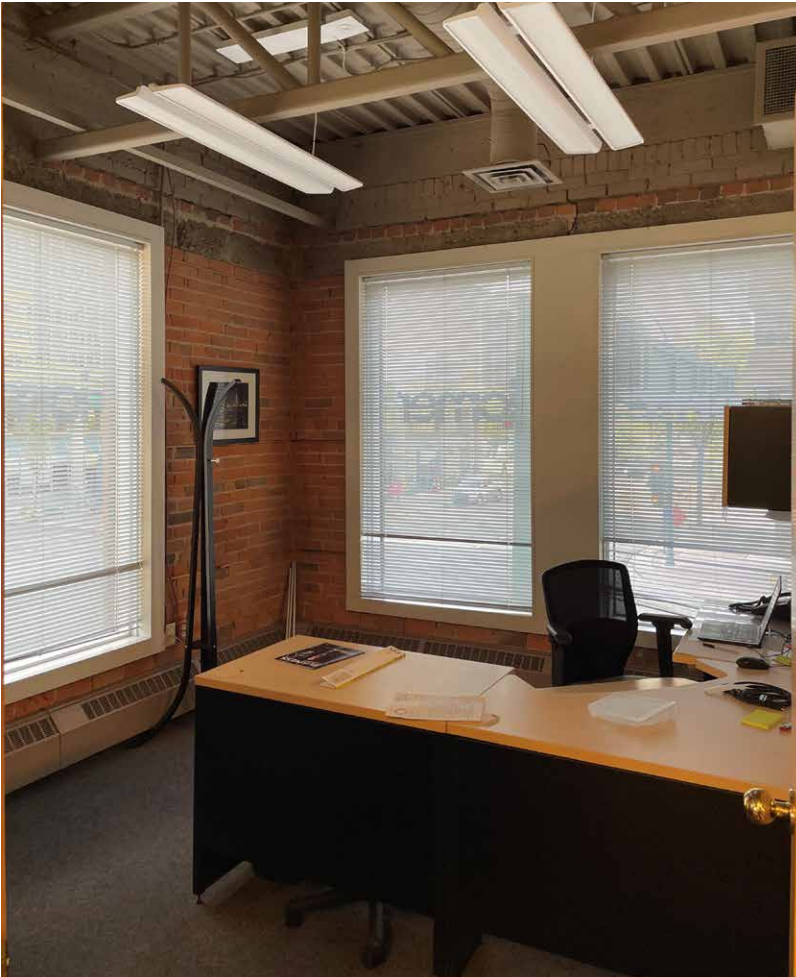
## EXTERIOR PHOTOS



## AERIAL



# INTERIOR PHOTOS





**CUSHMAN &  
WAKEFIELD**  
Edmonton

**Dustin Bateyko**  
Partner  
780 702 4257  
[dustin.bateyko@cwedm.co](mailto:dustin.bateyko@cwedm.co)